

APPENDIX C

Noise Modeling Technical Report

Construction and demolition noise were modeled for each type of activity that would occur in each phase of construction and demolition for the Proposed Project. The Authority provided this data as Phases B0 through B9. The noise modeling used the Authority's numbering for consistency with their data. However, for the public's ease in reviewing the Written Re-evaluation, the construction and demolition phases were renumbered to be Phases 1-10 in the main document. **Table C-1** below shows the construction activity associated with the Proposed Project and identifies both the Authority's and corresponding Written Re-evaluation's construction and demolition phase numbering. The data presented in this appendix presents the noise modeling using the Authority's phase numbering.

Proposed Replacement Passenger Terminal Project Draft Written Re-evaluation

Construction Noise Analysis Technical Report

HMMH Project Number 23-0229A
December 21, 2023

Prepared for:

Burbank-Glendale-Pasadena Airport Authority

Engineering and Planning
2800 N. Clybourn
Burbank, California 91505

Prepared by:

Scott N. Noel, AICP INCE
Mariano Sarrate
Claire A. Dossey



HMMH

300 S. Harbor Boulevard, Suite 516
Anaheim, CA 92805

Contents

1. Summary	1
2. Noise	2
3. Regulatory Environment	6
4. Methodology	7
5. Existing Conditions.....	10
6. Impact Analysis.....	12

Figures

Figure 1. Sound Levels	3
Figure 2. Decibel Addition	4
Figure 3. Proposed Project Preliminary Construction Schedule.....	9
Figure 4. Noise Measurement Locations	11
Figure 5. Construction Noise Analysis Receivers.....	13
Figure 6. Construction Phase B0 dBA Leq Noise Contours.....	16
Figure 7. Construction Phase B1 dBA Leq Noise Contours	17
Figure 8. Construction Phase B2 dBA Leq Noise Contours	18
Figure 9. Construction Phase B3 dBA Leq Noise Contours	19
Figure 10. Construction Phase B4 dBA Leq Noise Contours	20
Figure 11. Construction Phase B5 dBA Leq Noise Contours	21
Figure 12. Construction Phase B6 dBA Leq Noise Contours	22
Figure 13. Construction Phase B9 dBA Leq Noise Contours	23
Figure 14. Demolition Phase B7 dBA Leq Noise Contours	25



Tables

Table 1. Common Sounds on the A-Weighted Decibel Scale	2
Table 2. Measurement Summary	10
Table 3. Construction and Demolition Noise dBA Leq by Construction and Demolition Phase Number	14
Table 4. Predicted Noise plus Ambient Sound Level by Construction and Demolition Phase Number.....	15
Table 5. Predicted Increase in Noise by Construction and Demolition Phase Number.....	15
Table 6. Demolition Noise dBA Leq	24

Appendices

ATTACHMENT A: Construction Equipment Source Data	26
ATTACHMENT B: Measurement Data.....	52

1. Summary

To support the ongoing Federal Aviation Administration's (FAA's) Environmental Impact Statement (EIS) effort, this technical report has been prepared to assess construction noise for the Proposed Project, implementing the methodologies included in the latest version of the Federal Highway Administration (FHWA) Roadway Construction Noise Model (RCNM). The analysis conservatively assumes that all construction equipment anticipated for the current understanding of the Proposed Project would operate simultaneously for each construction phase. Where phases overlap in time, the analysis assumes both phases and all their associated equipment are operating simultaneously. In this way the analysis provides a conservative assessment of potential impacts.



2. Noise

2.1 Noise Descriptors

Noise levels are measured using a variety of scientific metrics. As a result of extensive research into the characteristics of noise and human response to that noise, standard noise descriptors have been developed for noise exposure analyses. The descriptors used in this construction noise analysis are described below.

A-Weighted Sound Pressure Level (dBA): The decibel (dB) is a unit used to describe sound pressure level. When expressed in dBA, the sound has been filtered to reduce the effect of very low and very high frequency sounds, much as the human ear filters sound frequencies. Without this filtering calculated and measured sound levels would include events that the human ear cannot hear (e.g., dog whistles and low frequency sounds, such as the groaning sounds emanating from large buildings with changes in temperature and wind). With A-weighting, calculations and sound monitoring equipment approximate the sensitivity of the human ear to sounds of different frequencies.

Some common sounds on the dBA scale are listed in Table 1. As shown, the relative perceived loudness of a sound doubles for each increase of 10 dBA, and a 10 dBA change in the sound level corresponds to a factor of 10 increase or decrease in relative sound energy. Figure 1 provides common sound levels and their typical levels.



Table 1. Common Sounds on the A-Weighted Decibel Scale

Sound	Sound level	Relative loudness (approximate)	Sound level
Rock music, with amplifier	120	64	1,000,000
Thunder, snowmobile (operator)	110	32	100,000
Boiler shop, power mower	100	16	10,000
Orchestral crescendo at 25 feet, noisy kitchen	90	8	1,000
Busy street	80	4	100
Interior of department store	70	2	10
Ordinary conversation, 3 feet away	60	1	1
Quiet automobiles at low speed	50	½	.1
Average office	40	¼	.01
City residence	30	1/8	.001
Quiet country residence	20	1/16	.0001
Rustle of leaves	10	1/32	.00001
Threshold of hearing	0	1/64	.000001

Source: U.S. Department of Housing and Urban Development. Aircraft Noise Impact--Planning Guidelines for Local Agencies, Figure 2-2. 1972.

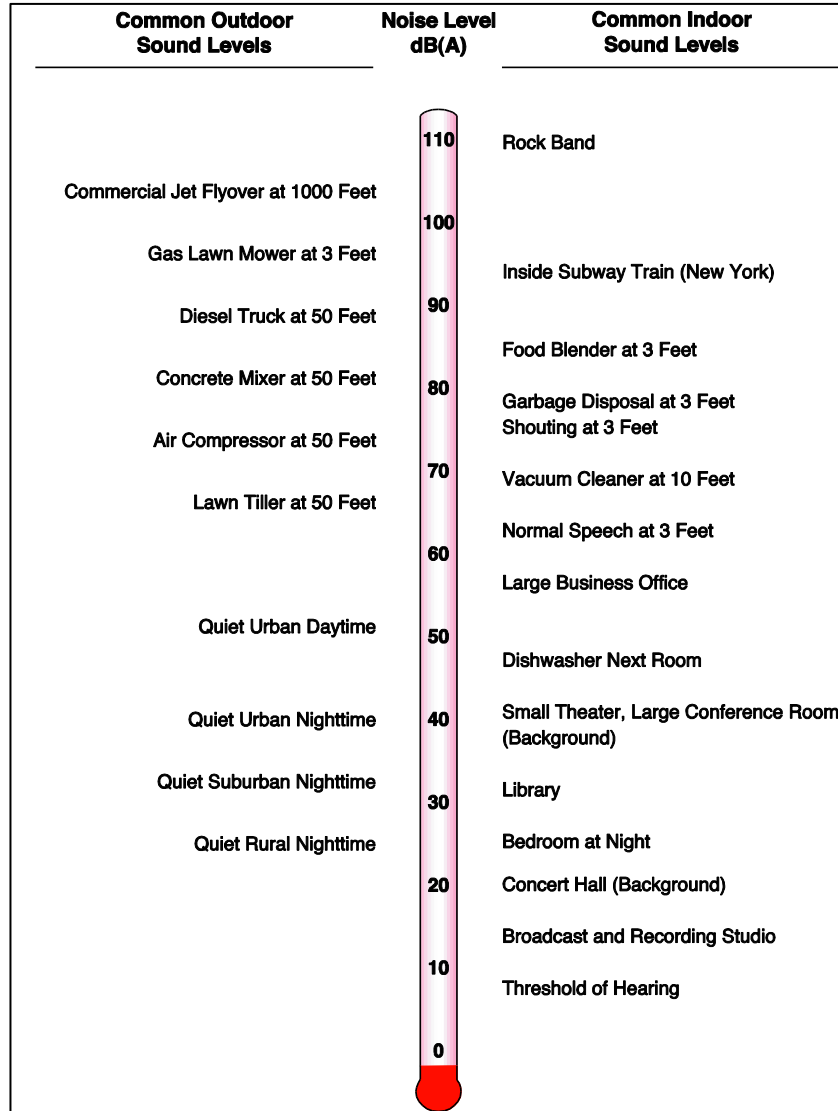


Figure 1. Sound Levels

In general, humans find a change in sound level of 3 dB is just noticeable, a change of 5 dBA is clearly noticeable, and a change of 10 dB is perceived as a doubling or halving sound level (i.e., an increase of 10 dB is perceived as being twice as loud and a decrease of 10 dB is perceived as being half as loud). Because of the logarithmic scale of the decibel unit, sound levels generally cannot be added or subtracted arithmetically. Two sounds of equal physical intensity will result in the sound level increasing by 3 dB, regardless of the initial sound level (see Figure 2). For example, 60 dB plus 60 dB equals 63 dB, 80 dB plus 80 dB equals 83 dB. However, where ambient noise levels are high in comparison to a new noise source, there will be a small change in noise levels. For example, when a 70 dB ambient noise levels are combined with a 60 dB noise source the resulting noise level equals 70.4 dB.

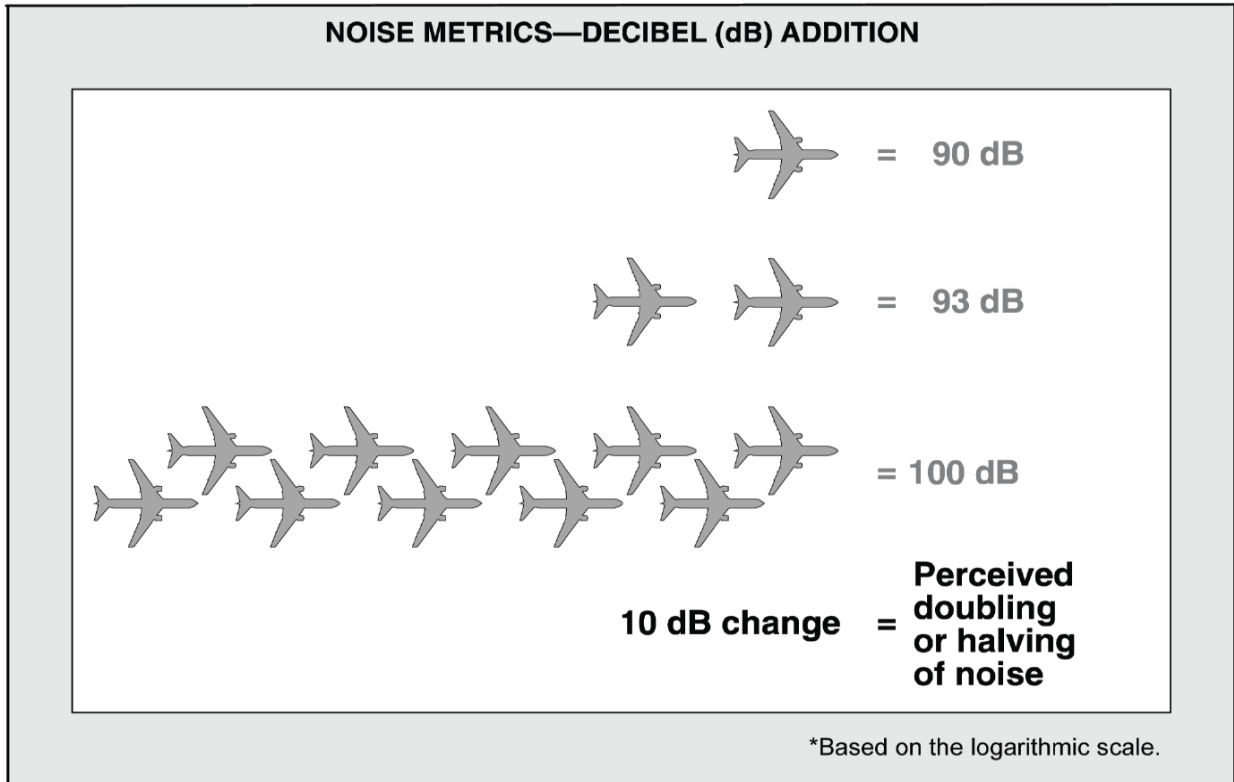


Figure 2. Decibel Addition

Maximum Noise Level (L_{max}): L_{max} is the maximum or peak sound level during a noise event. The metric accounts only for the instantaneous peak intensity of the sound and not for the duration of the event. As a vehicle or aircraft passes by an observer, the sound level increases to a maximum level and then decreases. Some sound level meters measure and record the maximum or L_{max} level.

Equivalent Continuous Noise Level (L_{eq}): L_{eq} is the sound level, expressed in dBA, of a steady sound that has the same A-weighted sound energy as the time-varying sound over the averaging period. L_{eq} is the average sound level for a specified time period (e.g., 24 hours, 8 hours, 1 hour, etc.). L_{eq} is calculated by integrating the sound energy from all noise events over a given time period and applying a factor for the number of events. L_{eq} can be expressed for any time interval; for example, the L_{eq} representing an averaged level over an 8-hour period would be expressed as $L_{eq}(8)$ and a one-hour period would be $L_{eq}(h)$.

Day-Night Average Sound Level (DNL): DNL, also referred to as L_{dn} , is expressed in dBA and represents the noise level over a 24-hour period. Because environmental noise fluctuates over time, DNL was devised to relate noise exposure over time to human response. DNL is a 24-hour average of the hourly L_{eq} , but with penalties to account for the increased sensitivity to noise events that occur during the more noise-sensitive nighttime periods. Specifically, DNL penalizes noise 10 dBA during the nighttime time period (10:00 p.m. to 7:00 a.m.), but it does not include an evening penalty (7:00 p.m. to 10:00 p.m.). Typically, DNL is about 1 dBA lower than CNEL (described below), although the difference may be greater if there is an abnormal concentration of noise events in the 7:00 p.m. to 10:00 p.m. time period. The U.S. Environmental Protection Agency (USEPA) introduced the metric in 1976 as a single number measurement of community noise exposure. The FAA adopted DNL as the noise metric for measuring aircraft noise under Federal Aviation Regulations (FAR) Part 150, Airport Noise Compatibility Planning. The Department of Housing and Urban Development, the Veterans Administration, the Department of Defense, the United States Coast Guard, and the Federal Transit Administration have also adopted DNL for measuring noise exposure. DNL is used to describe existing and predicted noise exposure in communities in airport environs based on the average daily operations during the year and the average annual operational conditions at an airport. Therefore, at a specific location near an airport, the noise exposure on a

particular day is likely to be higher or lower than the annual average noise exposure depending on the specific operations at an airport on that day. DNL is widely accepted as the best available method to describe aircraft noise exposure and is the noise descriptor required for aircraft noise exposure analyses and land use compatibility planning under FAR Part 150 and for environmental assessments for airport improvement projects (FAA Order 1050.1F).

Community Noise Equivalent Level (CNEL): CNEL, expressed in dBA, is the standard metric used in California to represent cumulative noise exposure. Like DNL, CNEL provides a single-number description of the sound energy to which a person or community is exposed over a period of 24 hours. CNEL includes penalties applied to noise events occurring after 7:00 p.m. and before 7:00 a.m., when noise is considered more intrusive; it also accounts for the typically lower ambient noise levels during these hours. The penalized time period is further subdivided into evening (7:00 p.m. through 9:59 p.m.) and nighttime (10:00 p.m. to 6:59 a.m.). A 10 dB penalty is added to nighttime noise events (equivalent to a ten-fold increase in aircraft operations) and a 5 dB penalty is added to evening noise events. The evening weighting is the only difference between CNEL and DNL.

2.2 Noise Attenuation



Construction noise typically dissipates at a rate of approximately 6.0 dB for each doubling of distance (between the noise source and the receptor). As an example, construction equipment with mufflers (independent of background ambient noise levels) during excavation and grading may generate a noise level of approximately 86 dBA L_{eq} at 50 feet from the noise source. Based on a sound dissipation rate of 6 dB per doubling of distance, a sound level of 86 dBA at 50 feet from the noise source would be approximately 80 dBA at a distance of 100 feet, 74 dBA at a distance of 200 feet, and so on. That sound drop-off rate does not take into account any intervening shielding (including landscaping or trees) or barriers, such as structures or hills between the noise source and noise receptor. A barrier that breaks the line-of-sight between a source and a receiver will typically result in at least 5 dB of noise reduction. A higher barrier may provide as much as 20 dB of noise reduction.

2.3 Effects of Noise on Humans

The effects of noise on humans can be grouped into three general categories:¹

Subjective effects of annoyance, nuisance, dissatisfaction;

Physiological effects such as starting hearing loss; and,

Interference with activities such as speech, sleep, and learning.

With respect to annoyance, human response to sound is highly individualized. Many factors influence the response to noise including the character of the noise, the variability of the sound level, the presence of tones or impulses, and the time of day of the occurrence. Additionally, non-acoustical factors, such as individual opinion of the noise source, the ability to adapt to the noise, the attitude towards the source and those associated with it, and the predictability of the noise, all influence the response to noise. These factors result in the reaction to noise being highly subjective, with the perceived effect of a particular noise varying widely among individuals in a community.

Noise-induced hearing loss usually takes years to develop. Hearing loss is one of the most obvious and easily quantifiable effects of excessive exposure to noise. While the loss may be temporary at first, it can become permanent after continued exposure. When combined with hearing loss associated with aging, the amount of hearing loss directly due to the environment is difficult to quantify. Although the major cause of noise-induced hearing loss is occupational, non-occupational sources may also be a factor.

Noise can mask important sounds and disrupt communication between individuals in a variety of settings. This process can cause anything from a slight irritation to a serious safety hazard, depending on the circumstance. Noise can disrupt face-to-face communication and telephone communication, and the enjoyment of music and

¹ U.S. Environmental Protection Agency, Office of Noise Abatement and Control, *Annoyance, Loudness, and Measurement of Repetitive Type of Impulsive Noise Sources*, pg. 3-1, November 1979.

television in the home. Interference with communication has proved to be one of the most important components of noise-related annoyance.

3. Regulatory Environment

Many government agencies have established noise standards and guidelines to protect citizens from potential hearing damage and various other adverse effects associated with noise. Construction noise is regulated at the local level by the cities of Burbank and Los Angeles. The city policies that relate to construction noise are summarized in the subsections that follow.

3.1 City of Burbank Noise Regulation

The City of Burbank Municipal Code (Chapter III, Article II, Division 1 - Division 2) provides regulations regarding allowable increases in noise levels in terms of established noise criteria. Supplementing these regulations, the City of Burbank has also established guidelines that are used for land use planning purposes.

Chapter III of the Burbank Municipal Code (City of Burbank Noise Ordinance) establishes acceptable ambient sound levels to regulate intrusive noises (e.g., stationary mechanical equipment and vehicles other than those traveling on public streets, as further described below) within specific land use zones.

3.2 City of Burbank General Plan Noise Element

The City of Burbank has developed a Noise Element of the General Plan to guide in the development of noise regulations. The Noise Element of the City of Burbank General Plan addresses noise mitigation regulations, strategies, and programs and delineates federal, state, and City of Burbank jurisdiction relative to rail, automotive, aircraft, and nuisance noise. The City of Los Angeles has adopted local guidelines based, in part, on the community noise compatibility guidelines established by the California Department of Health Services (CDHS) for use in assessing the compatibility of various land use types with a range of noise levels. CNEL guidelines for specific land uses are classified into four categories: (1) “normally acceptable,” (2) “possibly acceptable,” (3) “normally unacceptable,” and (4) “clearly unacceptable.” A CNEL value of 65 dBA is the upper limit of what is considered a “normally acceptable” noise environment for multi-family residential uses, although a CNEL as high as 70 dBA is considered “conditionally acceptable.” The upper limit of what is considered “normally unacceptable” for residential uses is set at 71 dBA CNEL.

3.3 City of Los Angeles Noise Standards

The City of Los Angeles municipal code (LAMC) noise regulations are not applicable to operational noise from the Airport. However, in accordance with Section 41.40 of the LAMC, construction noise is restricted as follows:

“No person shall, between the hours of 9:00 PM and 7:00 AM of the following day, perform any construction or repair work of any kind upon, or any excavating for, any building or structure, where any of the foregoing entails the use of any power-driven drill, riveting machine excavator or any other machine, tool, device or equipment which makes loud noises to the disturbance of persons occupying sleeping quarters in any dwelling hotel or apartment or other place of residence. In addition, the operation, repair or servicing of construction equipment and the job-site delivering of construction materials in such areas shall be prohibited during the hours herein specified. Any person who knowingly and willfully violates the foregoing provision shall be deemed guilty of a misdemeanor punishable as elsewhere provided in this Code.”

The City of Los Angeles Noise Regulation (Noise Regulation) also limits noise from construction equipment within 500 feet of a residential zone to 75 dBA, measured at a distance of 50 feet from the source, unless compliance with this limitation is technically infeasible. Technically infeasible means the noise limitation cannot be met despite the use of mufflers, shields, sound walls and/or any other noise reduction device or techniques during the operation of equipment. The Noise Regulation prohibits construction noise between the hours of 9:00 PM and 7:00 AM Monday through Friday and on Saturday before 8:00 AM and after 6:00 PM and does not allow

construction noise on Sunday. The City of Los Angeles may provide permission to work outside of these hours if it is in the public interest, or where a hardship or injustice, or unreasonable delay would result from its interruption during the hours provided in Section 41.40 of the LAMC.

Construction noise would not exceed the City of Los Angeles Noise Regulation of 75 dBA within 500 feet of a residential zone.

3.4 Impact Criteria

The Proposed Project would result in an impact related to construction equipment noise if construction activities would:

Exceed the City of Los Angeles construction noise threshold for those noise sensitive areas within the City of Los Angeles's limits, or

Exceed existing ambient exterior noise levels by 5 dB or more at a noise-sensitive use in association with the following:

- Construction activities lasting more than 10 days in a 3-month period; or
- Construction activities occurring between the hours of 9:00 p.m. and 7:00 a.m. Monday through Friday, before 8:00 a.m. or after 6:00 p.m. on Saturday, or at any time on Sunday.

The 5 dB or more increase threshold is based on the City of Los Angeles California Environmental Quality Act (CEQA) Thresholds Guide's significance thresholds for construction noise.² It is anticipated that construction of the Proposed Project would involve construction activities lasting more than ten days in a three month period, and it is likely that Project-related construction may periodically occur within evening/nighttime hours and on weekends; hence, this threshold was utilized for the construction equipment noise impact analysis. This impact threshold is also used for those areas within the City of Burbank limits since it is more conservative than the City of Burbank regulations.

4. Methodology

Construction activities typically generate noise from the operation of equipment required for demolition and construction of various facilities. Proposed Project construction noise has been evaluated by considering the construction activity, calculating the construction-related noise level at nearby noise-sensitive receptor locations, and comparing these construction-related noise levels to local construction noise limits and existing ambient noise levels. Specifically, the following methods were used in the analysis:

1. Existing (ambient) Leq dBA noise levels at five surrounding noise-sensitive receptor locations were collected over a one-week period.
2. Typical noise levels for each type of construction equipment (e.g., jackhammers, bulldozers, excavators, dump trucks, pavers, etc.) were obtained from the FHWA RCNM version 2.0³. Usage factors for equipment types were included in the calculations, based on factors identified by FHWA as being typical for construction of roadway infrastructure projects and are consistent with the construction efforts for the Proposed Project.
3. Calculations of construction noise were conducted using the approach described in the RCNM user's manual and conducted in the three-dimensional sound propagation software program SoundPLAN. This model accounts for intervening buildings, topography, acoustically hard and soft surfaces, and other inputs that can affect how sound attenuates with distance.
4. Construction noise was calculated for daytime periods based on the anticipated construction phasing. The construction phases were provided by the Authority and were used to calculate construction noise exposure throughout the time periods when construction would occur. The construction phasing assumes nine construction phases and one demolition phase. The construction

² City of Los Angeles, L.A. CEQA Thresholds Guide, Your Resource for Preparing CEQA Analyses in Los Angeles, 2006.

³ FHWA RCNM 2.0, FHWA 2018, accessed online [RCNM Version 2.0 - Construction Noise - Noise - Environment - FHWA \(dot.gov\)](https://www.fhwa.gov/infrastructure/qa/RCNM20/)

phases would occur prior to the demolition phase because the replacement terminal would need to be completed and operational prior to the demolition of the existing terminal.

5. To determine noise levels associated with each phase of construction of the Proposed Project, it was assumed that every piece of construction equipment identified for that phase would be operating at the same time. This is the most conservative approach to identifying construction noise because the use of every piece of construction equipment at the same time would be difficult to achieve and not typical for most construction projects. The detailed calculation methods for construction are based on the quantities of construction equipment, schedule of construction efforts, construction equipment noise source levels, and the equations provided in Section 5 of the RCNM User's Manual. It is also consistent with the Court's directive to consider noise levels from multiple pieces of equipment operating at the same time.
6. To determine construction noise from multiple pieces of equipment operating simultaneously, the SoundPLAN model was used following the general methodology prescribed in the RCNM User's Manual.
7. To be consistent with the City of Los Angeles's noise standards, this analysis assumes construction would occur on weekdays from 7:00 AM to 9:00 PM.
8. Calculated total noise levels at noise measurement locations were then compared to ambient noise levels and the City of Los Angeles's noise standards.



The anticipated construction schedule is provided in Figure 3. The construction phases and equipment quantities used in this analysis are listed in Table A-1 of Attachment A.

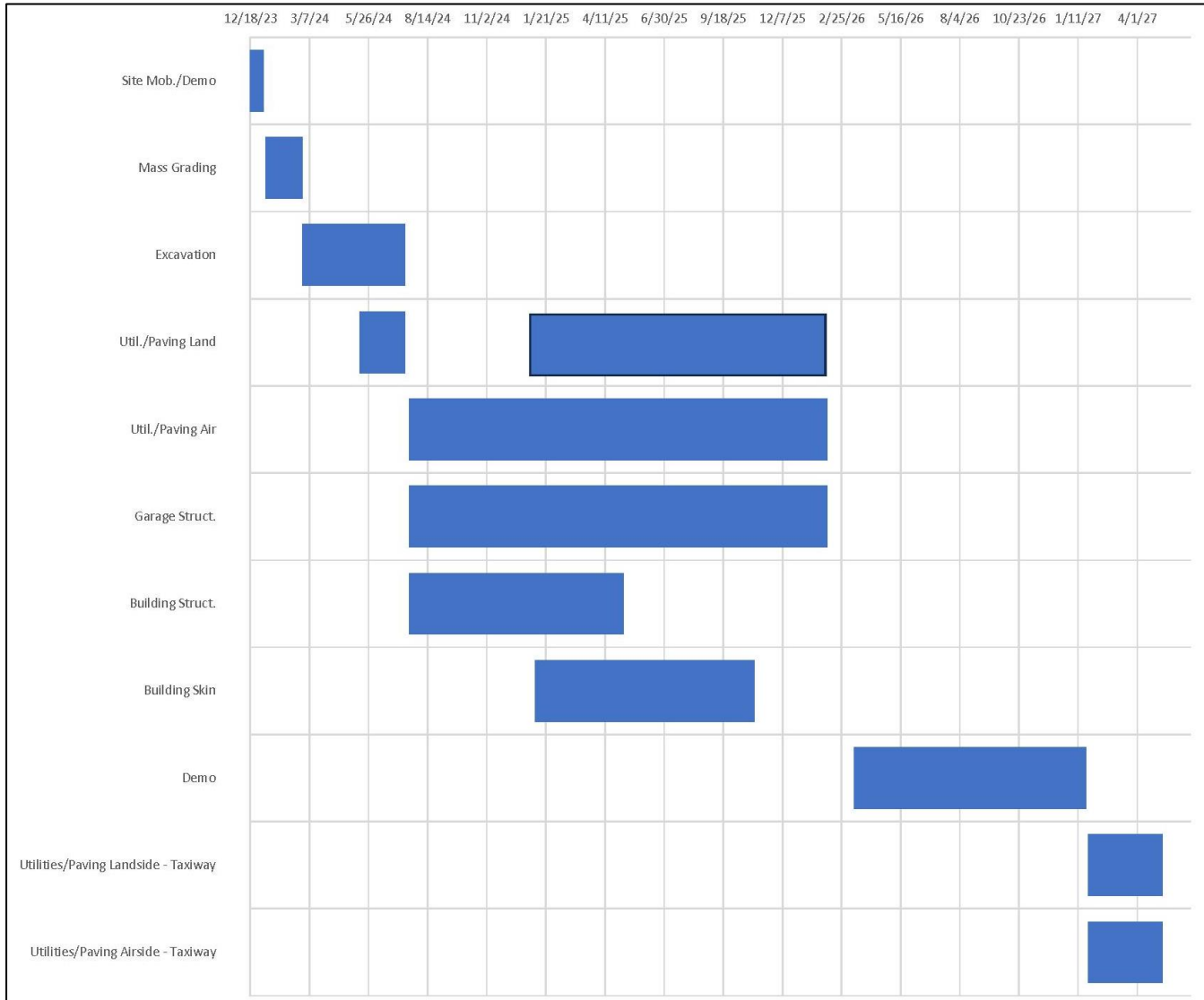


Figure 3. Proposed Project Preliminary Construction Schedule



5. Existing Conditions

For the construction noise analysis daytime is defined as occurring from 7:00 AM to 9:00 PM in the Los Angeles City Code.

The noise measurements were conducted over a week-long period at the five locations chosen by the FAA using type 1 precision sound level meters, which continuously log sound levels and record audio of significant sound events. The results of these noise measurements are provided in Table 2 (see Attachment B for additional detail).

Table 2. Measurement Summary

Measurement Number (Census Block Group)	Jurisdiction	Daytime Leq (7:00 AM – 9:00 PM)	CNEL
M1 (1232.04)	City of Los Angeles	64	65
M2 (1232.03)	City of Los Angeles	69	70
M3 (3110)	City of Burbank	58	59
M4 (3105.01)	City of Burbank	60	63
M5 (1021.05)	City of Los Angeles	62	65



Error! Reference source not found.

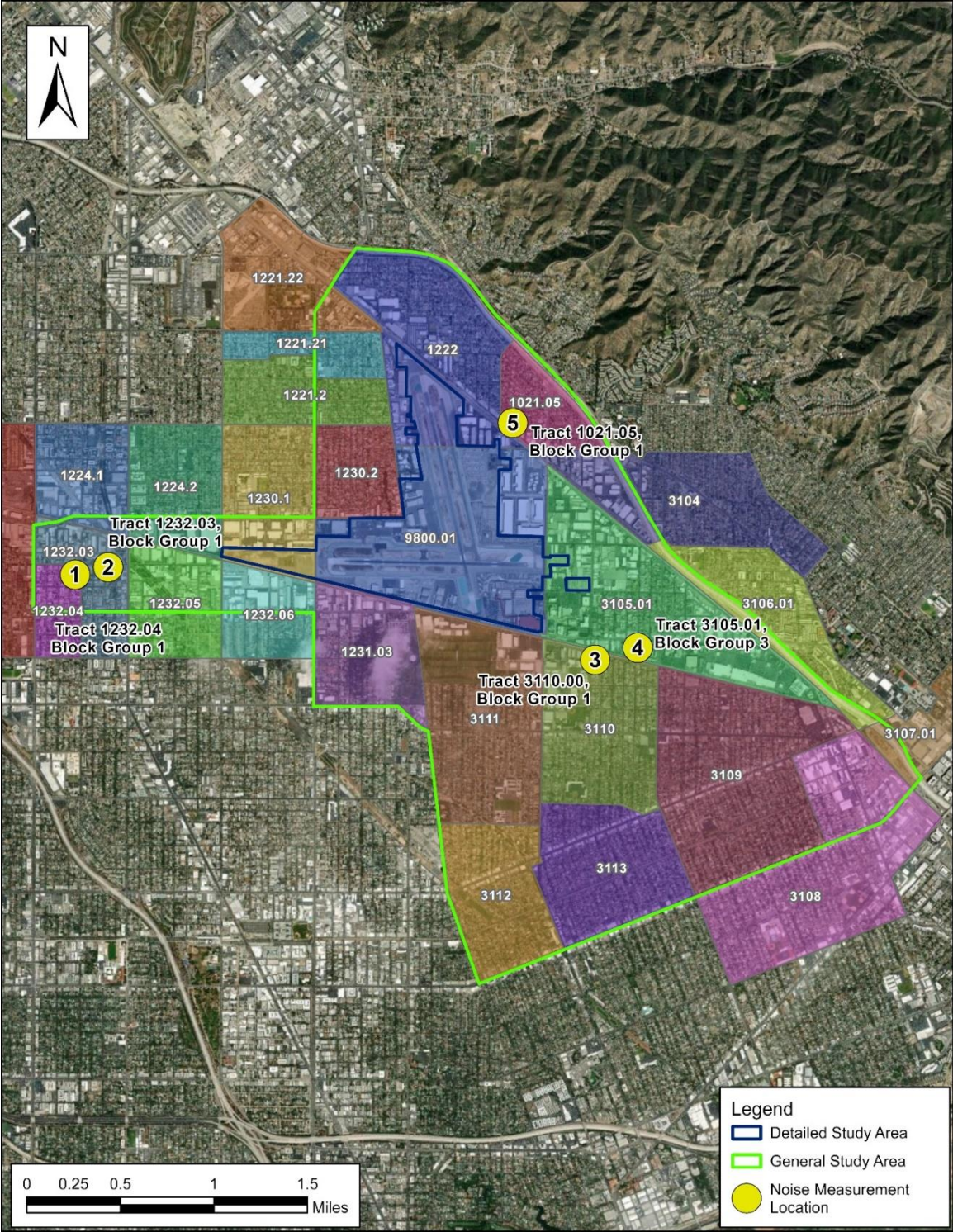


Figure 4. Noise Measurement Locations

Sources: U.S. Census Bureau, 2018; RS&H, 2023.

6. Impact Analysis

6.1 Construction Noise Analysis

Construction noise was assessed by implementing the methodologies included in the latest version of the FHWA RCNM. Quantitative assessment of noise from construction includes calculations of noise propagation from heavy construction anticipated for the Proposed Project at the five noise measurement locations. As shown in Figure 4, there are several types of noise-sensitive uses in proximity to the Proposed Project. Figure 5 shows locations of the receivers around the Airport that were evaluated in the analysis.



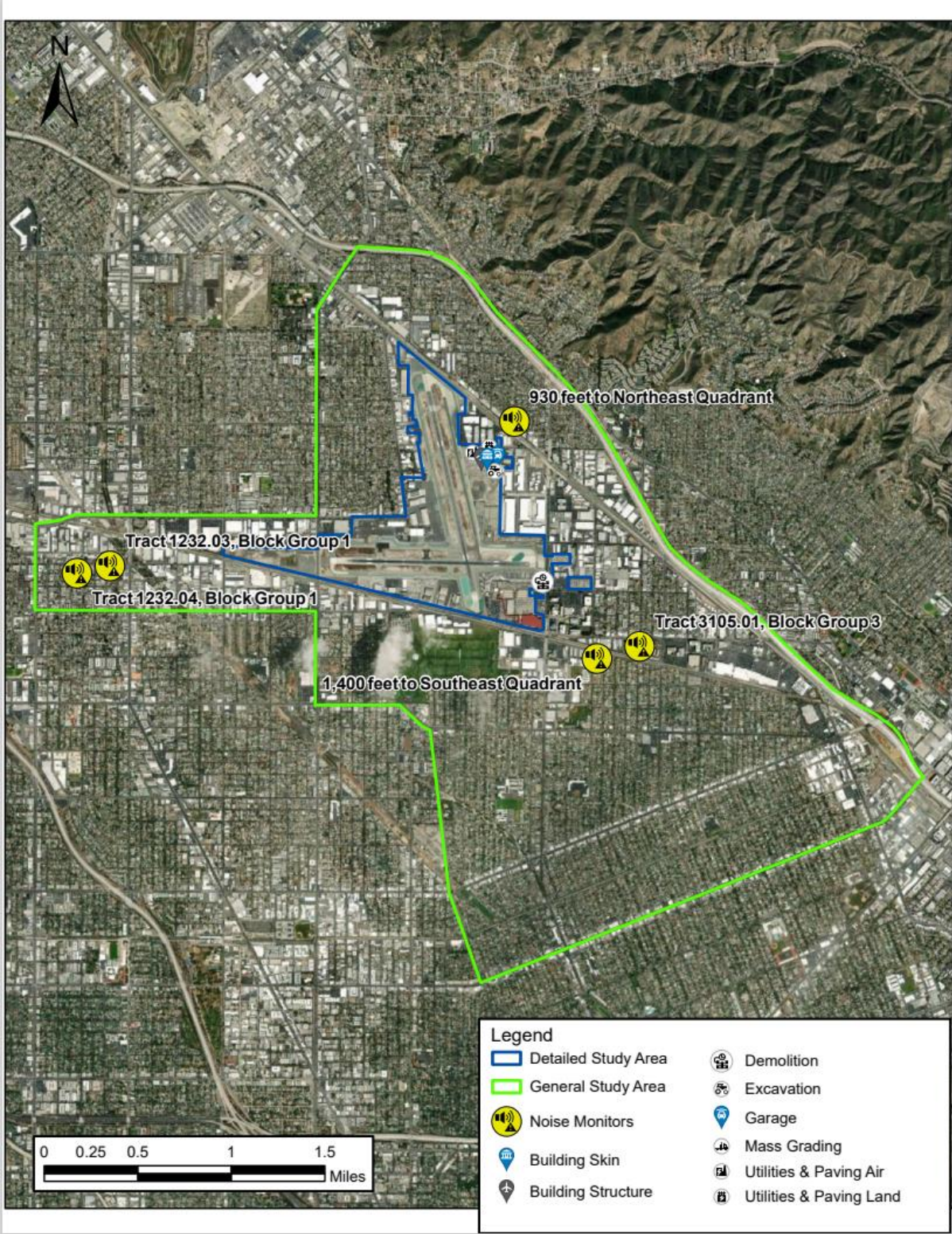


Figure 5. Construction Noise Analysis Receivers

The details of the construction effort were provided by the Authority and were used to calculate construction noise exposure throughout the time periods of days when construction would occur. This included ten separate construction phases, which were developed to ensure that a maximum quantity of construction equipment would be analyzed simultaneously. These construction phases and the construction equipment to be used for each construction scenario are presented in Attachment A. The detailed calculation methods for construction are based on the quantities of construction equipment, schedule of construction efforts, and construction equipment noise source levels and utilizing the equations provided in Section 5 of the RCNM User’s Manual.

Table 3 provides the predicted Leq for construction phases B0 through B6 and B8. Table 4 presents the predicted construction noise level logarithmically added to the measured daytime ambient sound level. Table 5 lists the predicted changes in sound levels at each of the measurement locations. The changes were calculated subtracting the ambient from the levels in Table 4. Figure 6 through Figure 13 are noise contour maps for construction scenarios B1 through B6 and B8 depicting how construction noise would attenuate with distance over the census block groups included in this analysis. The following construction efforts are represented by each of these phases:



- B0 – Site mobilization and demolition
- B1 – Mass Grading
- B2 – Excavation and Utilities/Paving Landside
- B3 – Utilities/Paving Airside, Garage Structure, Building Structure
- B4 – Utilities/Paving Landside, Utilities/Paving Airside, Garage Structure, Building Structure, Building Skin
- B5 – Utilities/Paving Landside, Utilities/Paving Airside, Garage Structure, Building Skin
- B6 – Utilities/Paving Landside, Utilities/Paving Airside, Garage Structure
- B8 – Utilities/Paving Landside and Utilities/Paving Airside

Construction noise levels would generally be highest at measurement number five (M5) within census block group 1021.05. At all other measurement locations, construction noise levels would be below the measured daytime (7:00 am to 9:00 pm) Leq. Exceedances of the ambient daytime noise levels would not necessarily constitute an impact unless the level is significantly higher than ambient. Generally speaking, a 3 dB change in similar sound levels would barely be noticeable by typical human hearing, a 5 dB change is readily noticeable, and a 10 dB change would be perceived as a doubling in sound. Construction noise would range from no change to 6 dB above ambient at M5 with the largest increases associated with construction phases four and five. Changes in sound levels that would not be readily perceptible would not constitute an impact; however, increases of 5 dB would be readily perceptible.

Table 3. Construction and Demolition Noise dBA Leq by Construction and Demolition Phase Number

Measurement Number (Census Block Group)	Daytime dBA Leq	dBA Leq by Construction Phase							
		B0	B 1	B 2	B 3	B 4	B 5	B 6	B 8
M1 (1232.04)	64	25	33	39	41	44	43	41	39
M2 (1232.03)	69	26	34	40	42	45	44	42	40
M3 (3110)	58	31	40	47	49	52	52	49	45
M4 (3105.01)	60	32	40	48	50	54	53	50	48
M5 (1021.05)	62	45	54	60	64	67	67	63	58

Table 4. Predicted Noise plus Ambient Sound Level by Construction and Demolition Phase Number

Measurement Number (Census Block Group)	Predicted Increase (dB)							
	B 0	B 1	B 2	B 3	B 4	B 5	B 6	B 8
M1 (1232.04)	0	0	0	0	0	0	0	0
M2 (1232.03)	0	0	0	0	0	0	0	0
M3 (3110)	0	0	0	0	1	1	1	0
M4 (3105.01)	0	0	0	0	1	1	0	0
M5 (1021.05)	0	1	2	4	6	6	4	1

Table 5. Predicted Increase in Noise by Construction and Demolition Phase Number



Measurement Number (Census Block Group)	Predicted Increase (dB)							
	B 0	B 1	B 2	B 3	B 4	B 5	B 6	B 8
M1 (1232.04)	0	0	0	0	0	0	0	0
M2 (1232.03)	0	0	0	0	0	0	0	0
M3 (3110)	0	0	0	0	1	1	1	0
M4 (3105.01)	0	0	0	0	1	1	0	0
M5 (1021.05)	0	1	2	4	6	6	4	1

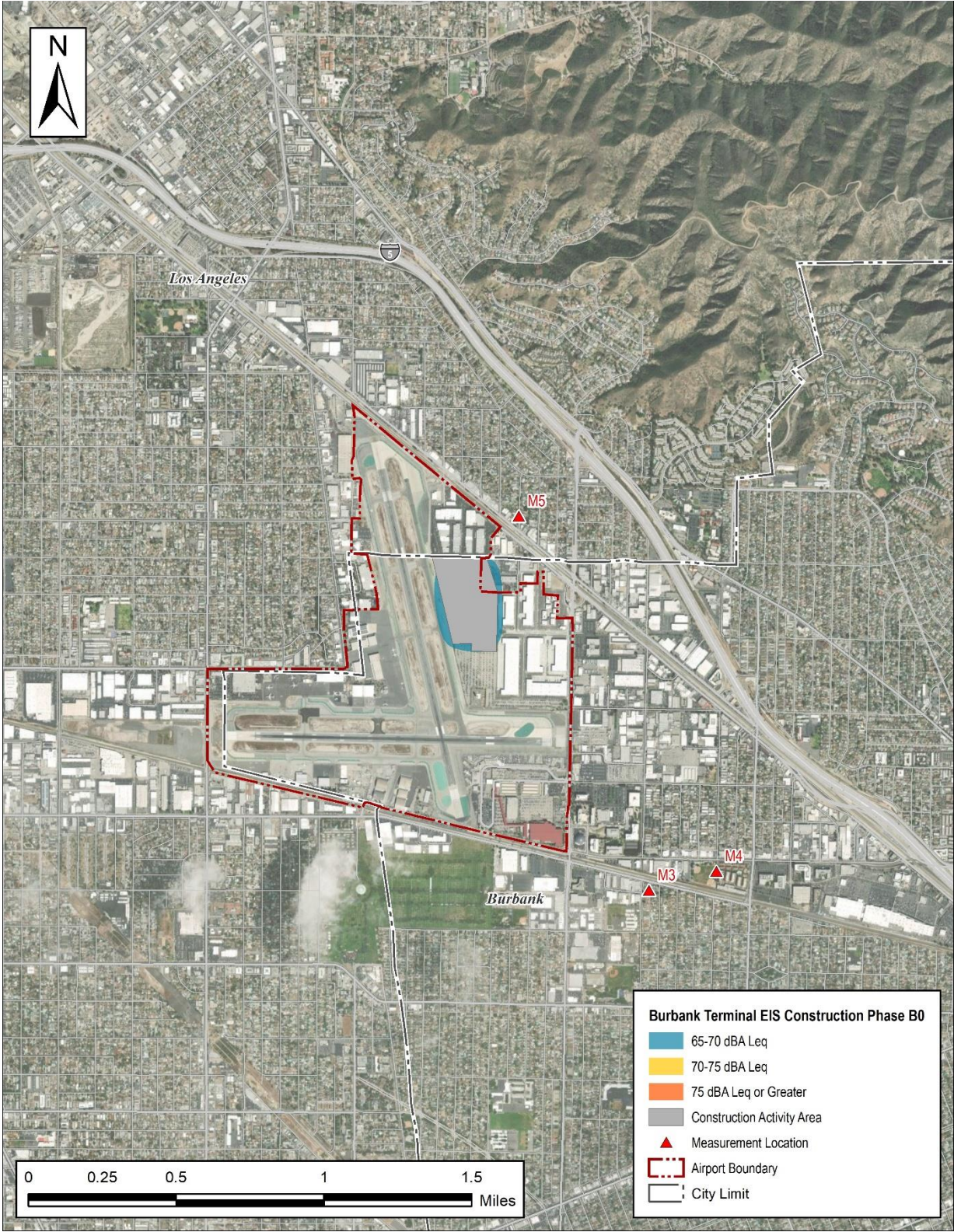


Figure 6. Construction Phase B0 dBA Leq Noise Contours

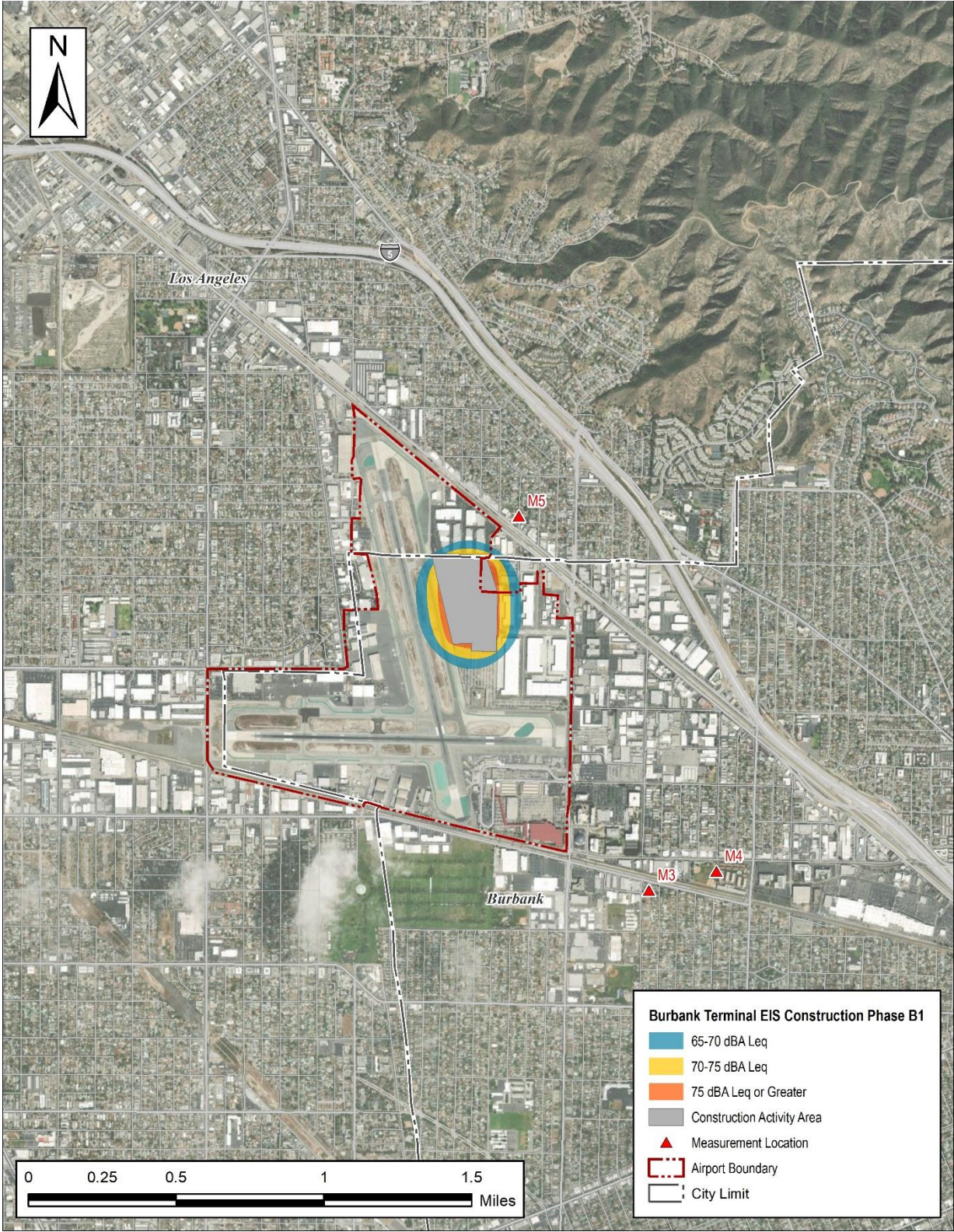


Figure 7. Construction Phase B1 dBA Leq Noise Contours

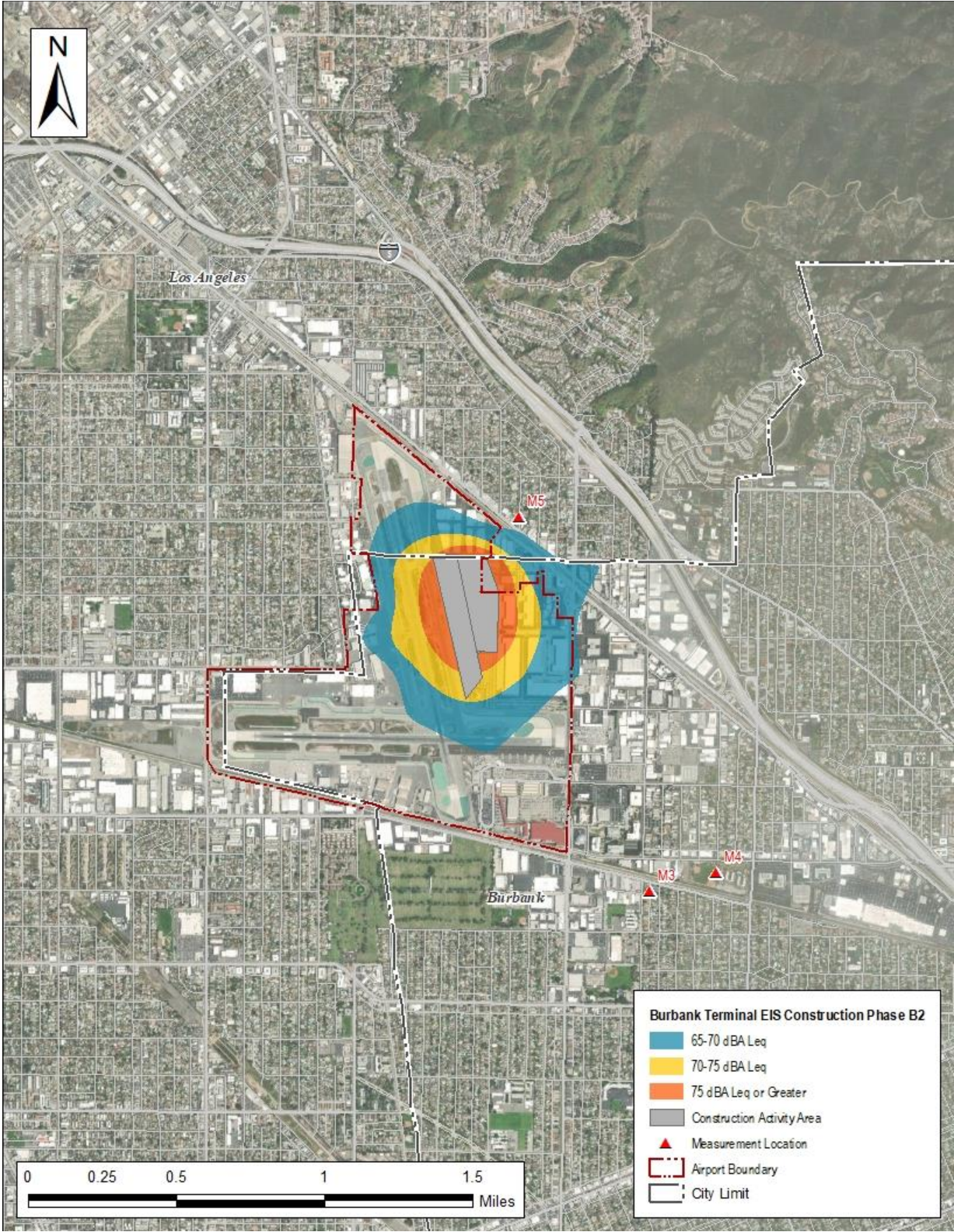


Figure 8. Construction Phase B2 dBA Leq Noise Contours

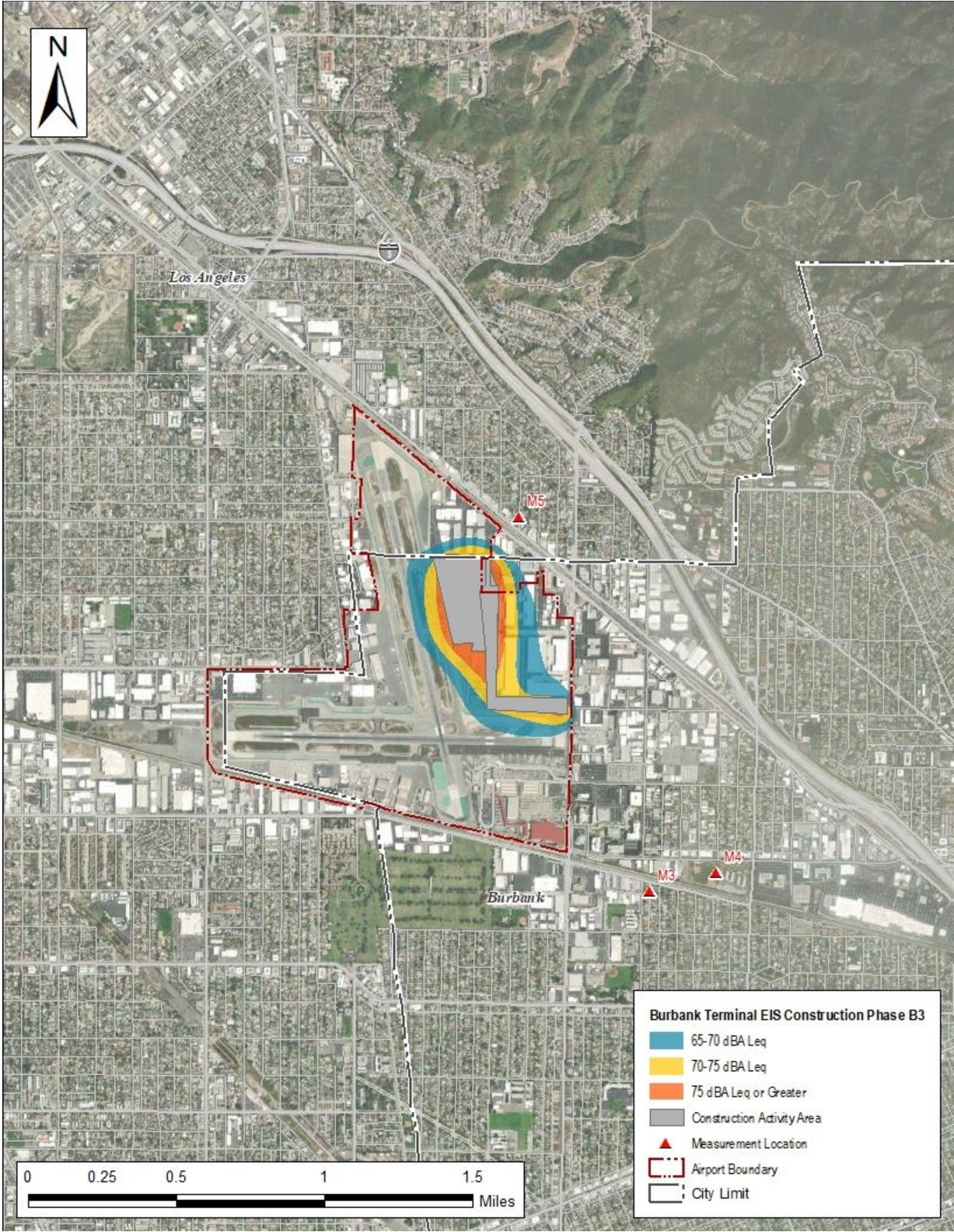


Figure 9. Construction Phase B3 dBA Leq Noise Contours

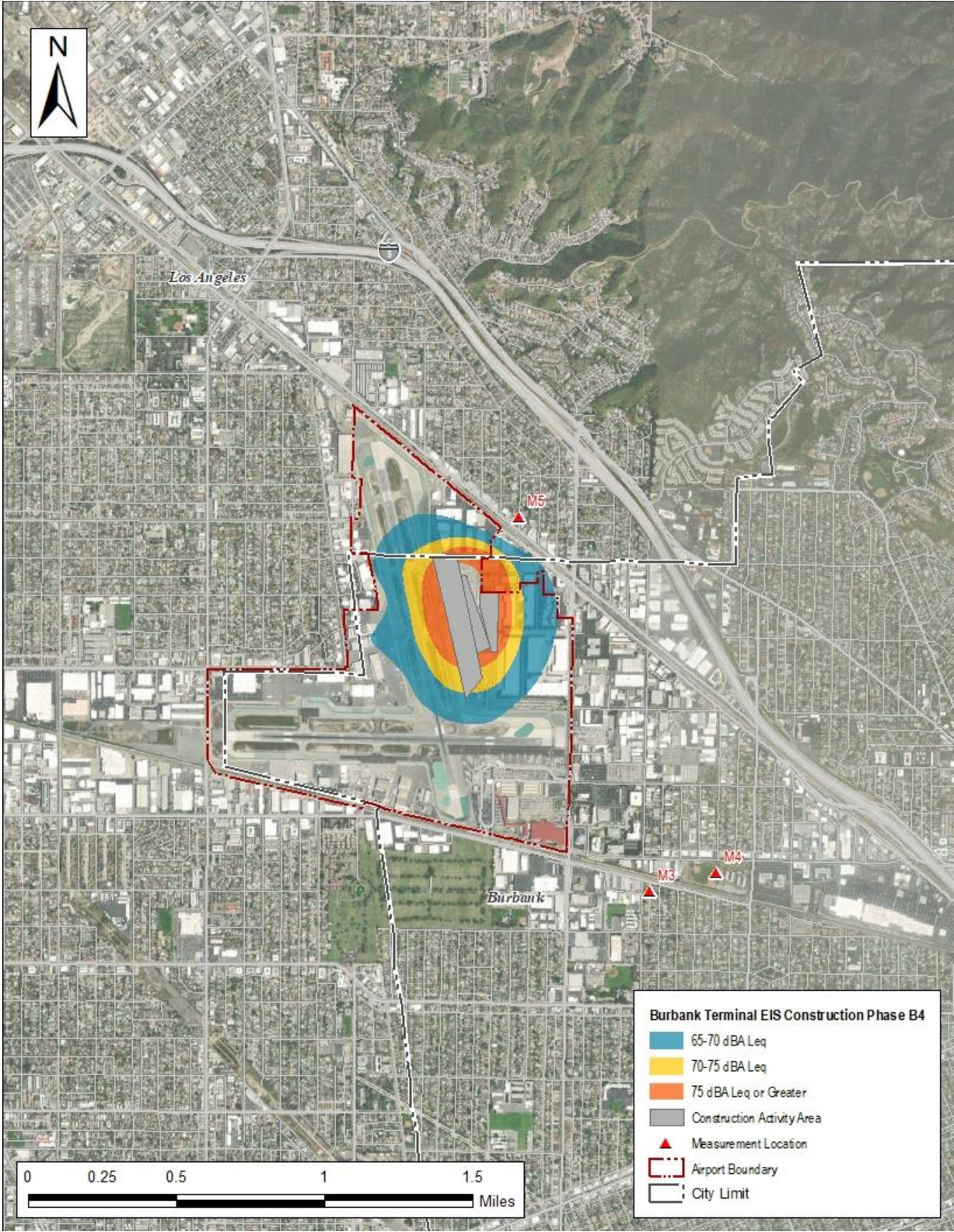


Figure 10. Construction Phase B4 dBA Leq Noise Contours

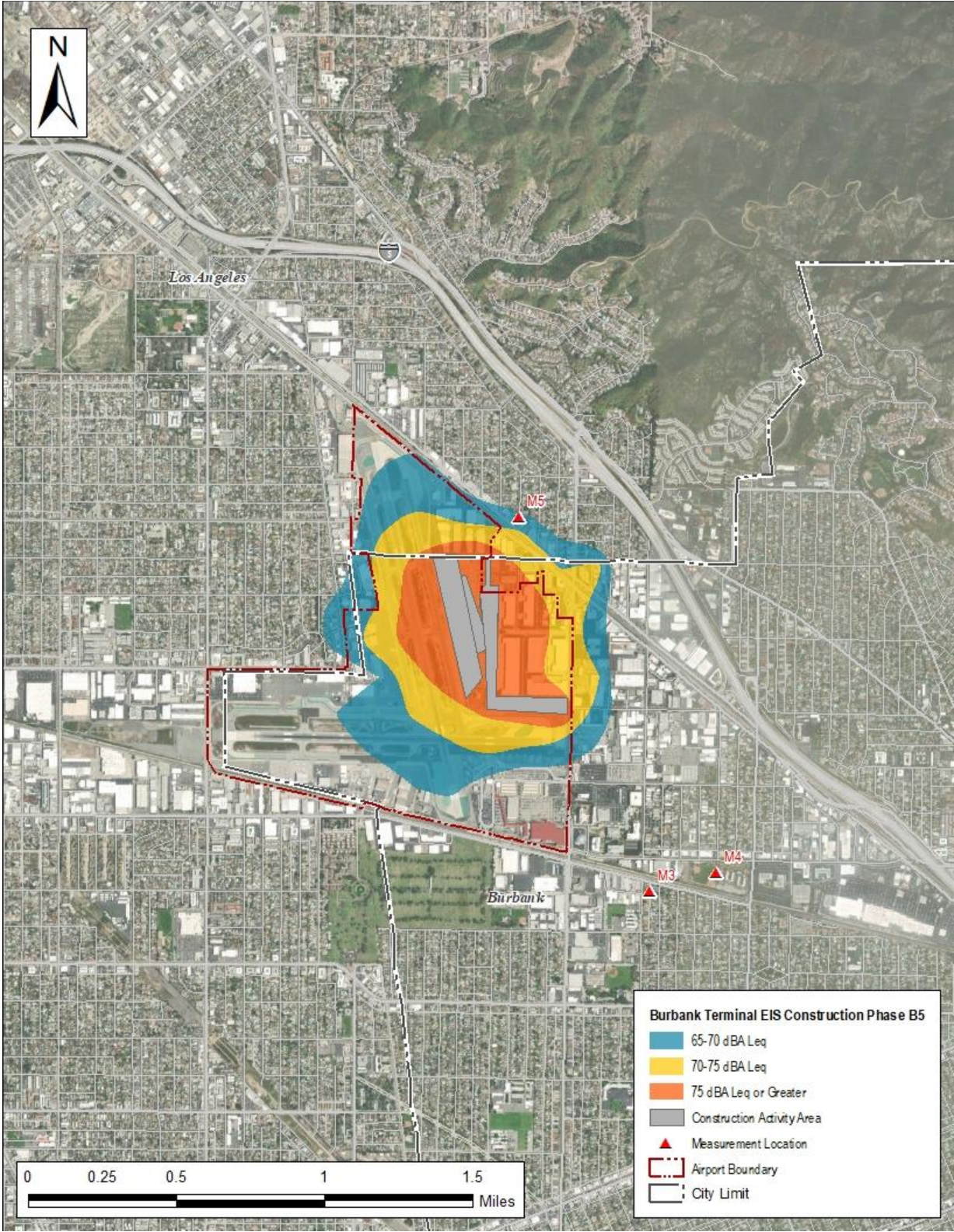


Figure 11. Construction Phase B5 dBA Leq Noise Contours

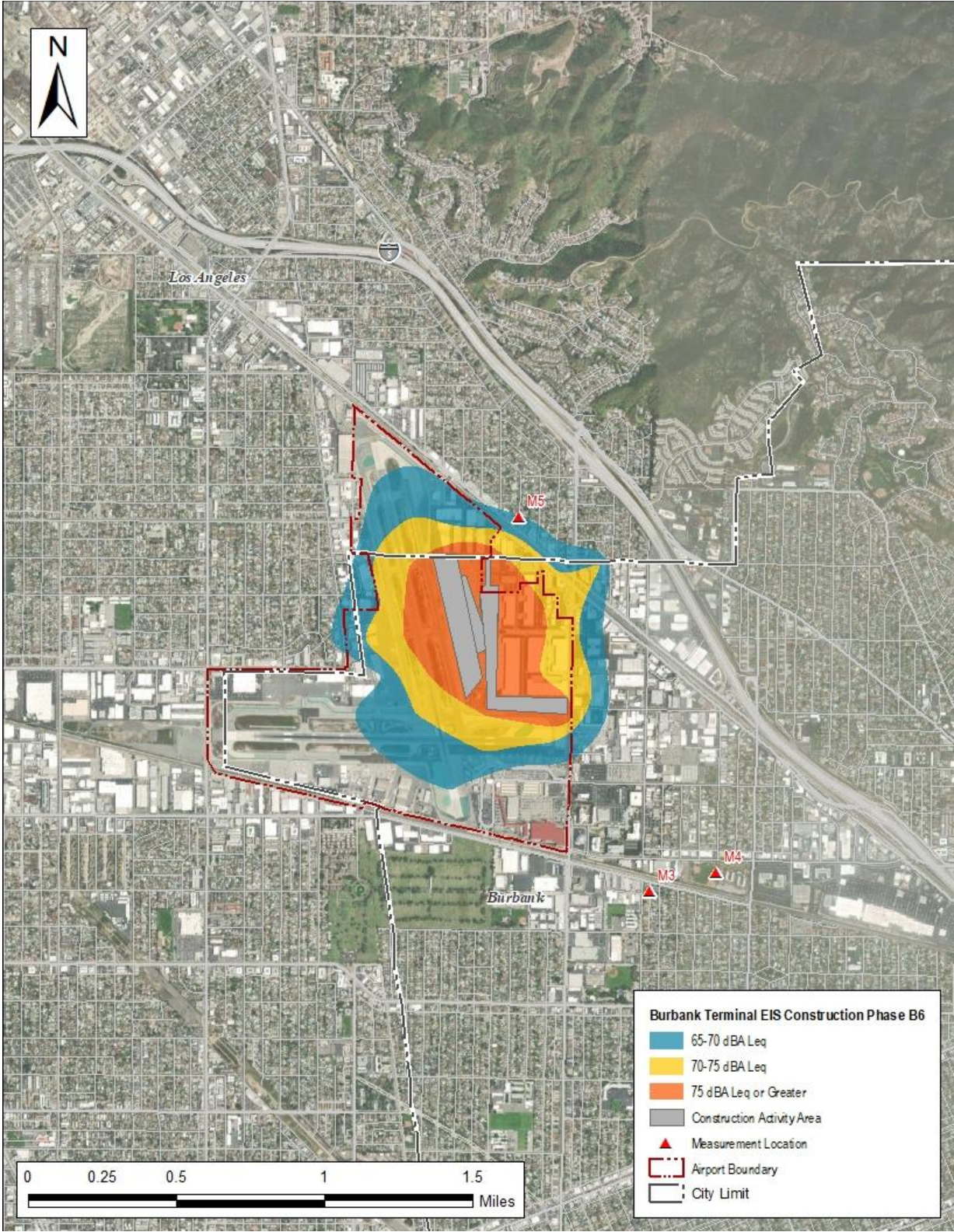


Figure 12. Construction Phase B6 dBA Leq Noise Contours

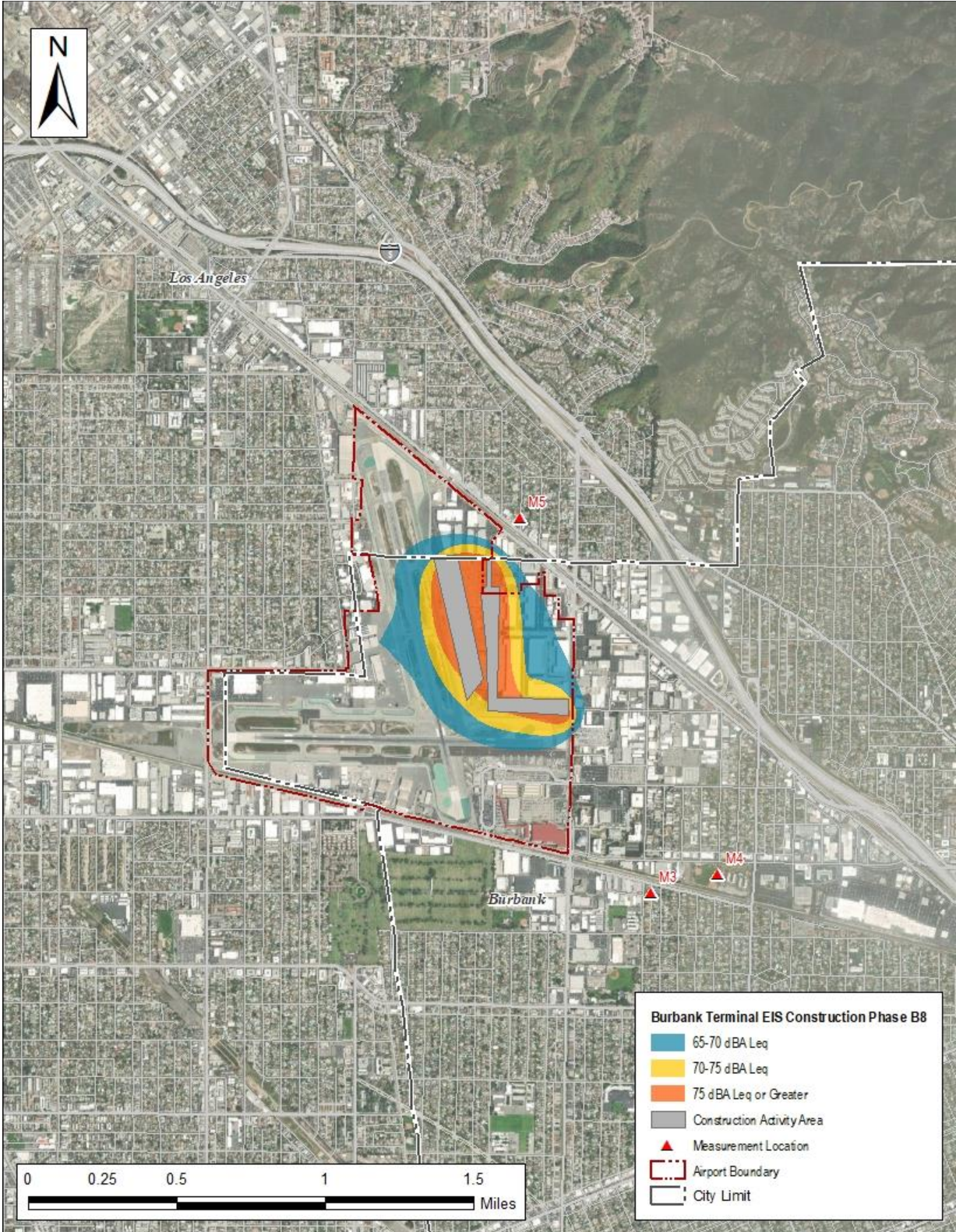


Figure 13. Construction Phase B9 dBA Leq Noise Contours

6.2 Demolition Noise Analysis

Demolition noise was assessed using the same methodologies as those for the construction noise analysis. Table 6 provides the predicted Leq for the demolition efforts and Figure 14 is a map of the demolition noise contours. As with construction phases B0 through B7 and B9, the highest construction noise levels associated with the demolition effort would occur at M5; however, these levels would be well below the measured daytime Leq. For this reason, no impact is predicted from project demolition noise.

Table 6. Demolition Noise dBA Leq

Measurement Number (Census Block Group)	Daytime dBA Leq	B7 Demolition dBA Leq
M1 (1232.04)	64	32
M2 (1232.03)	69	33
M3 (3110)	58	38
M4 (3105.01)	60	48
M5 (1021.05)	62	46





Figure 14. Demolition Phase B7 dBA Leq Noise Contours

ATTACHMENT A: CONSTRUCTION EQUIPMENT SOURCE DATA



Site Mobilization and Demolition

BUR Terminal Reconstruction Construction Equipment	RCNM 2.0 Source /a/	Sound Power (Lw) dB(A)	31.5Hz /b/ dB(A)	63Hz /b/ dB(A)	125Hz /b/ dB(A)	250Hz /b/ dB(A)	500Hz /b/ dB(A)	1kHz /b/ dB(A)	2kHz /b/ dB(A)	4kHz /b/ dB(A)	8kHz /b/ dB(A)	16kHz /b/ dB(A)
Dozer 1/1	Dozer	117.7	64.6	78.9	93.8	110.8	111.2	113.3	110.0	100.9	95.5	86.3
Dump Truck 1/2	Dump Truck (Passby)	104.7	65.9	81.2	84.6	99.4	96.5	100.3	95.6	91.2	83.4	73.7
Dump Truck 2/2	Dump Truck (Passby)	104.7	65.9	81.2	84.6	99.4	96.5	100.3	95.6	91.2	83.4	73.7
Excavator 1/2	Excavator	118.3	71.7	86.2	107.2	108.9	115.1	111.5	108.4	102.2	93.3	79.3
Excavator 2/2	Excavator	118.3	71.7	86.2	107.2	108.9	115.1	111.5	108.4	102.2	93.3	79.3
Loader 1/1	Front End Loader (Cyclical)	113.0	61.7	79.3	90.6	103.3	110.1	104.7	104.5	101.7	93.7	74.3
Roller 1/1	Compactor (Roller)	114.0	79.7	95.9	95.5	109.7	107.1	108.8	101.9	97.3	88.4	75.6
Skid Steer 1/1	Front End Loader (Cyclical)	113.0	61.7	79.3	90.6	103.3	110.1	104.7	104.5	101.7	93.7	74.3



[Empty Table Area]

/a/ If a specific piece of construction equipment provided by the Burbank-Glendale-Pasadena Airport Authority was not specifically listed in RCNM 2.0, a surrogate piece of equipment is identified.
 /b/ RCNM 2.0 full octave band source levels.

Demolition



BUR Terminal Reconstruction Construction Equipment	RCNM 2.0 Source /a/ /b/	Sound Power (Lw) dB(A)	31.5Hz	63Hz	125Hz	250Hz	500Hz	1kHz	2kHz	4kHz	8kHz	16kHz
			/b/ dB(A)	/b/ dB(A)	/b/ dB(A)	/b/ dB(A)	/b/ dB(A)	/b/ dB(A)	/b/ dB(A)	/b/ dB(A)	/b/ dB(A)	/b/ dB(A)
Articulating Loader 1/11	Front End Loader (Cyclical)	113.0	61.7	79.3	90.6	103.3	110.1	104.7	104.5	101.7	93.7	74.3
Articulating Loader 2/11	Front End Loader (Cyclical)	113.0	61.7	79.3	90.6	103.3	110.1	104.7	104.5	101.7	93.7	74.3
Articulating Loader 3/11	Front End Loader (Cyclical)	113.0	61.7	79.3	90.6	103.3	110.1	104.7	104.5	101.7	93.7	74.3
Articulating Loader 4/11	Front End Loader (Cyclical)	113.0	61.7	79.3	90.6	103.3	110.1	104.7	104.5	101.7	93.7	74.3
Articulating Loader 5/11	Front End Loader (Cyclical)	113.0	61.7	79.3	90.6	103.3	110.1	104.7	104.5	101.7	93.7	74.3
Articulating Loader 6/11	Front End Loader (Cyclical)	113.0	61.7	79.3	90.6	103.3	110.1	104.7	104.5	101.7	93.7	74.3
Articulating Loader 7/11	Front End Loader (Cyclical)	113.0	61.7	79.3	90.6	103.3	110.1	104.7	104.5	101.7	93.7	74.3
Articulating Loader 8/11	Front End Loader (Cyclical)	113.0	61.7	79.3	90.6	103.3	110.1	104.7	104.5	101.7	93.7	74.3
Articulating Loader 9/11	Front End Loader (Cyclical)	113.0	61.7	79.3	90.6	103.3	110.1	104.7	104.5	101.7	93.7	74.3
Articulating Loader 10/11	Front End Loader (Cyclical)	113.0	61.7	79.3	90.6	103.3	110.1	104.7	104.5	101.7	93.7	74.3
Articulating Loader 11/11	Front End Loader (Cyclical)	113.0	61.7	79.3	90.6	103.3	110.1	104.7	104.5	101.7	93.7	74.3
Dozer 1/2	Dozer	117.7	64.6	78.9	93.8	110.8	111.2	113.3	110.0	100.9	95.5	86.3
Dozer 2/2	Dozer	117.7	64.6	78.9	93.8	110.8	111.2	113.3	110.0	100.9	95.5	86.3
Excavator 1/4	Excavator	118.3	71.7	86.2	107.2	108.9	115.1	111.5	108.4	102.2	93.3	79.3
Excavator 2/4	Excavator	118.3	71.7	86.2	107.2	108.9	115.1	111.5	108.4	102.2	93.3	79.3
Excavator 3/4	Excavator	118.3	71.7	86.2	107.2	108.9	115.1	111.5	108.4	102.2	93.3	79.3
Excavator 4/4	Excavator	118.3	71.7	86.2	107.2	108.9	115.1	111.5	108.4	102.2	93.3	79.3
Excavator/Sorting 1/8	Excavator	118.3	71.7	86.2	107.2	108.9	115.1	111.5	108.4	102.2	93.3	79.3
Excavator/Sorting 2/8	Excavator	118.3	71.7	86.2	107.2	108.9	115.1	111.5	108.4	102.2	93.3	79.3
Excavator/Sorting 3/8	Excavator	118.3	71.7	86.2	107.2	108.9	115.1	111.5	108.4	102.2	93.3	79.3
Excavator/Sorting 4/8	Excavator	118.3	71.7	86.2	107.2	108.9	115.1	111.5	108.4	102.2	93.3	79.3
Excavator/Sorting 5/8	Excavator	118.3	71.7	86.2	107.2	108.9	115.1	111.5	108.4	102.2	93.3	79.3
Excavator/Sorting 6/8	Excavator	118.3	71.7	86.2	107.2	108.9	115.1	111.5	108.4	102.2	93.3	79.3
Excavator/Sorting 7/8	Excavator	118.3	71.7	86.2	107.2	108.9	115.1	111.5	108.4	102.2	93.3	79.3
Excavator/Sorting 8/8	Excavator	118.3	71.7	86.2	107.2	108.9	115.1	111.5	108.4	102.2	93.3	79.3
Haul Truck 1/29	Flatbed Truck	105.8	58.1	72.1	87.8	99.7	100.4	100.0	97.1	92.0	81.0	63.1
Haul Truck 2/29	Flatbed Truck	105.8	58.1	72.1	87.8	99.7	100.4	100.0	97.1	92.0	81.0	63.1
Haul Truck 3/29	Flatbed Truck	105.8	58.1	72.1	87.8	99.7	100.4	100.0	97.1	92.0	81.0	63.1
Haul Truck 4/29	Flatbed Truck	105.8	58.1	72.1	87.8	99.7	100.4	100.0	97.1	92.0	81.0	63.1
Haul Truck 5/29	Flatbed Truck	105.8	58.1	72.1	87.8	99.7	100.4	100.0	97.1	92.0	81.0	63.1
Haul Truck 6/29	Flatbed Truck	105.8	58.1	72.1	87.8	99.7	100.4	100.0	97.1	92.0	81.0	63.1
Haul Truck 7/29	Flatbed Truck	105.8	58.1	72.1	87.8	99.7	100.4	100.0	97.1	92.0	81.0	63.1
Haul Truck 8/29	Flatbed Truck	105.8	58.1	72.1	87.8	99.7	100.4	100.0	97.1	92.0	81.0	63.1
Haul Truck 9/29	Flatbed Truck	105.8	58.1	72.1	87.8	99.7	100.4	100.0	97.1	92.0	81.0	63.1
Haul Truck 10/29	Flatbed Truck	105.8	58.1	72.1	87.8	99.7	100.4	100.0	97.1	92.0	81.0	63.1
Haul Truck 11/29	Flatbed Truck	105.8	58.1	72.1	87.8	99.7	100.4	100.0	97.1	92.0	81.0	63.1
Haul Truck 12/29	Flatbed Truck	105.8	58.1	72.1	87.8	99.7	100.4	100.0	97.1	92.0	81.0	63.1
Haul Truck 13/29	Flatbed Truck	105.8	58.1	72.1	87.8	99.7	100.4	100.0	97.1	92.0	81.0	63.1
Haul Truck 14/29	Flatbed Truck	105.8	58.1	72.1	87.8	99.7	100.4	100.0	97.1	92.0	81.0	63.1
Haul Truck 15/29	Flatbed Truck	105.8	58.1	72.1	87.8	99.7	100.4	100.0	97.1	92.0	81.0	63.1
Haul Truck 16/29	Flatbed Truck	105.8	58.1	72.1	87.8	99.7	100.4	100.0	97.1	92.0	81.0	63.1
Haul Truck 17/29	Flatbed Truck	105.8	58.1	72.1	87.8	99.7	100.4	100.0	97.1	92.0	81.0	63.1
Haul Truck 18/29	Flatbed Truck	105.8	58.1	72.1	87.8	99.7	100.4	100.0	97.1	92.0	81.0	63.1
Haul Truck 19/29	Flatbed Truck	105.8	58.1	72.1	87.8	99.7	100.4	100.0	97.1	92.0	81.0	63.1
Haul Truck 20/29	Flatbed Truck	105.8	58.1	72.1	87.8	99.7	100.4	100.0	97.1	92.0	81.0	63.1
Haul Truck 21/29	Flatbed Truck	105.8	58.1	72.1	87.8	99.7	100.4	100.0	97.1	92.0	81.0	63.1
Haul Truck 22/29	Flatbed Truck	105.8	58.1	72.1	87.8	99.7	100.4	100.0	97.1	92.0	81.0	63.1
Haul Truck 23/29	Flatbed Truck	105.8	58.1	72.1	87.8	99.7	100.4	100.0	97.1	92.0	81.0	63.1

/a/ If a specific piece of construction equipment provided by the Burbank-Glendale-Pasadena Airport Authority was not specifically listed in RCNM 2.0, a surrogate piece of equipment is identified.
 /b/ RCNM 2.0 full octave band source levels.

Demolition

BUR Terminal Reconstructor Construction Equipment	RCNM 2.0 Source /a/ 	Sound Power (Lw) dB(A)	31.5Hz	63Hz	125Hz	250Hz	500Hz	1kHz	2kHz	4kHz	8kHz	16kHz
			/b/ dB(A)	/b/ dB(A)	/b/ dB(A)	/b/ dB(A)	/b/ dB(A)	/b/ dB(A)	/b/ dB(A)	/b/ dB(A)	/b/ dB(A)	/b/ dB(A)
Haul Truck 24/29	Flatbed Truck	105.8	58.1	72.1	87.8	99.7	100.4	100.0	97.1	92.0	81.0	63.1
Haul Truck 25/29	Flatbed Truck	105.8	58.1	72.1	87.8	99.7	100.4	100.0	97.1	92.0	81.0	63.1
Haul Truck 26/29	Flatbed Truck	105.8	58.1	72.1	87.8	99.7	100.4	100.0	97.1	92.0	81.0	63.1
Haul Truck 27/29	Flatbed Truck	105.8	58.1	72.1	87.8	99.7	100.4	100.0	97.1	92.0	81.0	63.1
Haul Truck 28/29	Flatbed Truck	105.8	58.1	72.1	87.8	99.7	100.4	100.0	97.1	92.0	81.0	63.1
Haul Truck 29/29	Flatbed Truck	105.8	58.1	72.1	87.8	99.7	100.4	100.0	97.1	92.0	81.0	63.1
Pulverizer/Ramhoe 1/8	Excavator	118.3	71.7	86.2	107.2	108.9	115.1	111.5	108.4	102.2	93.3	79.3
Pulverizer/Ramhoe 2/8	Excavator	118.3	71.7	86.2	107.2	108.9	115.1	111.5	108.4	102.2	93.3	79.3
Pulverizer/Ramhoe 3/8	Excavator	118.3	71.7	86.2	107.2	108.9	115.1	111.5	108.4	102.2	93.3	79.3
Pulverizer/Ramhoe 4/8	Excavator	118.3	71.7	86.2	107.2	108.9	115.1	111.5	108.4	102.2	93.3	79.3
Pulverizer/Ramhoe 5/8	Excavator	118.3	71.7	86.2	107.2	108.9	115.1	111.5	108.4	102.2	93.3	79.3
Pulverizer/Ramhoe 6/8	Excavator	118.3	71.7	86.2	107.2	108.9	115.1	111.5	108.4	102.2	93.3	79.3
Pulverizer/Ramhoe 7/8	Excavator	118.3	71.7	86.2	107.2	108.9	115.1	111.5	108.4	102.2	93.3	79.3
Pulverizer/Ramhoe 8/8	Excavator	118.3	71.7	86.2	107.2	108.9	115.1	111.5	108.4	102.2	93.3	79.3
Skid Steer 1/4	Front End Loader (Cyclical)	113.0	61.7	79.3	90.6	103.3	110.1	104.7	104.5	101.7	93.7	74.3
Skid Steer 2/4	Front End Loader (Cyclical)	113.0	61.7	79.3	90.6	103.3	110.1	104.7	104.5	101.7	93.7	74.3
Skid Steer 3/4	Front End Loader (Cyclical)	113.0	61.7	79.3	90.6	103.3	110.1	104.7	104.5	101.7	93.7	74.3
Skid Steer 4/4	Front End Loader (Cyclical)	113.0	61.7	79.3	90.6	103.3	110.1	104.7	104.5	101.7	93.7	74.3
Water Truck 1/5	Water Spray Truck	103.6	60.5	75.7	82.5	97.2	97.4	98.9	94.5	89.7	85.0	73.4
Water Truck 2/5	Water Spray Truck	103.6	60.5	75.7	82.5	97.2	97.4	98.9	94.5	89.7	85.0	73.4
Water Truck 3/5	Water Spray Truck	103.6	60.5	75.7	82.5	97.2	97.4	98.9	94.5	89.7	85.0	73.4
Water Truck 4/5	Water Spray Truck	103.6	60.5	75.7	82.5	97.2	97.4	98.9	94.5	89.7	85.0	73.4
Water Truck 5/5	Water Spray Truck	103.6	60.5	75.7	82.5	97.2	97.4	98.9	94.5	89.7	85.0	73.4



--

/a/ If a specific piece of construction equipment provided by the Burbank-Glendale-Pasadena Airport Authority was not specifically listed in RCNM 2.0, a surrogate piece of equipment is identified.
 /b/ RCNM 2.0 full octave band source levels.

Excavation

BUR Terminal Reconstruction Construction Equipment	RCNM 2.0 Source /a/	Sound Power (Lw) dB(A)	31.5Hz	63Hz	125Hz	250Hz	500Hz	1kHz	2kHz	4kHz	8kHz	16kHz
			/b/ dB(A)	/b/ dB(A)	/b/ dB(A)	/b/ dB(A)	/b/ dB(A)	/b/ dB(A)	/b/ dB(A)	/b/ dB(A)	/b/ dB(A)	/b/ dB(A)
Excavation All Terrain Fork Lift 1/2	Front End Loader (Passby)	102.8	61.2	75.4	88.0	97.6	94.7	98.3	93.3	88.6	82.6	70.6
Excavation All Terrain Fork Lift 2/2	Front End Loader (Passby)	102.8	61.2	75.4	88.0	97.6	94.7	98.3	93.3	88.6	82.6	70.6
Excavation Boom Lift 1/2	Man Lift	104.9	57.8	87.3	85.5	99.5	98.2	100.2	94.6	87.7	81.3	69.1
Excavation Boom Lift 2/2	Man Lift	104.9	57.8	87.3	85.5	99.5	98.2	100.2	94.6	87.7	81.3	69.1
Excavation Chainsaw 1/1	Power Tools - Chainsaw	114.2	49.4	64.2	87.4	95.5	108.0	110.8	105.0	105.7	98.9	89.1
Excavation Crane 1/1	Crane	107.6	68.1	83.4	90.6	100.7	102.9	101.8	98.0	93.3	89.2	83.5
Excavation Delivery Truck 1/7	Flatbed Truck	105.8	58.1	72.1	87.8	99.7	100.4	100.0	97.1	92.0	81.0	63.1
Excavation Delivery Truck 2/7	Flatbed Truck	105.8	58.1	72.1	87.8	99.7	100.4	100.0	97.1	92.0	81.0	63.1
Excavation Delivery Truck 3/7	Flatbed Truck	105.8	58.1	72.1	87.8	99.7	100.4	100.0	97.1	92.0	81.0	63.1
Excavation Delivery Truck 4/7	Flatbed Truck	105.8	58.1	72.1	87.8	99.7	100.4	100.0	97.1	92.0	81.0	63.1
Excavation Delivery Truck 5/7	Flatbed Truck	105.8	58.1	72.1	87.8	99.7	100.4	100.0	97.1	92.0	81.0	63.1
Excavation Delivery Truck 6/7	Flatbed Truck	105.8	58.1	72.1	87.8	99.7	100.4	100.0	97.1	92.0	81.0	63.1
Excavation Delivery Truck 7/7	Flatbed Truck	105.8	58.1	72.1	87.8	99.7	100.4	100.0	97.1	92.0	81.0	63.1
Excavation Dump Truck 1/10	Dump Truck (Passby)	104.7	65.9	81.2	84.6	99.4	96.5	100.3	95.6	91.2	83.4	73.7
Excavation Dump Truck 2/10	Dump Truck (Passby)	104.7	65.9	81.2	84.6	99.4	96.5	100.3	95.6	91.2	83.4	73.7
Excavation Dump Truck 3/10	Dump Truck (Passby)	104.7	65.9	81.2	84.6	99.4	96.5	100.3	95.6	91.2	83.4	73.7
Excavation Dump Truck 4/10	Dump Truck (Passby)	104.7	65.9	81.2	84.6	99.4	96.5	100.3	95.6	91.2	83.4	73.7
Excavation Dump Truck 5/10	Dump Truck (Passby)	104.7	65.9	81.2	84.6	99.4	96.5	100.3	95.6	91.2	83.4	73.7
Excavation Dump Truck 6/10	Dump Truck (Passby)	104.7	65.9	81.2	84.6	99.4	96.5	100.3	95.6	91.2	83.4	73.7
Excavation Dump Truck 7/10	Dump Truck (Passby)	104.7	65.9	81.2	84.6	99.4	96.5	100.3	95.6	91.2	83.4	73.7
Excavation Dump Truck 8/10	Dump Truck (Passby)	104.7	65.9	81.2	84.6	99.4	96.5	100.3	95.6	91.2	83.4	73.7
Excavation Dump Truck 9/10	Dump Truck (Passby)	104.7	65.9	81.2	84.6	99.4	96.5	100.3	95.6	91.2	83.4	73.7
Excavation Dump Truck 10/10	Dump Truck (Passby)	104.7	65.9	81.2	84.6	99.4	96.5	100.3	95.6	91.2	83.4	73.7
Excavation Excavator 1/2	Excavator	118.3	71.7	86.2	107.2	108.9	115.1	111.5	108.4	102.2	93.3	79.3
Excavation Excavator 2/2	Excavator	118.3	71.7	86.2	107.2	108.9	115.1	111.5	108.4	102.2	93.3	79.3
Excavation Generator 1/3	Generator	99.4	53.4	72.1	84.8	94.1	95.6	91.2	88.0	83.8	76.5	64.9
Excavation Generator 2/3	Generator	99.4	53.4	72.1	84.8	94.1	95.6	91.2	88.0	83.8	76.5	64.9
Excavation Generator 3/3	Generator	99.4	53.4	72.1	84.8	94.1	95.6	91.2	88.0	83.8	76.5	64.9
Excavation Loader 1/1	Front End Loader (Cyclical)	113.0	61.7	79.3	90.6	103.3	110.1	104.7	104.5	101.7	93.7	74.3
Excavation Pumps 1/1	Pump	105.5	68.8	78.8	88.5	96.3	101.4	98.7	96.0	88.5	80.1	
Excavation Roller 1/1	Compactor (Roller)	114.0	79.7	95.9	95.5	109.7	107.1	108.8	101.9	97.3	88.4	75.6
Excavation Tie Back Drill 1/1	Directional Drill Rig	111.2	54.2	81.3	93.6	90.4	94.3	99.3	104.7	108.6	101.9	89.0
Excavation Tow Behind Air Compressor 1/2	Compressor	98.4	56.8	82.4	87.1	92.5	90.9	92.6	88.8	85.7	82.3	76.7
Excavation Tow Behind Air Compressor 2/2	Compressor	98.4	56.8	82.4	87.1	92.5	90.9	92.6	88.8	85.7	82.3	76.7
Excavation Vibrator/Pile Hammer 1/2	Vibratory Pile Driver	136.1	79.3	111.1	122.4	119.2	126.5	128.0	131.4	130.9	120.4	102.9
Excavation Vibrator/Pile Hammer 2/2	Vibratory Pile Driver	136.1	79.3	111.1	122.4	119.2	126.5	128.0	131.4	130.9	120.4	102.9

/a/ If a specific piece of construction equipment provided by the Burbank-Glendale-Pasadena Airport Authority was not specifically listed in RCNM 2.0, a surrogate piece of equipment is identified.
 /b/ RCNM 2.0 full octave band source levels.



Excavation

BUR Terminal Reconstructor Construction Equipment	RCNM 2.0 Source /a/	Sound Power (Lw) dB(A)	31.5Hz /b/ dB(A)	63Hz /b/ dB(A)	125Hz /b/ dB(A)	250Hz /b/ dB(A)	500Hz /b/ dB(A)	1kHz /b/ dB(A)	2kHz /b/ dB(A)	4kHz /b/ dB(A)	8kHz /b/ dB(A)	16kHz /b/ dB(A)
Excavation Welder 1/1	Welding Machine	103.7	55.7	76.7	83.3	93.5	98.6	99.0	96.2	91.9	82.9	69.4



(This area is intentionally left blank for additional data or notes.)												
---	--	--	--	--	--	--	--	--	--	--	--	--

/a/ If a specific piece of construction equipment provided by the Burbank-Glendale-Pasadena Airport Authority was not specifically listed in RCNM 2.0, a surrogate piece of equipment is identified.
 /b/ RCNM 2.0 full octave band source levels.

Utilities and Paving Construction Landside

BUR Terminal Reconstructor Construction Equipment	RCNM 2.0 Source /a/	Sound Power (Lw) dB(A)	31.5Hz /b/ dB(A)	63Hz /b/ dB(A)	125Hz /b/ dB(A)	250Hz /b/ dB(A)	500Hz /b/ dB(A)	1kHz /b/ dB(A)	2kHz /b/ dB(A)	4kHz /b/ dB(A)	8kHz /b/ dB(A)	16kHz /b/ dB(A)
Paving Land All Skid Steer 1/2	Front End Loader (Cyclical)	113.0	61.7	79.3	90.6	103.3	110.1	104.7	104.5	101.7	93.7	74.3
Paving Land All Skid Steer 2/2	Front End Loader (Cyclical)	113.0	61.7	79.3	90.6	103.3	110.1	104.7	104.5	101.7	93.7	74.3
Paving Land All Terrain Fork Lift 1/1	Front End Loader (Passby)	102.8	61.2	75.4	88.0	97.6	94.7	98.3	93.3	88.6	82.6	70.6
Paving Land Asphalt Paver 1/1	Paving - Asphalt (Paver + Dump Truck)	113.4	63.3	75.8	85.7	101.9	108.6	108.8	104.0	104.1	93.5	79.8
Paving Land Belt Loader 1/1	Generator	99.4	53.4	72.1	84.8	94.1	95.6	91.2	88.0	83.8	76.5	64.9
Paving Land Compactor 1/4	Compactor (Plate)	106.2	52.9	70.3	87.6	94.0	104.9	96.2	91.1	93.4	88.5	77.2
Paving Land Compactor 2/4	Compactor (Plate)	106.2	52.9	70.3	87.6	94.0	104.9	96.2	91.1	93.4	88.5	77.2
Paving Land Compactor 3/4	Compactor (Plate)	106.2	52.9	70.3	87.6	94.0	104.9	96.2	91.1	93.4	88.5	77.2
Paving Land Compactor 4/4	Compactor (Plate)	106.2	52.9	70.3	87.6	94.0	104.9	96.2	91.1	93.4	88.5	77.2
Paving Land Conc/Asphalt Truck 1/6	Concrete Mixer Truck	114.0	62.2	79.2	92.5	106.0	109.1	106.3	107.6	103.7	96.1	84.9
Paving Land Conc/Asphalt Truck 2/6	Concrete Mixer Truck	114.0	62.2	79.2	92.5	106.0	109.1	106.3	107.6	103.7	96.1	84.9
Paving Land Conc/Asphalt Truck 3/6	Concrete Mixer Truck	114.0	62.2	79.2	92.5	106.0	109.1	106.3	107.6	103.7	96.1	84.9
Paving Land Conc/Asphalt Truck 4/6	Concrete Mixer Truck	114.0	62.2	79.2	92.5	106.0	109.1	106.3	107.6	103.7	96.1	84.9
Paving Land Conc/Asphalt Truck 5/6	Concrete Mixer Truck	114.0	62.2	79.2	92.5	106.0	109.1	106.3	107.6	103.7	96.1	84.9
Paving Land Conc/Asphalt Truck 6/6	Concrete Mixer Truck	114.0	62.2	79.2	92.5	106.0	109.1	106.3	107.6	103.7	96.1	84.9
Paving Land Concrete Cure Machine 1/1	Drum Mixer	102.2	56.1	73.5	85.9	85.9	99.6	92.2	94.9	91.3	87.1	70.4
Paving Land Concrete Paver 1/1	Paving - Concrete (Placer + Slipform Pav)	122.4	62.6	79.1	120.6	106.1	114.5	111.4	109.8	104.4	97.6	80.0
Paving Land Concrete Truck 1/8	Concrete Mixer Truck	114.0	62.2	79.2	92.5	106.0	109.1	106.3	107.6	103.7	96.1	84.9
Paving Land Concrete Truck 2/8	Concrete Mixer Truck	114.0	62.2	79.2	92.5	106.0	109.1	106.3	107.6	103.7	96.1	84.9
Paving Land Concrete Truck 3/8	Concrete Mixer Truck	114.0	62.2	79.2	92.5	106.0	109.1	106.3	107.6	103.7	96.1	84.9
Paving Land Concrete Truck 4/8	Concrete Mixer Truck	114.0	62.2	79.2	92.5	106.0	109.1	106.3	107.6	103.7	96.1	84.9
Paving Land Concrete Truck 5/8	Concrete Mixer Truck	114.0	62.2	79.2	92.5	106.0	109.1	106.3	107.6	103.7	96.1	84.9
Paving Land Concrete Truck 6/8	Concrete Mixer Truck	114.0	62.2	79.2	92.5	106.0	109.1	106.3	107.6	103.7	96.1	84.9
Paving Land Concrete Truck 7/8	Concrete Mixer Truck	114.0	62.2	79.2	92.5	106.0	109.1	106.3	107.6	103.7	96.1	84.9
Paving Land Concrete Truck 8/8	Concrete Mixer Truck	114.0	62.2	79.2	92.5	106.0	109.1	106.3	107.6	103.7	96.1	84.9
Paving Land Delivery Truck 1/2	Flatbed Truck	105.8	58.1	72.1	87.8	99.7	100.4	100.0	97.1	92.0	81.0	63.1
Paving Land Delivery Truck 2/2	Flatbed Truck	105.8	58.1	72.1	87.8	99.7	100.4	100.0	97.1	92.0	81.0	63.1
Paving Land Demo Saw 1/1	Power Tools - Reciprocating Saw	97.6	42.8	59.1	62.7	76.1	89.5	88.1	94.3	90.3	85.6	72.3

/a/ If a specific piece of construction equipment provided by the Burbank-Glendale-Pasadena Airport Authority was not specifically listed in RCNM 2.0, a surrogate piece of equipment is identified.
 /b/ RCNM 2.0 full octave band source levels.



Utilities and Paving Construction Landside

BUR Terminal Reconstruction Construction Equipment	RCNM 2.0 Source /a/ /b/	Sound Power (Lw) dB(A)	31.5Hz	63Hz	125Hz	250Hz	500Hz	1kHz	2kHz	4kHz	8kHz	16kHz
			/b/ dB(A)	/b/ dB(A)	/b/ dB(A)	/b/ dB(A)	/b/ dB(A)	/b/ dB(A)	/b/ dB(A)	/b/ dB(A)	/b/ dB(A)	/b/ dB(A)
Paving Land Dowel Drill 1/1	Rock Drill	126.9	66.6	86.7	91.7	105.8	117.6	120.5	120.5	121.9	116.8	101.5
Paving Land Dump Truck 1/20	Dump Truck (Passby)	104.7	65.9	81.2	84.6	99.4	96.5	100.3	95.6	91.2	83.4	73.7
Paving Land Dump Truck 2/20	Dump Truck (Passby)	104.7	65.9	81.2	84.6	99.4	96.5	100.3	95.6	91.2	83.4	73.7
Paving Land Dump Truck 3/20	Dump Truck (Passby)	104.7	65.9	81.2	84.6	99.4	96.5	100.3	95.6	91.2	83.4	73.7
Paving Land Dump Truck 4/20	Dump Truck (Passby)	104.7	65.9	81.2	84.6	99.4	96.5	100.3	95.6	91.2	83.4	73.7
Paving Land Dump Truck 5/20	Dump Truck (Passby)	104.7	65.9	81.2	84.6	99.4	96.5	100.3	95.6	91.2	83.4	73.7
Paving Land Dump Truck 6/20	Dump Truck (Passby)	104.7	65.9	81.2	84.6	99.4	96.5	100.3	95.6	91.2	83.4	73.7
Paving Land Dump Truck 7/20	Dump Truck (Passby)	104.7	65.9	81.2	84.6	99.4	96.5	100.3	95.6	91.2	83.4	73.7
Paving Land Dump Truck 8/20	Dump Truck (Passby)	104.7	65.9	81.2	84.6	99.4	96.5	100.3	95.6	91.2	83.4	73.7
Paving Land Dump Truck 9/20	Dump Truck (Passby)	104.7	65.9	81.2	84.6	99.4	96.5	100.3	95.6	91.2	83.4	73.7
Paving Land Dump Truck 10/20	Dump Truck (Passby)	104.7	65.9	81.2	84.6	99.4	96.5	100.3	95.6	91.2	83.4	73.7
Paving Land Dump Truck 11/20	Dump Truck (Passby)	104.7	65.9	81.2	84.6	99.4	96.5	100.3	95.6	91.2	83.4	73.7
Paving Land Dump Truck 12/20	Dump Truck (Passby)	104.7	65.9	81.2	84.6	99.4	96.5	100.3	95.6	91.2	83.4	73.7
Paving Land Dump Truck 13/20	Dump Truck (Passby)	104.7	65.9	81.2	84.6	99.4	96.5	100.3	95.6	91.2	83.4	73.7
Paving Land Dump Truck 14/20	Dump Truck (Passby)	104.7	65.9	81.2	84.6	99.4	96.5	100.3	95.6	91.2	83.4	73.7
Paving Land Dump Truck 15/20	Dump Truck (Passby)	104.7	65.9	81.2	84.6	99.4	96.5	100.3	95.6	91.2	83.4	73.7
Paving Land Dump Truck 16/20	Dump Truck (Passby)	104.7	65.9	81.2	84.6	99.4	96.5	100.3	95.6	91.2	83.4	73.7
Paving Land Dump Truck 17/20	Dump Truck (Passby)	104.7	65.9	81.2	84.6	99.4	96.5	100.3	95.6	91.2	83.4	73.7
Paving Land Dump Truck 18/20	Dump Truck (Passby)	104.7	65.9	81.2	84.6	99.4	96.5	100.3	95.6	91.2	83.4	73.7
Paving Land Dump Truck 19/20	Dump Truck (Passby)	104.7	65.9	81.2	84.6	99.4	96.5	100.3	95.6	91.2	83.4	73.7
Paving Land Dump Truck 20/20	Dump Truck (Passby)	104.7	65.9	81.2	84.6	99.4	96.5	100.3	95.6	91.2	83.4	73.7
Paving Land Excavator 1/3	Excavator	118.3	71.7	86.2	107.2	108.9	115.1	111.5	108.4	102.2	93.3	79.3
Paving Land Excavator 2/3	Excavator	118.3	71.7	86.2	107.2	108.9	115.1	111.5	108.4	102.2	93.3	79.3
Paving Land Excavator 3/3	Excavator	118.3	71.7	86.2	107.2	108.9	115.1	111.5	108.4	102.2	93.3	79.3
Paving Land Form Slip 1/1	Light Tower	93.4	60.5	71.0	77.3	88.4	86.7	86.8	85.5	80.9	73.5	60.7
Paving Land Grader 1/1	Grader (Passby)	110.1	68.8	73.6	85.7	95.6	109.2	98.5	98.2	90.9	81.2	68.7
Paving Land Jack Hammer 1/2	Power Tools - Jackhammer	127.0	68.9	85.6	95.6	103.0	108.0	122.4	124.0	116.7	113.1	101.4
Paving Land Jack Hammer 2/2	Power Tools - Jackhammer	127.0	68.9	85.6	95.6	103.0	108.0	122.4	124.0	116.7	113.1	101.4
Paving Land Joint Saw 1/1	Concrete Saw	119.7	59.8	79.9	88.6	95.3	102.1	109.8	113.6	114.4	114.6	103.4
Paving Land Loader 1/2	Front End Loader (Cyclical)	113.0	61.7	79.3	90.6	103.3	110.1	104.7	104.5	101.7	93.7	74.3

/a/ If a specific piece of construction equipment provided by the Burbank-Glendale-Pasadena Airport Authority was not specifically listed in RCNM 2.0, a surrogate piece of equipment is identified.
 /b/ RCNM 2.0 full octave band source levels.



Utilities and Paving Construction Landside

BUR Terminal Reconstructor Construction Equipment	RCNM 2.0 Source /a/	Sound Power (Lw) dB(A)	31.5Hz /b/ dB(A)	63Hz /b/ dB(A)	125Hz /b/ dB(A)	250Hz /b/ dB(A)	500Hz /b/ dB(A)	1kHz /b/ dB(A)	2kHz /b/ dB(A)	4kHz /b/ dB(A)	8kHz /b/ dB(A)	16kHz /b/ dB(A)
Paving Land Loader 2/2	Front End Loader (Cyclical)	113.0	61.7	79.3	90.6	103.3	110.1	104.7	104.5	101.7	93.7	74.3
Paving Land Paver 1/1	Paving - Concrete (Placer + Slipform Pav)	122.4	62.6	79.1	120.6	106.1	114.5	111.4	109.8	104.4	97.6	80.0
Paving Land Roller 1/2	Compactor (Roller)	114.0	79.7	95.9	95.5	109.7	107.1	108.8	101.9	97.3	88.4	75.6
Paving Land Roller 2/2	Compactor (Roller)	114.0	79.7	95.9	95.5	109.7	107.1	108.8	101.9	97.3	88.4	75.6
Paving Land Roller Screed 1/1	Paving - Concrete (Triple Roller Tube Pa)	120.0	59.2	80.0	92.5	103.5	106.7	114.8	117.1	110.0	102.5	88.1
Paving Land Welder 1/1	Welding Machine	103.7	55.7	76.7	83.3	93.5	98.6	99.0	96.2	91.9	82.9	69.4



/a/ If a specific piece of construction equipment provided by the Burbank-Glendale-Pasadena Airport Authority was not specifically listed in RCNM 2.0, a surrogate piece of equipment is identified.
 /b/ RCNM 2.0 full octave band source levels.

Utilities and Paving Construction Airside



BUR Terminal Reconstruction Construction Equipment	RCNM 2.0 Source /a/	Sound Power (Lw) dB(A)	31.5Hz /b/ dB(A)	63Hz /b/ dB(A)	125Hz /b/ dB(A)	250Hz /b/ dB(A)	500Hz /b/ dB(A)	1kHz /b/ dB(A)	2kHz /b/ dB(A)	4kHz /b/ dB(A)	8kHz /b/ dB(A)	16kHz /b/ dB(A)
Utilities & Paving Air Compactor 1/4	Compactor (Plate)	106.2	52.9	70.3	87.6	94.0	104.9	96.2	91.1	93.4	88.5	77.2
Utilities & Paving Air Compactor 2/4	Compactor (Plate)	106.2	52.9	70.3	87.6	94.0	104.9	96.2	91.1	93.4	88.5	77.2
Utilities & Paving Air Compactor 3/4	Compactor (Plate)	106.2	52.9	70.3	87.6	94.0	104.9	96.2	91.1	93.4	88.5	77.2
Utilities & Paving Air Compactor 4/4	Compactor (Plate)	106.2	52.9	70.3	87.6	94.0	104.9	96.2	91.1	93.4	88.5	77.2
Utilities & Paving Air Concrete Truck 1/8	Concrete Mixer Truck	114.0	62.2	79.2	92.5	106.0	109.1	106.3	107.6	103.7	96.1	84.9
Utilities & Paving Air Concrete Truck 2/8	Concrete Mixer Truck	114.0	62.2	79.2	92.5	106.0	109.1	106.3	107.6	103.7	96.1	84.9
Utilities & Paving Air Concrete Truck 3/8	Concrete Mixer Truck	114.0	62.2	79.2	92.5	106.0	109.1	106.3	107.6	103.7	96.1	84.9
Utilities & Paving Air Concrete Truck 4/8	Concrete Mixer Truck	114.0	62.2	79.2	92.5	106.0	109.1	106.3	107.6	103.7	96.1	84.9
Utilities & Paving Air Concrete Truck 5/8	Concrete Mixer Truck	114.0	62.2	79.2	92.5	106.0	109.1	106.3	107.6	103.7	96.1	84.9
Utilities & Paving Air Concrete Truck 6/8	Concrete Mixer Truck	114.0	62.2	79.2	92.5	106.0	109.1	106.3	107.6	103.7	96.1	84.9
Utilities & Paving Air Concrete Truck 7/8	Concrete Mixer Truck	114.0	62.2	79.2	92.5	106.0	109.1	106.3	107.6	103.7	96.1	84.9
Utilities & Paving Air Concrete Truck 8/8	Concrete Mixer Truck	114.0	62.2	79.2	92.5	106.0	109.1	106.3	107.6	103.7	96.1	84.9
Utilities & Paving Air Delivery Truck 1/2	Flatbed Truck	105.8	58.1	72.1	87.8	99.7	100.4	100.0	97.1	92.0	81.0	63.1
Utilities & Paving Air Delivery Truck 2/2	Flatbed Truck	105.8	58.1	72.1	87.8	99.7	100.4	100.0	97.1	92.0	81.0	63.1
Utilities & Paving Air Dump Truck 1/20	Dump Truck (Passby)	104.7	65.9	81.2	84.6	99.4	96.5	100.3	95.6	91.2	83.4	73.7
Utilities & Paving Air Dump Truck 2/20	Dump Truck (Passby)	104.7	65.9	81.2	84.6	99.4	96.5	100.3	95.6	91.2	83.4	73.7
Utilities & Paving Air Dump Truck 3/20	Dump Truck (Passby)	104.7	65.9	81.2	84.6	99.4	96.5	100.3	95.6	91.2	83.4	73.7
Utilities & Paving Air Dump Truck 4/20	Dump Truck (Passby)	104.7	65.9	81.2	84.6	99.4	96.5	100.3	95.6	91.2	83.4	73.7
Utilities & Paving Air Dump Truck 5/20	Dump Truck (Passby)	104.7	65.9	81.2	84.6	99.4	96.5	100.3	95.6	91.2	83.4	73.7
Utilities & Paving Air Dump Truck 6/20	Dump Truck (Passby)	104.7	65.9	81.2	84.6	99.4	96.5	100.3	95.6	91.2	83.4	73.7
Utilities & Paving Air Dump Truck 7/20	Dump Truck (Passby)	104.7	65.9	81.2	84.6	99.4	96.5	100.3	95.6	91.2	83.4	73.7
Utilities & Paving Air Dump Truck 8/20	Dump Truck (Passby)	104.7	65.9	81.2	84.6	99.4	96.5	100.3	95.6	91.2	83.4	73.7
Utilities & Paving Air Dump Truck 9/20	Dump Truck (Passby)	104.7	65.9	81.2	84.6	99.4	96.5	100.3	95.6	91.2	83.4	73.7
Utilities & Paving Air Dump Truck 10/20	Dump Truck (Passby)	104.7	65.9	81.2	84.6	99.4	96.5	100.3	95.6	91.2	83.4	73.7
Utilities & Paving Air Dump Truck 11/20	Dump Truck (Passby)	104.7	65.9	81.2	84.6	99.4	96.5	100.3	95.6	91.2	83.4	73.7
Utilities & Paving Air Dump Truck 12/20	Dump Truck (Passby)	104.7	65.9	81.2	84.6	99.4	96.5	100.3	95.6	91.2	83.4	73.7

/a/ If a specific piece of construction equipment provided by the Burbank-Glendale-Pasadena Airport Authority was not specifically listed in RCNM 2.0, a surrogate piece of equipment is identified.
 /b/ RCNM 2.0 full octave band source levels.

Utilities and Paving Construction Airside



BUR Terminal Reconstruction Construction Equipment	RCNM 2.0 Source /a/	Sound Power (Lw) dB(A)	31.5Hz /b/ dB(A)	63Hz /b/ dB(A)	125Hz /b/ dB(A)	250Hz /b/ dB(A)	500Hz /b/ dB(A)	1kHz /b/ dB(A)	2kHz /b/ dB(A)	4kHz /b/ dB(A)	8kHz /b/ dB(A)	16kHz /b/ dB(A)
Utilities & Paving Air Dump Truck 13/20	Dump Truck (Passby)	104.7	65.9	81.2	84.6	99.4	96.5	100.3	95.6	91.2	83.4	73.7
Utilities & Paving Air Dump Truck 14/20	Dump Truck (Passby)	104.7	65.9	81.2	84.6	99.4	96.5	100.3	95.6	91.2	83.4	73.7
Utilities & Paving Air Dump Truck 15/20	Dump Truck (Passby)	104.7	65.9	81.2	84.6	99.4	96.5	100.3	95.6	91.2	83.4	73.7
Utilities & Paving Air Dump Truck 16/20	Dump Truck (Passby)	104.7	65.9	81.2	84.6	99.4	96.5	100.3	95.6	91.2	83.4	73.7
Utilities & Paving Air Dump Truck 17/20	Dump Truck (Passby)	104.7	65.9	81.2	84.6	99.4	96.5	100.3	95.6	91.2	83.4	73.7
Utilities & Paving Air Dump Truck 18/20	Dump Truck (Passby)	104.7	65.9	81.2	84.6	99.4	96.5	100.3	95.6	91.2	83.4	73.7
Utilities & Paving Air Dump Truck 19/20	Dump Truck (Passby)	104.7	65.9	81.2	84.6	99.4	96.5	100.3	95.6	91.2	83.4	73.7
Utilities & Paving Air Dump Truck 20/20	Dump Truck (Passby)	104.7	65.9	81.2	84.6	99.4	96.5	100.3	95.6	91.2	83.4	73.7
Utilities & Paving Air Excavator 1/3	Excavator	118.3	71.7	86.2	107.2	108.9	115.1	111.5	108.4	102.2	93.3	79.3
Utilities & Paving Air Excavator 2/3	Excavator	118.3	71.7	86.2	107.2	108.9	115.1	111.5	108.4	102.2	93.3	79.3
Utilities & Paving Air Excavator 3/3	Excavator	118.3	71.7	86.2	107.2	108.9	115.1	111.5	108.4	102.2	93.3	79.3
Utilities & Paving Air Grader 1/1	Grader (Passby)	110.1	68.8	73.6	85.7	95.6	109.2	98.5	98.2	90.9	81.2	68.7
Utilities & Paving Air Paver 1/1	Paving - Concrete (Placer + Slipform Pav)	122.4	62.6	79.1	120.6	106.1	114.5	111.4	109.8	104.4	97.6	80.0
Utilities & Paving Air Roller 1/2	Compactor (Roller)	114.0	79.7	95.9	95.5	109.7	107.1	108.8	101.9	97.3	88.4	75.6
Utilities & Paving Air Roller 2/2	Compactor (Roller)	114.0	79.7	95.9	95.5	109.7	107.1	108.8	101.9	97.3	88.4	75.6
Utilities & Paving Air Skid Steer 1/2	Front End Loader (Cyclical)	113.0	61.7	79.3	90.6	103.3	110.1	104.7	104.5	101.7	93.7	74.3
Utilities & Paving Air Skid Steer 2/2	Front End Loader (Cyclical)	113.0	61.7	79.3	90.6	103.3	110.1	104.7	104.5	101.7	93.7	74.3
Utilities & Paving All Form Slip 1/1	Light Tower	93.4	60.5	71.0	77.3	88.4	86.7	86.8	85.5	80.9	73.5	60.7
Utilities & Paving All Terrain Forklift 1/1	Front End Loader (Passby)	102.8	61.2	75.4	88.0	97.6	94.7	98.3	93.3	88.6	82.6	70.6
Utilities & Paving Asphalt Paver 1/1	Paving - Asphalt (Paver + Dump Truck)	113.4	63.3	75.8	85.7	101.9	108.6	108.8	104.0	104.1	93.5	79.8
Utilities & Paving Belt Loader 1/1	Generator	99.4	53.4	72.1	84.8	94.1	95.6	91.2	88.0	83.8	76.5	64.9
Utilities & Paving Conc/Asphalt Truck 1/6	Concrete Mixer Truck	114.0	62.2	79.2	92.5	106.0	109.1	106.3	107.6	103.7	96.1	84.9
Utilities & Paving Conc/Asphalt Truck 2/6	Concrete Mixer Truck	114.0	62.2	79.2	92.5	106.0	109.1	106.3	107.6	103.7	96.1	84.9
Utilities & Paving Conc/Asphalt Truck 3/6	Concrete Mixer Truck	114.0	62.2	79.2	92.5	106.0	109.1	106.3	107.6	103.7	96.1	84.9
Utilities & Paving Conc/Asphalt Truck 4/6	Concrete Mixer Truck	114.0	62.2	79.2	92.5	106.0	109.1	106.3	107.6	103.7	96.1	84.9

/a/ If a specific piece of construction equipment provided by the Burbank-Glendale-Pasadena Airport Authority was not specifically listed in RCNM 2.0, a surrogate piece of equipment is identified.
 /b/ RCNM 2.0 full octave band source levels.

Utilities and Paving Construction Airside

BUR Terminal Reconstructor Construction Equipment	RCNM 2.0 Source /a/	Sound Power (Lw) dB(A)	31.5Hz /b/ dB(A)	63Hz /b/ dB(A)	125Hz /b/ dB(A)	250Hz /b/ dB(A)	500Hz /b/ dB(A)	1kHz /b/ dB(A)	2kHz /b/ dB(A)	4kHz /b/ dB(A)	8kHz /b/ dB(A)	16kHz /b/ dB(A)
Utilities & Paving Conc/Asphalt Truck 5/6	Concrete Mixer Truck	114.0	62.2	79.2	92.5	106.0	109.1	106.3	107.6	103.7	96.1	84.9
Utilities & Paving Conc/Asphalt Truck 6/6	Concrete Mixer Truck	114.0	62.2	79.2	92.5	106.0	109.1	106.3	107.6	103.7	96.1	84.9
Utilities & Paving Conc/Asphalt Truck 6/6	Concrete Mixer Truck	114.0	62.2	79.2	92.5	106.0	109.1	106.3	107.6	103.7	96.1	84.9
Utilities & Paving Concrete Paver 1/1	Paving - Concrete (Placer + Slipform Pav	122.4	62.6	79.1	120.6	106.1	114.5	111.4	109.8	104.4	97.6	80.0
Utilities & Paving Cure Machine 1/1	Drum Mixer	102.2	56.1	73.5	85.9	85.9	99.6	92.2	94.9	91.3	87.1	70.4
Utilities & Paving Demo Saw 1/1	Power Tools - Reciprocating Saw	97.6	42.8	59.1	62.7	76.1	89.5	88.1	94.3	90.3	85.6	72.3
Utilities & Paving Dowel Drill 1/2	Rock Drill	126.9	66.6	86.7	91.7	105.8	117.6	120.5	120.5	121.9	116.8	101.5
Utilities & Paving Dowel Drill 2/2	Rock Drill	126.9	66.6	86.7	91.7	105.8	117.6	120.5	120.5	121.9	116.8	101.5
Utilities & Paving Jack Hammer 1/2	Power Tools - Jackhammer	127.0	68.9	85.6	95.6	103.0	108.0	122.4	124.0	116.7	113.1	101.4
Utilities & Paving Jack Hammer 2/2	Power Tools - Jackhammer	127.0	68.9	85.6	95.6	103.0	108.0	122.4	124.0	116.7	113.1	101.4
Utilities & Paving Joint Saw 1/1	Concrete Saw	119.7	59.8	79.9	88.6	95.3	102.1	109.8	113.6	114.4	114.6	103.4
Utilities & Paving Loader 1/2	Front End Loader (Cyclical)	113.0	61.7	79.3	90.6	103.3	110.1	104.7	104.5	101.7	93.7	74.3
Utilities & Paving Loader 2/2	Front End Loader (Cyclical)	113.0	61.7	79.3	90.6	103.3	110.1	104.7	104.5	101.7	93.7	74.3
Utilities & Paving Roller Screen 1/1	Paving - Concrete (Triple Roller Tube Pa	120.0	59.2	80.0	92.5	103.5	106.7	114.8	117.1	110.0	102.5	88.1
Utilities & Paving Welder 1/1	Welding Machine	103.7	55.7	76.7	83.3	93.5	98.6	99.0	96.2	91.9	82.9	69.4



/a/ If a specific piece of construction equipment provided by the Burbank-Glendale-Pasadena Airport Authority was not specifically listed in RCNM 2.0, a surrogate piece of equipment is identified.
 /b/ RCNM 2.0 full octave band source levels.

Garage Structure Construction

BUR Terminal Reconstruction Construction Equipment	RCNM 2.0 Source /a/	Sound Power (Lw) dB(A)	31.5Hz	63Hz	125Hz	250Hz	500Hz	1kHz	2kHz	4kHz	8kHz	16kHz
			/b/ dB(A)	/b/ dB(A)	/b/ dB(A)	/b/ dB(A)	/b/ dB(A)	/b/ dB(A)	/b/ dB(A)	/b/ dB(A)	/b/ dB(A)	/b/ dB(A)
Garage Dump All Terrain Forklift 1/3	Front End Loader (Passby)	102.8	61.2	75.4	88.0	97.6	94.7	98.3	93.3	88.6	82.6	70.6
Garage Dump All Terrain Forklift 2/3	Front End Loader (Passby)	102.8	61.2	75.4	88.0	97.6	94.7	98.3	93.3	88.6	82.6	70.6
Garage Dump All Terrain Forklift 3/3	Front End Loader (Passby)	102.8	61.2	75.4	88.0	97.6	94.7	98.3	93.3	88.6	82.6	70.6
Garage Dump Compactor 1/2	Flatbed Truck	105.8	58.1	72.1	87.8	99.7	100.4	100.0	97.1	92.0	81.0	63.1
Garage Dump Compactor 2/2	Flatbed Truck	105.8	58.1	72.1	87.8	99.7	100.4	100.0	97.1	92.0	81.0	63.1
Garage Dump Concrete Truck 1/1	Pump	105.5	68.8	78.8	88.5	96.3	96.3	101.4	98.7	96.0	88.5	80.1
Garage Dump Concrete Truck 1/15	Concrete Mixer Truck	114.0	62.2	79.2	92.5	106.0	109.1	106.3	107.6	103.7	96.1	84.9
Garage Dump Concrete Truck 2/15	Concrete Mixer Truck	114.0	62.2	79.2	92.5	106.0	109.1	106.3	107.6	103.7	96.1	84.9
Garage Dump Concrete Truck 3/15	Concrete Mixer Truck	114.0	62.2	79.2	92.5	106.0	109.1	106.3	107.6	103.7	96.1	84.9
Garage Dump Concrete Truck 4/15	Concrete Mixer Truck	114.0	62.2	79.2	92.5	106.0	109.1	106.3	107.6	103.7	96.1	84.9
Garage Dump Concrete Truck 5/15	Concrete Mixer Truck	114.0	62.2	79.2	92.5	106.0	109.1	106.3	107.6	103.7	96.1	84.9
Garage Dump Concrete Truck 6/15	Concrete Mixer Truck	114.0	62.2	79.2	92.5	106.0	109.1	106.3	107.6	103.7	96.1	84.9
Garage Dump Concrete Truck 7/15	Concrete Mixer Truck	114.0	62.2	79.2	92.5	106.0	109.1	106.3	107.6	103.7	96.1	84.9
Garage Dump Concrete Truck 8/15	Concrete Mixer Truck	114.0	62.2	79.2	92.5	106.0	109.1	106.3	107.6	103.7	96.1	84.9
Garage Dump Concrete Truck 9/15	Concrete Mixer Truck	114.0	62.2	79.2	92.5	106.0	109.1	106.3	107.6	103.7	96.1	84.9
Garage Dump Concrete Truck 10/15	Concrete Mixer Truck	114.0	62.2	79.2	92.5	106.0	109.1	106.3	107.6	103.7	96.1	84.9
Garage Dump Concrete Truck 11/15	Concrete Mixer Truck	114.0	62.2	79.2	92.5	106.0	109.1	106.3	107.6	103.7	96.1	84.9
Garage Dump Concrete Truck 12/15	Concrete Mixer Truck	114.0	62.2	79.2	92.5	106.0	109.1	106.3	107.6	103.7	96.1	84.9
Garage Dump Concrete Truck 13/15	Concrete Mixer Truck	114.0	62.2	79.2	92.5	106.0	109.1	106.3	107.6	103.7	96.1	84.9
Garage Dump Concrete Truck 14/15	Concrete Mixer Truck	114.0	62.2	79.2	92.5	106.0	109.1	106.3	107.6	103.7	96.1	84.9
Garage Dump Concrete Truck 15/15	Concrete Mixer Truck	114.0	62.2	79.2	92.5	106.0	109.1	106.3	107.6	103.7	96.1	84.9
Garage Dump Deep Foundation Drill 1/2	Auger Drill	132.6	67.0	85.6	101.6	124.6	130.5	123.5	122.1	115.7	103.9	87.9
Garage Dump Deep Foundation Drill 2/2	Auger Drill	132.6	67.0	85.6	101.6	124.6	130.5	123.5	122.1	115.7	103.9	87.9
Garage Dump Delivery Truck 1/1	Flatbed Truck	105.8	58.1	72.1	87.8	99.7	100.4	100.0	97.1	92.0	81.0	63.1
Garage Dump Demo Saw 1/3	Power Tools - Reciprocating Saw	97.6	42.8	59.1	62.7	76.1	89.5	88.1	94.3	90.3	85.6	72.3
Garage Dump Demo Saw 2/3	Power Tools - Reciprocating Saw	97.6	42.8	59.1	62.7	76.1	89.5	88.1	94.3	90.3	85.6	72.3
Garage Dump Demo Saw 3/3	Power Tools - Reciprocating Saw	97.6	42.8	59.1	62.7	76.1	89.5	88.1	94.3	90.3	85.6	72.3

/a/ If a specific piece of construction equipment provided by the Burbank-Glendale-Pasadena Airport Authority was not specifically listed in RCNM 2.0, a surrogate piece of equipment is identified.
 /b/ RCNM 2.0 full octave band source levels.



Garage Structure Construction

BUR Terminal Reconstruction Construction Equipment	RCNM 2.0 Source /a/	Sound Power (Lw) dB(A)	31.5Hz /b/ dB(A)	63Hz /b/ dB(A)	125Hz /b/ dB(A)	250Hz /b/ dB(A)	500Hz /b/ dB(A)	1kHz /b/ dB(A)	2kHz /b/ dB(A)	4kHz /b/ dB(A)	8kHz /b/ dB(A)	16kHz /b/ dB(A)
Garage Dump Excavator 1/2	Excavator	118.3	71.7	86.2	107.2	108.9	115.1	111.5	108.4	102.2	93.3	79.3
Garage Dump Excavator 2/2	Excavator	118.3	71.7	86.2	107.2	108.9	115.1	111.5	108.4	102.2	93.3	79.3
Garage Dump Generator 1/10	Generator	99.4	53.4	72.1	84.8	94.1	95.6	91.2	88.0	83.8	76.5	64.9
Garage Dump Generator 2/10	Generator	99.4	53.4	72.1	84.8	94.1	95.6	91.2	88.0	83.8	76.5	64.9
Garage Dump Generator 3/10	Generator	99.4	53.4	72.1	84.8	94.1	95.6	91.2	88.0	83.8	76.5	64.9
Garage Dump Generator 4/10	Generator	99.4	53.4	72.1	84.8	94.1	95.6	91.2	88.0	83.8	76.5	64.9
Garage Dump Generator 5/10	Generator	99.4	53.4	72.1	84.8	94.1	95.6	91.2	88.0	83.8	76.5	64.9
Garage Dump Generator 6/10	Generator	99.4	53.4	72.1	84.8	94.1	95.6	91.2	88.0	83.8	76.5	64.9
Garage Dump Generator 7/10	Generator	99.4	53.4	72.1	84.8	94.1	95.6	91.2	88.0	83.8	76.5	64.9
Garage Dump Generator 8/10	Generator	99.4	53.4	72.1	84.8	94.1	95.6	91.2	88.0	83.8	76.5	64.9
Garage Dump Generator 9/10	Generator	99.4	53.4	72.1	84.8	94.1	95.6	91.2	88.0	83.8	76.5	64.9
Garage Dump Generator 10/10	Generator	99.4	53.4	72.1	84.8	94.1	95.6	91.2	88.0	83.8	76.5	64.9
Garage Dump Jackhammer 1/6	Power Tools - Jackhammer	127.0	68.9	85.6	95.6	103.0	108.0	122.4	124.0	116.7	113.1	101.4
Garage Dump Jackhammer 2/6	Power Tools - Jackhammer	127.0	68.9	85.6	95.6	103.0	108.0	122.4	124.0	116.7	113.1	101.4
Garage Dump Jackhammer 3/6	Power Tools - Jackhammer	127.0	68.9	85.6	95.6	103.0	108.0	122.4	124.0	116.7	113.1	101.4
Garage Dump Jackhammer 4/6	Power Tools - Jackhammer	127.0	68.9	85.6	95.6	103.0	108.0	122.4	124.0	116.7	113.1	101.4
Garage Dump Jackhammer 5/6	Power Tools - Jackhammer	127.0	68.9	85.6	95.6	103.0	108.0	122.4	124.0	116.7	113.1	101.4
Garage Dump Jackhammer 6/6	Power Tools - Jackhammer	127.0	68.9	85.6	95.6	103.0	108.0	122.4	124.0	116.7	113.1	101.4
Garage Dump Loader 1/1	Front End Loader (Cyclical)	113.0	61.7	79.3	90.6	103.3	110.1	104.7	104.5	101.7	93.7	74.3
Garage Dump Material Truck 1/8	Flatbed Truck	105.8	58.1	72.1	87.8	99.7	100.4	100.0	97.1	92.0	81.0	63.1
Garage Dump Material Truck 2/8	Flatbed Truck	105.8	58.1	72.1	87.8	99.7	100.4	100.0	97.1	92.0	81.0	63.1
Garage Dump Material Truck 3/8	Flatbed Truck	105.8	58.1	72.1	87.8	99.7	100.4	100.0	97.1	92.0	81.0	63.1
Garage Dump Material Truck 4/8	Flatbed Truck	105.8	58.1	72.1	87.8	99.7	100.4	100.0	97.1	92.0	81.0	63.1
Garage Dump Material Truck 5/8	Flatbed Truck	105.8	58.1	72.1	87.8	99.7	100.4	100.0	97.1	92.0	81.0	63.1
Garage Dump Material Truck 6/8	Flatbed Truck	105.8	58.1	72.1	87.8	99.7	100.4	100.0	97.1	92.0	81.0	63.1
Garage Dump Material Truck 7/8	Flatbed Truck	105.8	58.1	72.1	87.8	99.7	100.4	100.0	97.1	92.0	81.0	63.1
Garage Dump Material Truck 8/8	Flatbed Truck	105.8	58.1	72.1	87.8	99.7	100.4	100.0	97.1	92.0	81.0	63.1

/a/ If a specific piece of construction equipment provided by the Burbank-Glendale-Pasadena Airport Authority was not specifically listed in RCNM 2.0, a surrogate piece of equipment is identified.
 /b/ RCNM 2.0 full octave band source levels.



Garage Structure Construction

BUR Terminal Reconstruction Construction Equipment	RCNM 2.0 Source /a/ /b/	Sound Power (Lw) dB(A)	31.5Hz	63Hz	125Hz	250Hz	500Hz	1kHz	2kHz	4kHz	8kHz	16kHz
			/b/ dB(A)	/b/ dB(A)	/b/ dB(A)	/b/ dB(A)	/b/ dB(A)	/b/ dB(A)	/b/ dB(A)	/b/ dB(A)	/b/ dB(A)	/b/ dB(A)
Garage Dump Mini Excavator 1/2	Excavator	118.3	71.7	86.2	107.2	108.9	115.1	111.5	108.4	102.2	93.3	79.3
Garage Dump Mini Excavator 2/2	Excavator	118.3	71.7	86.2	107.2	108.9	115.1	111.5	108.4	102.2	93.3	79.3
Garage Dump Roller 1/1	Compactor (Roller)	114.0	79.7	95.9	95.5	109.7	107.1	108.8	101.9	97.3	88.4	75.6
Garage Dump Skid Steer 1/2	Front End Loader (Cyclical)	113.0	61.7	79.3	90.6	103.3	110.1	104.7	104.5	101.7	93.7	74.3
Garage Dump Skid Steer 2/2	Front End Loader (Cyclical)	113.0	61.7	79.3	90.6	103.3	110.1	104.7	104.5	101.7	93.7	74.3
Garage Dump Tow Behind Compressor 1/1	Compressor	98.4	56.8	82.4	87.1	92.5	90.9	92.6	88.8	85.7	82.3	76.7
Garage Dump Tower Crane 1/3	Crane	107.6	68.1	83.4	90.6	100.7	102.9	101.8	98.0	93.3	89.2	83.5
Garage Dump Tower Crane 2/3	Crane	107.6	68.1	83.4	90.6	100.7	102.9	101.8	98.0	93.3	89.2	83.5
Garage Dump Tower Crane 3/3	Crane	107.6	68.1	83.4	90.6	100.7	102.9	101.8	98.0	93.3	89.2	83.5
Garage Dump Trowel Mech 1/6	Scraper	124.0	70.3	83.0	98.6	122.9	114.4	111.7	110.5	104.6	96.1	83.9
Garage Dump Trowel Mech 2/6	Scraper	124.0	70.3	83.0	98.6	122.9	114.4	111.7	110.5	104.6	96.1	83.9
Garage Dump Trowel Mech 3/6	Scraper	124.0	70.3	83.0	98.6	122.9	114.4	111.7	110.5	104.6	96.1	83.9
Garage Dump Trowel Mech 4/6	Scraper	124.0	70.3	83.0	98.6	122.9	114.4	111.7	110.5	104.6	96.1	83.9
Garage Dump Trowel Mech 5/6	Scraper	124.0	70.3	83.0	98.6	122.9	114.4	111.7	110.5	104.6	96.1	83.9
Garage Dump Trowel Mech 6/6	Scraper	124.0	70.3	83.0	98.6	122.9	114.4	111.7	110.5	104.6	96.1	83.9
Garage Dump Truck 1/4	Dump Truck (Passby)	104.7	65.9	81.2	84.6	99.4	96.5	100.3	95.6	91.2	83.4	73.7
Garage Dump Truck 2/4	Dump Truck (Passby)	104.7	65.9	81.2	84.6	99.4	96.5	100.3	95.6	91.2	83.4	73.7
Garage Dump Truck 3/4	Dump Truck (Passby)	104.7	65.9	81.2	84.6	99.4	96.5	100.3	95.6	91.2	83.4	73.7
Garage Dump Truck 4/4	Dump Truck (Passby)	104.7	65.9	81.2	84.6	99.4	96.5	100.3	95.6	91.2	83.4	73.7
Garage Dump Vibrator 1/6	Vibratory Concrete Consolidator	111.8	64.3	76.9	87.5	94.8	101.6	107.7	106.2	104.7	96.9	83.5
Garage Dump Vibrator 2/6	Vibratory Concrete Consolidator	111.8	64.3	76.9	87.5	94.8	101.6	107.7	106.2	104.7	96.9	83.5
Garage Dump Vibrator 3/6	Vibratory Concrete Consolidator	111.8	64.3	76.9	87.5	94.8	101.6	107.7	106.2	104.7	96.9	83.5
Garage Dump Vibrator 4/6	Vibratory Concrete Consolidator	111.8	64.3	76.9	87.5	94.8	101.6	107.7	106.2	104.7	96.9	83.5
Garage Dump Vibrator 5/6	Vibratory Concrete Consolidator	111.8	64.3	76.9	87.5	94.8	101.6	107.7	106.2	104.7	96.9	83.5
Garage Dump Vibrator 6/6	Vibratory Concrete Consolidator	111.8	64.3	76.9	87.5	94.8	101.6	107.7	106.2	104.7	96.9	83.5
Garage Dump Warehouse Fork 1/4	Telescopic Handler (Forklift)	119.9	57.4	77.9	87.6	103.1	119.3	107.0	105.0	101.2	92.6	77.5

/a/ If a specific piece of construction equipment provided by the Burbank-Glendale-Pasadena Airport Authority was not specifically listed in RCNM 2.0, a surrogate piece of equipment is identified.
 /b/ RCNM 2.0 full octave band source levels.

Garage Structure Construction

BUR Terminal Reconstruction Construction Equipment	RCNM 2.0 Source /a/	Sound Power (Lw) dB(A)	31.5Hz /b/ dB(A)	63Hz /b/ dB(A)	125Hz /b/ dB(A)	250Hz /b/ dB(A)	500Hz /b/ dB(A)	1kHz /b/ dB(A)	2kHz /b/ dB(A)	4kHz /b/ dB(A)	8kHz /b/ dB(A)	16kHz /b/ dB(A)
Garage Dump Warehouse Fork 2/4	Telescopic Handler (Forklift)	119.9	57.4	77.9	87.6	103.1	119.3	107.0	105.0	101.2	92.6	77.5
Garage Dump Warehouse Fork 3/4	Telescopic Handler (Forklift)	119.9	57.4	77.9	87.6	103.1	119.3	107.0	105.0	101.2	92.6	77.5
Garage Dump Warehouse Fork 4/4	Telescopic Handler (Forklift)	119.9	57.4	77.9	87.6	103.1	119.3	107.0	105.0	101.2	92.6	77.5
Garage Dump Water Truck 1/1	Water Spray Truck	103.6	60.5	75.7	82.5	97.2	97.4	98.9	94.5	89.7	85.0	73.4



/a/ If a specific piece of construction equipment provided by the Burbank-Glendale-Pasadena Airport Authority was not specifically listed in RCNM 2.0, a surrogate piece of equipment is identified.
 /b/ RCNM 2.0 full octave band source levels.

Building Structure Construction

BUR Terminal Reconstructor Construction Equipment	RCNM 2.0 Source /a/	Sound Power (Lw) dB(A)	31.5Hz	63Hz	125Hz	250Hz	500Hz	1kHz	2kHz	4kHz	8kHz	16kHz
			/b/ dB(A)	/b/ dB(A)	/b/ dB(A)	/b/ dB(A)	/b/ dB(A)	/b/ dB(A)	/b/ dB(A)	/b/ dB(A)	/b/ dB(A)	/b/ dB(A)
Building Structure All Terrain Forklift 1/6	Front End Loader (Passby)	102.8	61.2	75.4	88.0	97.6	94.7	98.3	93.3	88.6	82.6	70.6
Building Structure All Terrain Forklift 2/6	Front End Loader (Passby)	102.8	61.2	75.4	88.0	97.6	94.7	98.3	93.3	88.6	82.6	70.6
Building Structure All Terrain Forklift 3/6	Front End Loader (Passby)	102.8	61.2	75.4	88.0	97.6	94.7	98.3	93.3	88.6	82.6	70.6
Building Structure All Terrain Forklift 4/6	Front End Loader (Passby)	102.8	61.2	75.4	88.0	97.6	94.7	98.3	93.3	88.6	82.6	70.6
Building Structure All Terrain Forklift 5/6	Front End Loader (Passby)	102.8	61.2	75.4	88.0	97.6	94.7	98.3	93.3	88.6	82.6	70.6
Building Structure All Terrain Forklift 6/6	Front End Loader (Passby)	102.8	61.2	75.4	88.0	97.6	94.7	98.3	93.3	88.6	82.6	70.6
Building Structure Compactor 1/2	Compactor (Plate)	106.2	52.9	70.3	87.6	94.0	104.9	96.2	91.1	93.4	88.5	77.2
Building Structure Compactor 2/2	Compactor (Plate)	106.2	52.9	70.3	87.6	94.0	104.9	96.2	91.1	93.4	88.5	77.2
Building Structure Concrete Pump 1/1	Pump	105.5	68.8	78.8	88.5	96.3	96.3	101.4	98.7	96.0	88.5	80.1
Building Structure Concrete Truck 1/15	Concrete Mixer Truck	114.0	62.2	79.2	92.5	106.0	109.1	106.3	107.6	103.7	96.1	84.9
Building Structure Concrete Truck 2/15	Concrete Mixer Truck	114.0	62.2	79.2	92.5	106.0	109.1	106.3	107.6	103.7	96.1	84.9
Building Structure Concrete Truck 3/15	Concrete Mixer Truck	114.0	62.2	79.2	92.5	106.0	109.1	106.3	107.6	103.7	96.1	84.9
Building Structure Concrete Truck 4/15	Concrete Mixer Truck	114.0	62.2	79.2	92.5	106.0	109.1	106.3	107.6	103.7	96.1	84.9
Building Structure Concrete Truck 5/15	Concrete Mixer Truck	114.0	62.2	79.2	92.5	106.0	109.1	106.3	107.6	103.7	96.1	84.9
Building Structure Concrete Truck 6/15	Concrete Mixer Truck	114.0	62.2	79.2	92.5	106.0	109.1	106.3	107.6	103.7	96.1	84.9
Building Structure Concrete Truck 7/15	Concrete Mixer Truck	114.0	62.2	79.2	92.5	106.0	109.1	106.3	107.6	103.7	96.1	84.9
Building Structure Concrete Truck 8/15	Concrete Mixer Truck	114.0	62.2	79.2	92.5	106.0	109.1	106.3	107.6	103.7	96.1	84.9
Building Structure Concrete Truck 9/15	Concrete Mixer Truck	114.0	62.2	79.2	92.5	106.0	109.1	106.3	107.6	103.7	96.1	84.9
Building Structure Concrete Truck 10/15	Concrete Mixer Truck	114.0	62.2	79.2	92.5	106.0	109.1	106.3	107.6	103.7	96.1	84.9
Building Structure Concrete Truck 11/15	Concrete Mixer Truck	114.0	62.2	79.2	92.5	106.0	109.1	106.3	107.6	103.7	96.1	84.9
Building Structure Concrete Truck 12/15	Concrete Mixer Truck	114.0	62.2	79.2	92.5	106.0	109.1	106.3	107.6	103.7	96.1	84.9
Building Structure Concrete Truck 13/15	Concrete Mixer Truck	114.0	62.2	79.2	92.5	106.0	109.1	106.3	107.6	103.7	96.1	84.9
Building Structure Concrete Truck 14/15	Concrete Mixer Truck	114.0	62.2	79.2	92.5	106.0	109.1	106.3	107.6	103.7	96.1	84.9
Building Structure Concrete Truck 15/15	Concrete Mixer Truck	114.0	62.2	79.2	92.5	106.0	109.1	106.3	107.6	103.7	96.1	84.9
Building Structure Crawler Crane 1/4	Crane	107.6	68.1	83.4	90.6	100.7	102.9	101.8	98.0	93.3	89.2	83.5
Building Structure Crawler Crane 2/4	Crane	107.6	68.1	83.4	90.6	100.7	102.9	101.8	98.0	93.3	89.2	83.5

/a/ If a specific piece of construction equipment provided by the Burbank-Glendale-Pasadena Airport Authority was not specifically listed in RCNM 2.0, a surrogate piece of equipment is identified.
 /b/ RCNM 2.0 full octave band source levels.



Building Structure Construction

BUR Terminal Reconstructor Construction Equipment	RCNM 2.0 Source /a/	Sound Power (Lw) dB(A)	31.5Hz	63Hz	125Hz	250Hz	500Hz	1kHz	2kHz	4kHz	8kHz	16kHz
			/b/ dB(A)	/b/ dB(A)	/b/ dB(A)	/b/ dB(A)	/b/ dB(A)	/b/ dB(A)	/b/ dB(A)	/b/ dB(A)	/b/ dB(A)	/b/ dB(A)
Building Structure Crawler Crane 3/4	Crane	107.6	68.1	83.4	90.6	100.7	102.9	101.8	98.0	93.3	89.2	83.5
Building Structure Crawler Crane 4/4	Crane	107.6	68.1	83.4	90.6	100.7	102.9	101.8	98.0	93.3	89.2	83.5
Building Structure Deep Foundation Drill 1/2	Auger Drill	132.6	67.0	85.6	101.6	124.6	130.5	123.5	122.1	115.7	103.9	87.9
Building Structure Deep Foundation Drill 2/2	Auger Drill	132.6	67.0	85.6	101.6	124.6	130.5	123.5	122.1	115.7	103.9	87.9
Building Structure Delivery Truck 1/1	Flatbed Truck	105.8	58.1	72.1	87.8	99.7	100.4	100.0	97.1	92.0	81.0	63.1
Building Structure Demo Saw 1/3	Power Tools - Reciprocating Saw	97.6	42.8	59.1	62.7	76.1	89.5	88.1	94.3	90.3	85.6	72.3
Building Structure Demo Saw 1/3	Power Tools - Reciprocating Saw	97.6	42.8	59.1	62.7	76.1	89.5	88.1	94.3	90.3	85.6	72.3
Building Structure Demo Saw 2/3	Power Tools - Reciprocating Saw	97.6	42.8	59.1	62.7	76.1	89.5	88.1	94.3	90.3	85.6	72.3
Building Structure Demo Saw 2/3	Power Tools - Reciprocating Saw	97.6	42.8	59.1	62.7	76.1	89.5	88.1	94.3	90.3	85.6	72.3
Building Structure Demo Saw 3/3	Power Tools - Reciprocating Saw	97.6	42.8	59.1	62.7	76.1	89.5	88.1	94.3	90.3	85.6	72.3
Building Structure Demo Saw 3/3	Power Tools - Reciprocating Saw	97.6	42.8	59.1	62.7	76.1	89.5	88.1	94.3	90.3	85.6	72.3
Building Structure Dump Truck 1/1	Dump Truck (Passby)	104.7	65.9	81.2	84.6	99.4	96.5	100.3	95.6	91.2	83.4	73.7
Building Structure Excavator 1/2	Excavator	118.3	71.7	86.2	107.2	108.9	115.1	111.5	108.4	102.2	93.3	79.3
Building Structure Excavator 2/2	Excavator	118.3	71.7	86.2	107.2	108.9	115.1	111.5	108.4	102.2	93.3	79.3
Building Structure Generator 1/10	Generator	99.4	53.4	72.1	84.8	94.1	95.6	91.2	88.0	83.8	76.5	64.9
Building Structure Generator 2/10	Generator	99.4	53.4	72.1	84.8	94.1	95.6	91.2	88.0	83.8	76.5	64.9
Building Structure Generator 3/10	Generator	99.4	53.4	72.1	84.8	94.1	95.6	91.2	88.0	83.8	76.5	64.9
Building Structure Generator 4/10	Generator	99.4	53.4	72.1	84.8	94.1	95.6	91.2	88.0	83.8	76.5	64.9
Building Structure Generator 5/10	Generator	99.4	53.4	72.1	84.8	94.1	95.6	91.2	88.0	83.8	76.5	64.9
Building Structure Generator 6/10	Generator	99.4	53.4	72.1	84.8	94.1	95.6	91.2	88.0	83.8	76.5	64.9
Building Structure Generator 7/10	Generator	99.4	53.4	72.1	84.8	94.1	95.6	91.2	88.0	83.8	76.5	64.9
Building Structure Generator 8/10	Generator	99.4	53.4	72.1	84.8	94.1	95.6	91.2	88.0	83.8	76.5	64.9
Building Structure Generator 9/10	Generator	99.4	53.4	72.1	84.8	94.1	95.6	91.2	88.0	83.8	76.5	64.9
Building Structure Generator 10/10	Generator	99.4	53.4	72.1	84.8	94.1	95.6	91.2	88.0	83.8	76.5	64.9
Building Structure Grinder 1/6	Power Tools - Grinder	102.8	44.4	60.7	68.6	79.4	87.2	90.4	98.4	97.0	96.0	91.9
Building Structure Grinder 2/6	Power Tools - Grinder	102.8	44.4	60.7	68.6	79.4	87.2	90.4	98.4	97.0	96.0	91.9
Building Structure Grinder 3/6	Power Tools - Grinder	102.8	44.4	60.7	68.6	79.4	87.2	90.4	98.4	97.0	96.0	91.9
Building Structure Grinder 4/6	Power Tools - Grinder	102.8	44.4	60.7	68.6	79.4	87.2	90.4	98.4	97.0	96.0	91.9

/a/ If a specific piece of construction equipment provided by the Burbank-Glendale-Pasadena Airport Authority was not specifically listed in RCNM 2.0, a surrogate piece of equipment is identified.
 /b/ RCNM 2.0 full octave band source levels.



Building Structure Construction

BUR Terminal Reconstruction Construction Equipment	RCNM 2.0 Source /a/	Sound Power (Lw) dB(A)	31.5Hz	63Hz	125Hz	250Hz	500Hz	1kHz	2kHz	4kHz	8kHz	16kHz
			/b/ dB(A)	/b/ dB(A)	/b/ dB(A)	/b/ dB(A)	/b/ dB(A)	/b/ dB(A)	/b/ dB(A)	/b/ dB(A)	/b/ dB(A)	/b/ dB(A)
Building Structure Grinder 5/6	Power Tools - Grinder	102.8	44.4	60.7	68.6	79.4	87.2	90.4	98.4	97.0	96.0	91.9
Building Structure Grinder 6/6	Power Tools - Grinder	102.8	44.4	60.7	68.6	79.4	87.2	90.4	98.4	97.0	96.0	91.9
Building Structure Impact Gun 1/6	Power Tools - Impact Wrench	103.8	38.7	55.6	67.8	76.0	86.1	101.9	95.4	95.8	88.3	78.3
Building Structure Impact Gun 2/6	Power Tools - Impact Wrench	103.8	38.7	55.6	67.8	76.0	86.1	101.9	95.4	95.8	88.3	78.3
Building Structure Impact Gun 3/6	Power Tools - Impact Wrench	103.8	38.7	55.6	67.8	76.0	86.1	101.9	95.4	95.8	88.3	78.3
Building Structure Impact Gun 4/6	Power Tools - Impact Wrench	103.8	38.7	55.6	67.8	76.0	86.1	101.9	95.4	95.8	88.3	78.3
Building Structure Impact Gun 5/6	Power Tools - Impact Wrench	103.8	38.7	55.6	67.8	76.0	86.1	101.9	95.4	95.8	88.3	78.3
Building Structure Impact Gun 6/6	Power Tools - Impact Wrench	103.8	38.7	55.6	67.8	76.0	86.1	101.9	95.4	95.8	88.3	78.3
Building Structure Jackhammer 1/6	Power Tools - Jackhammer	127.0	68.9	85.6	95.6	103.0	108.0	122.4	124.0	116.7	113.1	101.4
Building Structure Jackhammer 2/6	Power Tools - Jackhammer	127.0	68.9	85.6	95.6	103.0	108.0	122.4	124.0	116.7	113.1	101.4
Building Structure Jackhammer 3/6	Power Tools - Jackhammer	127.0	68.9	85.6	95.6	103.0	108.0	122.4	124.0	116.7	113.1	101.4
Building Structure Jackhammer 4/6	Power Tools - Jackhammer	127.0	68.9	85.6	95.6	103.0	108.0	122.4	124.0	116.7	113.1	101.4
Building Structure Jackhammer 5/6	Power Tools - Jackhammer	127.0	68.9	85.6	95.6	103.0	108.0	122.4	124.0	116.7	113.1	101.4
Building Structure Jackhammer 6/6	Power Tools - Jackhammer	127.0	68.9	85.6	95.6	103.0	108.0	122.4	124.0	116.7	113.1	101.4
Building Structure Loader 1/1	Front End Loader (Cyclical)	113.0	61.7	79.3	90.6	103.3	110.1	104.7	104.5	101.7	93.7	74.3
Building Structure Material Truck 1/14	Flatbed Truck	105.8	58.1	72.1	87.8	99.7	100.4	100.0	97.1	92.0	81.0	63.1
Building Structure Material Truck 2/14	Flatbed Truck	105.8	58.1	72.1	87.8	99.7	100.4	100.0	97.1	92.0	81.0	63.1
Building Structure Material Truck 3/14	Flatbed Truck	105.8	58.1	72.1	87.8	99.7	100.4	100.0	97.1	92.0	81.0	63.1
Building Structure Material Truck 4/14	Flatbed Truck	105.8	58.1	72.1	87.8	99.7	100.4	100.0	97.1	92.0	81.0	63.1
Building Structure Material Truck 5/14	Flatbed Truck	105.8	58.1	72.1	87.8	99.7	100.4	100.0	97.1	92.0	81.0	63.1
Building Structure Material Truck 6/14	Flatbed Truck	105.8	58.1	72.1	87.8	99.7	100.4	100.0	97.1	92.0	81.0	63.1
Building Structure Material Truck 7/14	Flatbed Truck	105.8	58.1	72.1	87.8	99.7	100.4	100.0	97.1	92.0	81.0	63.1
Building Structure Material Truck 8/14	Flatbed Truck	105.8	58.1	72.1	87.8	99.7	100.4	100.0	97.1	92.0	81.0	63.1
Building Structure Material Truck 9/14	Flatbed Truck	105.8	58.1	72.1	87.8	99.7	100.4	100.0	97.1	92.0	81.0	63.1
Building Structure Material Truck 10/14	Flatbed Truck	105.8	58.1	72.1	87.8	99.7	100.4	100.0	97.1	92.0	81.0	63.1
Building Structure Material Truck 11/14	Flatbed Truck	105.8	58.1	72.1	87.8	99.7	100.4	100.0	97.1	92.0	81.0	63.1
Building Structure Material Truck 12/14	Flatbed Truck	105.8	58.1	72.1	87.8	99.7	100.4	100.0	97.1	92.0	81.0	63.1

/a/ If a specific piece of construction equipment provided by the Burbank-Glendale-Pasadena Airport Authority was not specifically listed in RCNM 2.0, a surrogate piece of equipment is identified.
 /b/ RCNM 2.0 full octave band source levels.



Building Structure Construction



BUR Terminal Reconstructor Construction Equipment	RCNM 2.0 Source /a/	Sound Power (Lw) dB(A)	31.5Hz /b/ dB(A)	63Hz /b/ dB(A)	125Hz /b/ dB(A)	250Hz /b/ dB(A)	500Hz /b/ dB(A)	1kHz /b/ dB(A)	2kHz /b/ dB(A)	4kHz /b/ dB(A)	8kHz /b/ dB(A)	16kHz /b/ dB(A)
Building Structure Material Truck 13/14	Flatbed Truck	105.8	58.1	72.1	87.8	99.7	100.4	100.0	97.1	92.0	81.0	63.1
Building Structure Material Truck 14/14	Flatbed Truck	105.8	58.1	72.1	87.8	99.7	100.4	100.0	97.1	92.0	81.0	63.1
Building Structure Mini Excavator 1/2	Excavator	118.3	71.7	86.2	107.2	108.9	115.1	111.5	108.4	102.2	93.3	79.3
Building Structure Mini Excavator 2/2	Excavator	118.3	71.7	86.2	107.2	108.9	115.1	111.5	108.4	102.2	93.3	79.3
Building Structure Roller 1/1	Compactor (Roller)	114.0	79.7	95.9	95.5	109.7	107.1	108.8	101.9	97.3	88.4	75.6
Building Structure Skid Steer 1/2	Front End Loader (Cyclical)	113.0	61.7	79.3	90.6	103.3	110.1	104.7	104.5	101.7	93.7	74.3
Building Structure Skid Steer 2/2	Front End Loader (Cyclical)	113.0	61.7	79.3	90.6	103.3	110.1	104.7	104.5	101.7	93.7	74.3
Building Structure Trowel Mech 1/6	Scraper	124.0	70.3	83.0	98.6	122.9	114.4	111.7	110.5	104.6	96.1	83.9
Building Structure Trowel Mech 2/6	Scraper	124.0	70.3	83.0	98.6	122.9	114.4	111.7	110.5	104.6	96.1	83.9
Building Structure Trowel Mech 3/6	Scraper	124.0	70.3	83.0	98.6	122.9	114.4	111.7	110.5	104.6	96.1	83.9
Building Structure Trowel Mech 4/6	Scraper	124.0	70.3	83.0	98.6	122.9	114.4	111.7	110.5	104.6	96.1	83.9
Building Structure Trowel Mech 5/6	Scraper	124.0	70.3	83.0	98.6	122.9	114.4	111.7	110.5	104.6	96.1	83.9
Building Structure Trowel Mech 6/6	Scraper	124.0	70.3	83.0	98.6	122.9	114.4	111.7	110.5	104.6	96.1	83.9
Building Structure Vibrators 1/6	Vibratory Concrete Consolidator	111.8	64.3	76.9	87.5	94.8	101.6	107.7	106.2	104.7	96.9	83.5
Building Structure Vibrators 2/6	Vibratory Concrete Consolidator	111.8	64.3	76.9	87.5	94.8	101.6	107.7	106.2	104.7	96.9	83.5
Building Structure Vibrators 3/6	Vibratory Concrete Consolidator	111.8	64.3	76.9	87.5	94.8	101.6	107.7	106.2	104.7	96.9	83.5
Building Structure Vibrators 4/6	Vibratory Concrete Consolidator	111.8	64.3	76.9	87.5	94.8	101.6	107.7	106.2	104.7	96.9	83.5
Building Structure Vibrators 5/6	Vibratory Concrete Consolidator	111.8	64.3	76.9	87.5	94.8	101.6	107.7	106.2	104.7	96.9	83.5
Building Structure Vibrators 6/6	Vibratory Concrete Consolidator	111.8	64.3	76.9	87.5	94.8	101.6	107.7	106.2	104.7	96.9	83.5
Building Structure Warehouse Fork 1/8	Telescopic Handler (Forklift)	119.9	57.4	77.9	87.6	103.1	119.3	107.0	105.0	101.2	92.6	77.5
Building Structure Warehouse Fork 2/8	Telescopic Handler (Forklift)	119.9	57.4	77.9	87.6	103.1	119.3	107.0	105.0	101.2	92.6	77.5
Building Structure Warehouse Fork 3/8	Telescopic Handler (Forklift)	119.9	57.4	77.9	87.6	103.1	119.3	107.0	105.0	101.2	92.6	77.5

/a/ If a specific piece of construction equipment provided by the Burbank-Glendale-Pasadena Airport Authority was not specifically listed in RCNM 2.0, a surrogate piece of equipment is identified.
 /b/ RCNM 2.0 full octave band source levels.

Building Structure Construction

BUR Terminal Reconstruction Construction Equipment	RCNM 2.0 Source ^{/a/}	Sound Power (Lw) dB(A)	31.5Hz ^{/b/} dB(A)	63Hz ^{/b/} dB(A)	125Hz ^{/b/} dB(A)	250Hz ^{/b/} dB(A)	500Hz ^{/b/} dB(A)	1kHz ^{/b/} dB(A)	2kHz ^{/b/} dB(A)	4kHz ^{/b/} dB(A)	8kHz ^{/b/} dB(A)	16kHz ^{/b/} dB(A)
Building Structure Warehouse Fork 4/8	Telescopic Handler (Forklift)	119.9	57.4	77.9	87.6	103.1	119.3	107.0	105.0	101.2	92.6	77.5
Building Structure Warehouse Fork 5/8	Telescopic Handler (Forklift)	119.9	57.4	77.9	87.6	103.1	119.3	107.0	105.0	101.2	92.6	77.5
Building Structure Warehouse Fork 6/8	Telescopic Handler (Forklift)	119.9	57.4	77.9	87.6	103.1	119.3	107.0	105.0	101.2	92.6	77.5
Building Structure Warehouse Fork 7/8	Telescopic Handler (Forklift)	119.9	57.4	77.9	87.6	103.1	119.3	107.0	105.0	101.2	92.6	77.5
Building Structure Warehouse Fork 8/8	Telescopic Handler (Forklift)	119.9	57.4	77.9	87.6	103.1	119.3	107.0	105.0	101.2	92.6	77.5
Building Structure Welder 1/10	Welding Machine	103.7	55.7	76.7	83.3	93.5	98.6	99.0	96.2	91.9	82.9	69.4
Building Structure Welder 2/10	Welding Machine	103.7	55.7	76.7	83.3	93.5	98.6	99.0	96.2	91.9	82.9	69.4
Building Structure Welder 3/10	Welding Machine	103.7	55.7	76.7	83.3	93.5	98.6	99.0	96.2	91.9	82.9	69.4
Building Structure Welder 4/10	Welding Machine	103.7	55.7	76.7	83.3	93.5	98.6	99.0	96.2	91.9	82.9	69.4
Building Structure Welder 5/10	Welding Machine	103.7	55.7	76.7	83.3	93.5	98.6	99.0	96.2	91.9	82.9	69.4
Building Structure Welder 6/10	Welding Machine	103.7	55.7	76.7	83.3	93.5	98.6	99.0	96.2	91.9	82.9	69.4
Building Structure Welder 7/10	Welding Machine	103.7	55.7	76.7	83.3	93.5	98.6	99.0	96.2	91.9	82.9	69.4
Building Structure Welder 8/10	Welding Machine	103.7	55.7	76.7	83.3	93.5	98.6	99.0	96.2	91.9	82.9	69.4
Building Structure Welder 9/10	Welding Machine	103.7	55.7	76.7	83.3	93.5	98.6	99.0	96.2	91.9	82.9	69.4
Building Structure Welder 10/10	Welding Machine	103.7	55.7	76.7	83.3	93.5	98.6	99.0	96.2	91.9	82.9	69.4

^{/a/} If a specific piece of construction equipment provided by the Burbank-Glendale-Pasadena Airport Authority was not specifically listed in RCNM 2.0, a surrogate piece of equipment is identified.
^{/b/} RCNM 2.0 full octave band source levels.



Building Skin Construction

BUR Terminal Reconstruction Construction Equipment	RCNM 2.0 Source /a/	Sound Power (Lw) dB(A)	31.5Hz	63Hz	125Hz	250Hz	500Hz	1kHz	2kHz	4kHz	8kHz	16kHz
			/b/ dB(A)	/b/ dB(A)	/b/ dB(A)	/b/ dB(A)	/b/ dB(A)	/b/ dB(A)	/b/ dB(A)	/b/ dB(A)	/b/ dB(A)	/b/ dB(A)
All Terrain Forklift 1/4	Front End Loader (Passby)	102.8	61.2	75.4	88.0	97.6	94.7	98.3	93.3	88.6	82.6	70.6
All Terrain Forklift 1/4	Front End Loader (Passby)	102.8	61.2	75.4	88.0	97.6	94.7	98.3	93.3	88.6	82.6	70.6
All Terrain Forklift 2/4	Front End Loader (Passby)	102.8	61.2	75.4	88.0	97.6	94.7	98.3	93.3	88.6	82.6	70.6
All Terrain Forklift 3/4	Front End Loader (Passby)	102.8	61.2	75.4	88.0	97.6	94.7	98.3	93.3	88.6	82.6	70.6
All Terrain Forklift 4/4	Front End Loader (Passby)	102.8	61.2	75.4	88.0	97.6	94.7	98.3	93.3	88.6	82.6	70.6
Boom Lift 1/14	Front End Loader (Passby)	102.8	61.2	75.4	88.0	97.6	94.7	98.3	93.3	88.6	82.6	70.6
Boom Lift 2/14	Front End Loader (Passby)	102.8	61.2	75.4	88.0	97.6	94.7	98.3	93.3	88.6	82.6	70.6
Boom Lift 3/14	Front End Loader (Passby)	102.8	61.2	75.4	88.0	97.6	94.7	98.3	93.3	88.6	82.6	70.6
Boom Lift 4/14	Front End Loader (Passby)	102.8	61.2	75.4	88.0	97.6	94.7	98.3	93.3	88.6	82.6	70.6
Boom Lift 5/14	Front End Loader (Passby)	102.8	61.2	75.4	88.0	97.6	94.7	98.3	93.3	88.6	82.6	70.6
Boom Lift 6/14	Front End Loader (Passby)	102.8	61.2	75.4	88.0	97.6	94.7	98.3	93.3	88.6	82.6	70.6
Boom Lift 7/14	Front End Loader (Passby)	102.8	61.2	75.4	88.0	97.6	94.7	98.3	93.3	88.6	82.6	70.6
Boom Lift 8/14	Front End Loader (Passby)	102.8	61.2	75.4	88.0	97.6	94.7	98.3	93.3	88.6	82.6	70.6
Boom Lift 9/14	Front End Loader (Passby)	102.8	61.2	75.4	88.0	97.6	94.7	98.3	93.3	88.6	82.6	70.6
Boom Lift 10/14	Front End Loader (Passby)	102.8	61.2	75.4	88.0	97.6	94.7	98.3	93.3	88.6	82.6	70.6
Boom Lift 11/14	Front End Loader (Passby)	102.8	61.2	75.4	88.0	97.6	94.7	98.3	93.3	88.6	82.6	70.6
Boom Lift 11/14	Front End Loader (Passby)	102.8	61.2	75.4	88.0	97.6	94.7	98.3	93.3	88.6	82.6	70.6
Boom Lift 12/14	Front End Loader (Passby)	102.8	61.2	75.4	88.0	97.6	94.7	98.3	93.3	88.6	82.6	70.6
Boom Lift 13/14	Front End Loader (Passby)	102.8	61.2	75.4	88.0	97.6	94.7	98.3	93.3	88.6	82.6	70.6
Boom Lift 14/14	Front End Loader (Passby)	102.8	61.2	75.4	88.0	97.6	94.7	98.3	93.3	88.6	82.6	70.6
Cutting Station 1/6	Light Tower	93.4	60.5	71.0	77.3	88.4	86.7	86.8	85.5	80.9	73.5	60.7
Cutting Station 2/6	Light Tower	93.4	60.5	71.0	77.3	88.4	86.7	86.8	85.5	80.9	73.5	60.7
Cutting Station 3/6	Light Tower	93.4	60.5	71.0	77.3	88.4	86.7	86.8	85.5	80.9	73.5	60.7
Cutting Station 4/6	Light Tower	93.4	60.5	71.0	77.3	88.4	86.7	86.8	85.5	80.9	73.5	60.7
Cutting Station 5/6	Light Tower	93.4	60.5	71.0	77.3	88.4	86.7	86.8	85.5	80.9	73.5	60.7
Cutting Station 6/6	Light Tower	93.4	60.5	71.0	77.3	88.4	86.7	86.8	85.5	80.9	73.5	60.7
Drills 1/45	Rock Drill	126.9	66.6	86.7	91.7	105.8	117.6	120.5	120.5	121.9	116.8	101.5
Drills 2/45	Rock Drill	126.9	66.6	86.7	91.7	105.8	117.6	120.5	120.5	121.9	116.8	101.5
Drills 3/45	Rock Drill	126.9	66.6	86.7	91.7	105.8	117.6	120.5	120.5	121.9	116.8	101.5
Drills 4/45	Rock Drill	126.9	66.6	86.7	91.7	105.8	117.6	120.5	120.5	121.9	116.8	101.5
Drills 5/45	Rock Drill	126.9	66.6	86.7	91.7	105.8	117.6	120.5	120.5	121.9	116.8	101.5
Drills 6/45	Rock Drill	126.9	66.6	86.7	91.7	105.8	117.6	120.5	120.5	121.9	116.8	101.5
Drills 7/45	Rock Drill	126.9	66.6	86.7	91.7	105.8	117.6	120.5	120.5	121.9	116.8	101.5
Drills 8/45	Rock Drill	126.9	66.6	86.7	91.7	105.8	117.6	120.5	120.5	121.9	116.8	101.5
Drills 9/45	Rock Drill	126.9	66.6	86.7	91.7	105.8	117.6	120.5	120.5	121.9	116.8	101.5
Drills 10/45	Rock Drill	126.9	66.6	86.7	91.7	105.8	117.6	120.5	120.5	121.9	116.8	101.5
Drills 11/45	Rock Drill	126.9	66.6	86.7	91.7	105.8	117.6	120.5	120.5	121.9	116.8	101.5
Drills 12/45	Rock Drill	126.9	66.6	86.7	91.7	105.8	117.6	120.5	120.5	121.9	116.8	101.5
Drills 13/45	Rock Drill	126.9	66.6	86.7	91.7	105.8	117.6	120.5	120.5	121.9	116.8	101.5
Drills 14/45	Rock Drill	126.9	66.6	86.7	91.7	105.8	117.6	120.5	120.5	121.9	116.8	101.5
Drills 15/45	Rock Drill	126.9	66.6	86.7	91.7	105.8	117.6	120.5	120.5	121.9	116.8	101.5
Drills 16/45	Rock Drill	126.9	66.6	86.7	91.7	105.8	117.6	120.5	120.5	121.9	116.8	101.5
Drills 17/45	Rock Drill	126.9	66.6	86.7	91.7	105.8	117.6	120.5	120.5	121.9	116.8	101.5
Drills 18/45	Rock Drill	126.9	66.6	86.7	91.7	105.8	117.6	120.5	120.5	121.9	116.8	101.5
Drills 19/45	Rock Drill	126.9	66.6	86.7	91.7	105.8	117.6	120.5	120.5	121.9	116.8	101.5
Drills 20/45	Rock Drill	126.9	66.6	86.7	91.7	105.8	117.6	120.5	120.5	121.9	116.8	101.5
Drills 21/45	Rock Drill	126.9	66.6	86.7	91.7	105.8	117.6	120.5	120.5	121.9	116.8	101.5
Drills 22/45	Rock Drill	126.9	66.6	86.7	91.7	105.8	117.6	120.5	120.5	121.9	116.8	101.5

/a/ If a specific piece of construction equipment provided by the Burbank-Glendale-Pasadena Airport Authority was not specifically listed in RCNM 2.0, a surrogate piece of equipment is identified.
 /b/ RCNM 2.0 full octave band source levels.

Building Skin Construction

BUR Terminal Reconstructor Construction Equipment	RCNM 2.0 Source /a/ /b/	Sound Power (Lw) dB(A)	31.5Hz	63Hz	125Hz	250Hz	500Hz	1kHz	2kHz	4kHz	8kHz	16kHz
			/b/ dB(A)	/b/ dB(A)	/b/ dB(A)	/b/ dB(A)	/b/ dB(A)	/b/ dB(A)	/b/ dB(A)	/b/ dB(A)	/b/ dB(A)	/b/ dB(A)
Drills 23/45	Rock Drill	126.9	66.6	86.7	91.7	105.8	117.6	120.5	120.5	121.9	116.8	101.5
Drills 24/45	Rock Drill	126.9	66.6	86.7	91.7	105.8	117.6	120.5	120.5	121.9	116.8	101.5
Drills 25/45	Rock Drill	126.9	66.6	86.7	91.7	105.8	117.6	120.5	120.5	121.9	116.8	101.5
Drills 26/45	Rock Drill	126.9	66.6	86.7	91.7	105.8	117.6	120.5	120.5	121.9	116.8	101.5
Drills 27/45	Rock Drill	126.9	66.6	86.7	91.7	105.8	117.6	120.5	120.5	121.9	116.8	101.5
Drills 28/45	Rock Drill	126.9	66.6	86.7	91.7	105.8	117.6	120.5	120.5	121.9	116.8	101.5
Drills 29/45	Rock Drill	126.9	66.6	86.7	91.7	105.8	117.6	120.5	120.5	121.9	116.8	101.5
Drills 30/45	Rock Drill	126.9	66.6	86.7	91.7	105.8	117.6	120.5	120.5	121.9	116.8	101.5
Drills 31/45	Rock Drill	126.9	66.6	86.7	91.7	105.8	117.6	120.5	120.5	121.9	116.8	101.5
Drills 32/45	Rock Drill	126.9	66.6	86.7	91.7	105.8	117.6	120.5	120.5	121.9	116.8	101.5
Drills 33/45	Rock Drill	126.9	66.6	86.7	91.7	105.8	117.6	120.5	120.5	121.9	116.8	101.5
Drills 34/45	Rock Drill	126.9	66.6	86.7	91.7	105.8	117.6	120.5	120.5	121.9	116.8	101.5
Drills 35/45	Rock Drill	126.9	66.6	86.7	91.7	105.8	117.6	120.5	120.5	121.9	116.8	101.5
Drills 36/45	Rock Drill	126.9	66.6	86.7	91.7	105.8	117.6	120.5	120.5	121.9	116.8	101.5
Drills 37/45	Rock Drill	126.9	66.6	86.7	91.7	105.8	117.6	120.5	120.5	121.9	116.8	101.5
Drills 38/45	Rock Drill	126.9	66.6	86.7	91.7	105.8	117.6	120.5	120.5	121.9	116.8	101.5
Drills 39/45	Rock Drill	126.9	66.6	86.7	91.7	105.8	117.6	120.5	120.5	121.9	116.8	101.5
Drills 40/45	Rock Drill	126.9	66.6	86.7	91.7	105.8	117.6	120.5	120.5	121.9	116.8	101.5
Drills 41/45	Rock Drill	126.9	66.6	86.7	91.7	105.8	117.6	120.5	120.5	121.9	116.8	101.5
Drills 42/45	Rock Drill	126.9	66.6	86.7	91.7	105.8	117.6	120.5	120.5	121.9	116.8	101.5
Drills 43/45	Rock Drill	126.9	66.6	86.7	91.7	105.8	117.6	120.5	120.5	121.9	116.8	101.5
Drills 44/45	Rock Drill	126.9	66.6	86.7	91.7	105.8	117.6	120.5	120.5	121.9	116.8	101.5
Drills 45/45	Rock Drill	126.9	66.6	86.7	91.7	105.8	117.6	120.5	120.5	121.9	116.8	101.5
Generator 1/16	Generator	99.4	53.4	72.1	84.8	94.1	95.6	91.2	88.0	83.8	76.5	64.9
Generator 2/16	Generator	99.4	53.4	72.1	84.8	94.1	95.6	91.2	88.0	83.8	76.5	64.9
Generator 3/16	Generator	99.4	53.4	72.1	84.8	94.1	95.6	91.2	88.0	83.8	76.5	64.9
Generator 4/16	Generator	99.4	53.4	72.1	84.8	94.1	95.6	91.2	88.0	83.8	76.5	64.9
Generator 5/16	Generator	99.4	53.4	72.1	84.8	94.1	95.6	91.2	88.0	83.8	76.5	64.9
Generator 6/16	Generator	99.4	53.4	72.1	84.8	94.1	95.6	91.2	88.0	83.8	76.5	64.9
Generator 7/16	Generator	99.4	53.4	72.1	84.8	94.1	95.6	91.2	88.0	83.8	76.5	64.9
Generator 8/16	Generator	99.4	53.4	72.1	84.8	94.1	95.6	91.2	88.0	83.8	76.5	64.9
Generator 9/16	Generator	99.4	53.4	72.1	84.8	94.1	95.6	91.2	88.0	83.8	76.5	64.9
Generator 10/16	Generator	99.4	53.4	72.1	84.8	94.1	95.6	91.2	88.0	83.8	76.5	64.9
Generator 11/16	Generator	99.4	53.4	72.1	84.8	94.1	95.6	91.2	88.0	83.8	76.5	64.9
Generator 12/16	Generator	99.4	53.4	72.1	84.8	94.1	95.6	91.2	88.0	83.8	76.5	64.9
Generator 13/16	Generator	99.4	53.4	72.1	84.8	94.1	95.6	91.2	88.0	83.8	76.5	64.9
Generator 14/16	Generator	99.4	53.4	72.1	84.8	94.1	95.6	91.2	88.0	83.8	76.5	64.9
Generator 15/16	Generator	99.4	53.4	72.1	84.8	94.1	95.6	91.2	88.0	83.8	76.5	64.9
Generator 16/16	Generator	99.4	53.4	72.1	84.8	94.1	95.6	91.2	88.0	83.8	76.5	64.9
Mobile Crane 1/1	Crane	107.6	68.1	83.4	90.6	100.7	102.9	101.8	98.0	93.3	89.2	83.5

/a/ If a specific piece of construction equipment provided by the Burbank-Glendale-Pasadena Airport Authority was not specifically listed in RCNM 2.0, a surrogate piece of equipment is identified.
 /b/ RCNM 2.0 full octave band source levels.

Demolition



BUR Terminal Reconstruction Construction Equipment	RCNM 2.0 Source /a/ /b/	Sound Power (Lw) dB(A)	31.5Hz	63Hz	125Hz	250Hz	500Hz	1kHz	2kHz	4kHz	8kHz	16kHz
			/b/ dB(A)	/b/ dB(A)	/b/ dB(A)	/b/ dB(A)	/b/ dB(A)	/b/ dB(A)	/b/ dB(A)	/b/ dB(A)	/b/ dB(A)	/b/ dB(A)
Articulating Loader 1/11	Front End Loader (Cyclical)	113.0	61.7	79.3	90.6	103.3	110.1	104.7	104.5	101.7	93.7	74.3
Articulating Loader 2/11	Front End Loader (Cyclical)	113.0	61.7	79.3	90.6	103.3	110.1	104.7	104.5	101.7	93.7	74.3
Articulating Loader 3/11	Front End Loader (Cyclical)	113.0	61.7	79.3	90.6	103.3	110.1	104.7	104.5	101.7	93.7	74.3
Articulating Loader 4/11	Front End Loader (Cyclical)	113.0	61.7	79.3	90.6	103.3	110.1	104.7	104.5	101.7	93.7	74.3
Articulating Loader 5/11	Front End Loader (Cyclical)	113.0	61.7	79.3	90.6	103.3	110.1	104.7	104.5	101.7	93.7	74.3
Articulating Loader 6/11	Front End Loader (Cyclical)	113.0	61.7	79.3	90.6	103.3	110.1	104.7	104.5	101.7	93.7	74.3
Articulating Loader 7/11	Front End Loader (Cyclical)	113.0	61.7	79.3	90.6	103.3	110.1	104.7	104.5	101.7	93.7	74.3
Articulating Loader 8/11	Front End Loader (Cyclical)	113.0	61.7	79.3	90.6	103.3	110.1	104.7	104.5	101.7	93.7	74.3
Articulating Loader 9/11	Front End Loader (Cyclical)	113.0	61.7	79.3	90.6	103.3	110.1	104.7	104.5	101.7	93.7	74.3
Articulating Loader 10/11	Front End Loader (Cyclical)	113.0	61.7	79.3	90.6	103.3	110.1	104.7	104.5	101.7	93.7	74.3
Articulating Loader 11/11	Front End Loader (Cyclical)	113.0	61.7	79.3	90.6	103.3	110.1	104.7	104.5	101.7	93.7	74.3
Dozer 1/2	Dozer	117.7	64.6	78.9	93.8	110.8	111.2	113.3	110.0	100.9	95.5	86.3
Dozer 2/2	Dozer	117.7	64.6	78.9	93.8	110.8	111.2	113.3	110.0	100.9	95.5	86.3
Excavator 1/4	Excavator	118.3	71.7	86.2	107.2	108.9	115.1	111.5	108.4	102.2	93.3	79.3
Excavator 2/4	Excavator	118.3	71.7	86.2	107.2	108.9	115.1	111.5	108.4	102.2	93.3	79.3
Excavator 3/4	Excavator	118.3	71.7	86.2	107.2	108.9	115.1	111.5	108.4	102.2	93.3	79.3
Excavator 4/4	Excavator	118.3	71.7	86.2	107.2	108.9	115.1	111.5	108.4	102.2	93.3	79.3
Excavator/Sorting 1/8	Excavator	118.3	71.7	86.2	107.2	108.9	115.1	111.5	108.4	102.2	93.3	79.3
Excavator/Sorting 2/8	Excavator	118.3	71.7	86.2	107.2	108.9	115.1	111.5	108.4	102.2	93.3	79.3
Excavator/Sorting 3/8	Excavator	118.3	71.7	86.2	107.2	108.9	115.1	111.5	108.4	102.2	93.3	79.3
Excavator/Sorting 4/8	Excavator	118.3	71.7	86.2	107.2	108.9	115.1	111.5	108.4	102.2	93.3	79.3
Excavator/Sorting 5/8	Excavator	118.3	71.7	86.2	107.2	108.9	115.1	111.5	108.4	102.2	93.3	79.3
Excavator/Sorting 6/8	Excavator	118.3	71.7	86.2	107.2	108.9	115.1	111.5	108.4	102.2	93.3	79.3
Excavator/Sorting 7/8	Excavator	118.3	71.7	86.2	107.2	108.9	115.1	111.5	108.4	102.2	93.3	79.3
Excavator/Sorting 8/8	Excavator	118.3	71.7	86.2	107.2	108.9	115.1	111.5	108.4	102.2	93.3	79.3
Haul Truck 1/29	Flatbed Truck	105.8	58.1	72.1	87.8	99.7	100.4	100.0	97.1	92.0	81.0	63.1
Haul Truck 2/29	Flatbed Truck	105.8	58.1	72.1	87.8	99.7	100.4	100.0	97.1	92.0	81.0	63.1
Haul Truck 3/29	Flatbed Truck	105.8	58.1	72.1	87.8	99.7	100.4	100.0	97.1	92.0	81.0	63.1
Haul Truck 4/29	Flatbed Truck	105.8	58.1	72.1	87.8	99.7	100.4	100.0	97.1	92.0	81.0	63.1
Haul Truck 5/29	Flatbed Truck	105.8	58.1	72.1	87.8	99.7	100.4	100.0	97.1	92.0	81.0	63.1
Haul Truck 6/29	Flatbed Truck	105.8	58.1	72.1	87.8	99.7	100.4	100.0	97.1	92.0	81.0	63.1
Haul Truck 7/29	Flatbed Truck	105.8	58.1	72.1	87.8	99.7	100.4	100.0	97.1	92.0	81.0	63.1
Haul Truck 8/29	Flatbed Truck	105.8	58.1	72.1	87.8	99.7	100.4	100.0	97.1	92.0	81.0	63.1
Haul Truck 9/29	Flatbed Truck	105.8	58.1	72.1	87.8	99.7	100.4	100.0	97.1	92.0	81.0	63.1
Haul Truck 10/29	Flatbed Truck	105.8	58.1	72.1	87.8	99.7	100.4	100.0	97.1	92.0	81.0	63.1
Haul Truck 11/29	Flatbed Truck	105.8	58.1	72.1	87.8	99.7	100.4	100.0	97.1	92.0	81.0	63.1
Haul Truck 12/29	Flatbed Truck	105.8	58.1	72.1	87.8	99.7	100.4	100.0	97.1	92.0	81.0	63.1
Haul Truck 13/29	Flatbed Truck	105.8	58.1	72.1	87.8	99.7	100.4	100.0	97.1	92.0	81.0	63.1
Haul Truck 14/29	Flatbed Truck	105.8	58.1	72.1	87.8	99.7	100.4	100.0	97.1	92.0	81.0	63.1
Haul Truck 15/29	Flatbed Truck	105.8	58.1	72.1	87.8	99.7	100.4	100.0	97.1	92.0	81.0	63.1
Haul Truck 16/29	Flatbed Truck	105.8	58.1	72.1	87.8	99.7	100.4	100.0	97.1	92.0	81.0	63.1
Haul Truck 17/29	Flatbed Truck	105.8	58.1	72.1	87.8	99.7	100.4	100.0	97.1	92.0	81.0	63.1
Haul Truck 18/29	Flatbed Truck	105.8	58.1	72.1	87.8	99.7	100.4	100.0	97.1	92.0	81.0	63.1
Haul Truck 19/29	Flatbed Truck	105.8	58.1	72.1	87.8	99.7	100.4	100.0	97.1	92.0	81.0	63.1
Haul Truck 20/29	Flatbed Truck	105.8	58.1	72.1	87.8	99.7	100.4	100.0	97.1	92.0	81.0	63.1
Haul Truck 21/29	Flatbed Truck	105.8	58.1	72.1	87.8	99.7	100.4	100.0	97.1	92.0	81.0	63.1
Haul Truck 22/29	Flatbed Truck	105.8	58.1	72.1	87.8	99.7	100.4	100.0	97.1	92.0	81.0	63.1
Haul Truck 23/29	Flatbed Truck	105.8	58.1	72.1	87.8	99.7	100.4	100.0	97.1	92.0	81.0	63.1

/a/ If a specific piece of construction equipment provided by the Burbank-Glendale-Pasadena Airport Authority was not specifically listed in RCNM 2.0, a surrogate piece of equipment is identified.
 /b/ RCNM 2.0 full octave band source levels.

Demolition

BUR Terminal Reconstructor Construction Equipment	RCNM 2.0 Source /a/ /b/	Sound Power (Lw) dB(A)	31.5Hz	63Hz	125Hz	250Hz	500Hz	1kHz	2kHz	4kHz	8kHz	16kHz
			/b/ dB(A)	/b/ dB(A)	/b/ dB(A)	/b/ dB(A)	/b/ dB(A)	/b/ dB(A)	/b/ dB(A)	/b/ dB(A)	/b/ dB(A)	/b/ dB(A)
Haul Truck 24/29	Flatbed Truck	105.8	58.1	72.1	87.8	99.7	100.4	100.0	97.1	92.0	81.0	63.1
Haul Truck 25/29	Flatbed Truck	105.8	58.1	72.1	87.8	99.7	100.4	100.0	97.1	92.0	81.0	63.1
Haul Truck 26/29	Flatbed Truck	105.8	58.1	72.1	87.8	99.7	100.4	100.0	97.1	92.0	81.0	63.1
Haul Truck 27/29	Flatbed Truck	105.8	58.1	72.1	87.8	99.7	100.4	100.0	97.1	92.0	81.0	63.1
Haul Truck 28/29	Flatbed Truck	105.8	58.1	72.1	87.8	99.7	100.4	100.0	97.1	92.0	81.0	63.1
Haul Truck 29/29	Flatbed Truck	105.8	58.1	72.1	87.8	99.7	100.4	100.0	97.1	92.0	81.0	63.1
Pulverizer/Ramhoe 1/8	Excavator	118.3	71.7	86.2	107.2	108.9	115.1	111.5	108.4	102.2	93.3	79.3
Pulverizer/Ramhoe 2/8	Excavator	118.3	71.7	86.2	107.2	108.9	115.1	111.5	108.4	102.2	93.3	79.3
Pulverizer/Ramhoe 3/8	Excavator	118.3	71.7	86.2	107.2	108.9	115.1	111.5	108.4	102.2	93.3	79.3
Pulverizer/Ramhoe 4/8	Excavator	118.3	71.7	86.2	107.2	108.9	115.1	111.5	108.4	102.2	93.3	79.3
Pulverizer/Ramhoe 5/8	Excavator	118.3	71.7	86.2	107.2	108.9	115.1	111.5	108.4	102.2	93.3	79.3
Pulverizer/Ramhoe 6/8	Excavator	118.3	71.7	86.2	107.2	108.9	115.1	111.5	108.4	102.2	93.3	79.3
Pulverizer/Ramhoe 7/8	Excavator	118.3	71.7	86.2	107.2	108.9	115.1	111.5	108.4	102.2	93.3	79.3
Pulverizer/Ramhoe 8/8	Excavator	118.3	71.7	86.2	107.2	108.9	115.1	111.5	108.4	102.2	93.3	79.3
Skid Steer 1/4	Front End Loader (Cyclical)	113.0	61.7	79.3	90.6	103.3	110.1	104.7	104.5	101.7	93.7	74.3
Skid Steer 2/4	Front End Loader (Cyclical)	113.0	61.7	79.3	90.6	103.3	110.1	104.7	104.5	101.7	93.7	74.3
Skid Steer 3/4	Front End Loader (Cyclical)	113.0	61.7	79.3	90.6	103.3	110.1	104.7	104.5	101.7	93.7	74.3
Skid Steer 4/4	Front End Loader (Cyclical)	113.0	61.7	79.3	90.6	103.3	110.1	104.7	104.5	101.7	93.7	74.3
Water Truck 1/5	Water Spray Truck	103.6	60.5	75.7	82.5	97.2	97.4	98.9	94.5	89.7	85.0	73.4
Water Truck 2/5	Water Spray Truck	103.6	60.5	75.7	82.5	97.2	97.4	98.9	94.5	89.7	85.0	73.4
Water Truck 3/5	Water Spray Truck	103.6	60.5	75.7	82.5	97.2	97.4	98.9	94.5	89.7	85.0	73.4
Water Truck 4/5	Water Spray Truck	103.6	60.5	75.7	82.5	97.2	97.4	98.9	94.5	89.7	85.0	73.4
Water Truck 5/5	Water Spray Truck	103.6	60.5	75.7	82.5	97.2	97.4	98.9	94.5	89.7	85.0	73.4



<p>/a/ If a specific piece of construction equipment provided by the Burbank-Glendale-Pasadena Airport Authority was not specifically listed in RCNM 2.0, a surrogate piece of equipment is identified. /b/ RCNM 2.0 full octave band source levels.</p>

/a/ If a specific piece of construction equipment provided by the Burbank-Glendale-Pasadena Airport Authority was not specifically listed in RCNM 2.0, a surrogate piece of equipment is identified.
 /b/ RCNM 2.0 full octave band source levels.



Hourly Sound Levels for Location 5 on August 22 - 29, 2023

