

Line Legend	
	Existing Property Boundary (Offset 5' For Clarity)
	Existing Contours (in Feet-MSL)
	Railroad Track
	City Boundary Line
	Building Restriction Line (BRL)
	Runway Safety Area - See Note 2.1
	Taxiway Safety Area
	Obstacle Free Zone - See Note 2.2
	Object Free Area - See Note 2.3
	Extended Centerline
	Localizer Critical Area
	Glide Slope Critical Area
	Aircraft Parking Limit Line (APLL)
	Departure Runway Protection Zone - See Note 2.4
	Approach Runway Protection Zone - See Note 2.4
	Runway Protection Zone - See Note 2.4
	Taxiway Object Free Area

Building and Facilities Legend		
Existing	Ultimate	Description
		Taxiway Pavement
		Aircraft Apron
		On Airport Building/Facility
		Off Airport Commercial Building/Facility
		Airport Building/Facility To Be Removed
		Airport Vehicle Service Road
		Airport Public Road
		Non-Aviation Airport Tenant Leasehold
		Canopy
		Airport Public Surface Auto Parking Lot
		Authority/Government Vehicle Surface Parking/Staging
		No Taxi Island or Shoulder
		Tenant Auto Surface Parking
		Engineered Material Arresting System (EMAS)

Fencing and Barrier Legend	
	Block Wall with C.L. Fence
	Frangible Metal Beam Guard Rail
	Concrete K-Rail
	Blast Fence
	Existing Chain Link Fence (8' with 15" Dia. Razor Wire)
	Future Chain Link Fence (8' with 15" Dia. Razor Wire)
	Existing Non-Security Fence

Symbol Legend	
	Airport Reference Point (ARP)
	Existing Runway Lighting
	Existing Threshold Lights
	Touchdown Zone Elevation
	Runway Low Point Elevation
	Runway High Point Elevation
	Section Corner
	Concrete Encased Survey Monument
	Airfield Wind Cone
	PACS (Primary Airport Control Station)
	SACS (Secondary Airport Control Station)

Building And Facility List							
Building Elevations (Ft. MSL)			Building Elevations (Ft. MSL)				
Number	Roof	Floor	Description	Number	Roof	Floor	Description
1	749	712	Hangar	2000	723	686	RITC Customer Service Building
1A	743	718	Hangar	3000	725	690	Elevated Walkway
1B	729	716	T-Hangars (5)	4000	748	688	Replacement Parking Structure
1C	732	718	Shelter	17	703	687	Car Wash
2	749	712	Hangar	18	808	785	Airport Maintenance
3	740	712	Office Building	18A	803	783	Airport Maintenance
4	757	705	Air Cargo Building	19	786	761	Police Helicopter Facility
5	757	705	Air Cargo Building and Hangar	20	758	746	T-Hangars (15)
6	745	704	Hangar	21	850	743	FAA ASR Complex
6A	719	703	Tenant Facility	22	804	743	Hangar
7	745	704	Hangar	25	789	738	Hangar
7A	745	704	Hangar	33	742	728	Airport Lighting Vault
7B	728	702	Hangar	34	782	727	Hangar
8	724	701	Airlines Cargo and GSE Maintenance Building	34A	783	728	Storage Shed
8A	721	699	FAA Offices and Equipment with Adjacent RT Antennae	35	782	727	Aircraft Rescue and Fire Fighting (ARFF) Station
9	735	700	Terminal Building - Second Floor	36	759	724	FBO Terminal
10	771	701	Terminal Building - Operations Tower	37	771	731	Hangar
10A	722	697	Terminal A Building - East Concourse	38	771	731	Hangar
11	722	700	Terminal B Building	39	771	731	Hangar
11A	719	698	Terminal B Building TSA Facility	40	771	733	Hangar
12	732	698	Public Surface Parking Structure	41	771	733	Hangar
12A	717	696	Valet Office/Admin Center	43	776	737	Hangar
12B	721	697	Valet Drop-Off and Pick-up Port Cochere	44	776	737	Hangar
12C	702	690	Covered Valet Surface Parking	45	776	737	Hangar
13	709	695	Electrical Facility Enclosure	50	784	760	Truck Fill Fuel Island Area Canopy
14	739	739	Commercial Vehicle Staging (Taxi & Door to Door)	50A	773	759	Fuel Administration
15A	711	711	Temporary Economy Public Surface Parking Lot A	60	768	734	Lease Building
15B	692	692	Public Surface Parking Lot B	61	762	735	Lease Building
15C	682	692	Public Surface Parking Lot C	62	781	714	FAA Air Traffic Control Tower (ATCT)
15D	684	684	Public Surface Parking Lot D	62A	726	714	FAA Base Building
15E	691	691	Public Surface Parking Lot E	70	773	734	Hangar
15F	719	719	Temporary Employee Surface Parking Lot	71	773	734	Hangar
15G	693	693	Valet Surface Parking	72	773	734	Hangar
1000	752	682	Regional Intermodal Transportation Center (RITC)	73	764	736	FBO Terminal

FAA APPROVAL STAMP:

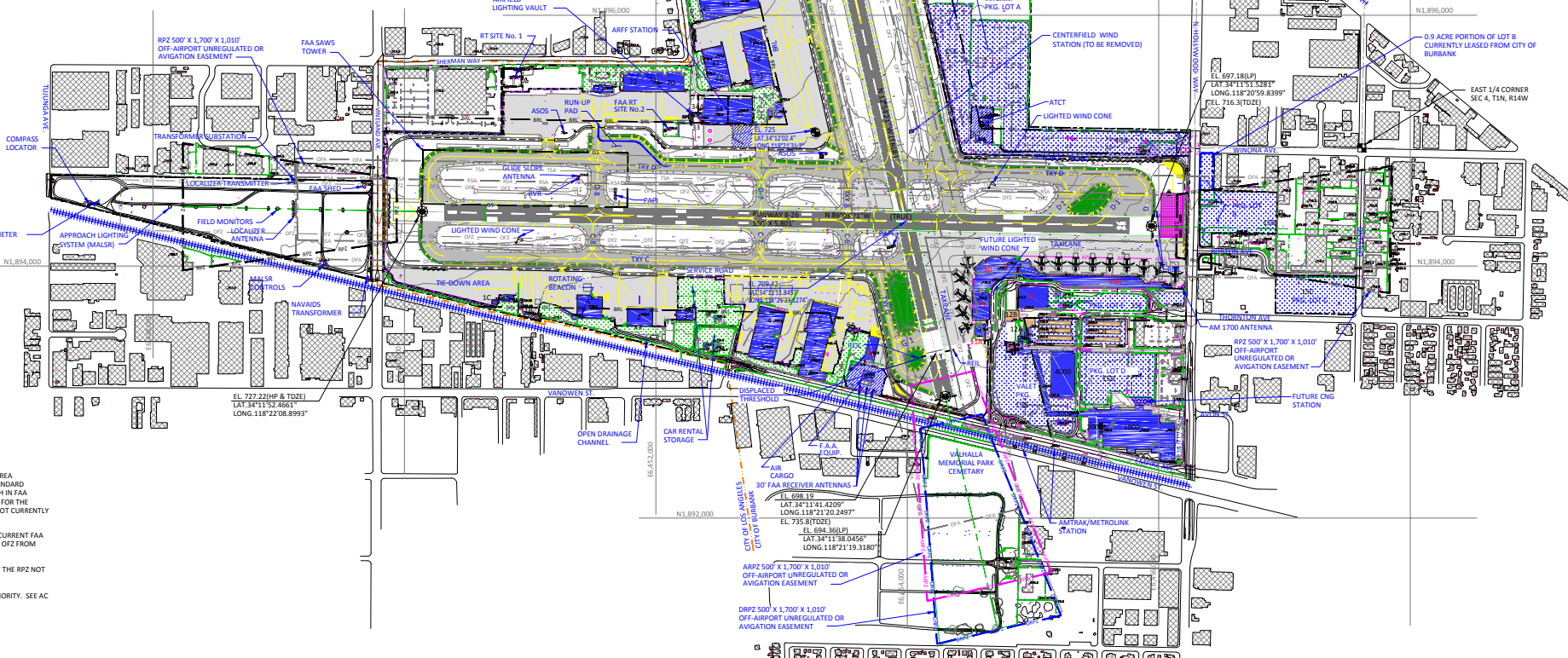
- GENERAL NOTES:
- 1.1 ALL AIRPORT LAND USES ARE COMPRISED OF A MIXTURE OF COMMERCIAL, RESIDENTIAL AND INDUSTRIAL.
 - 1.2 PLAN PREPARED BY STAFF OF THE BURBANK GLENDALE PASADENA AIRPORT AUTHORITY.
 - 1.3 THE CONTENTS OF THIS PLAN DO NOT NECESSARILY REFLECT THE OFFICIAL VIEW OR POLICY OF THE FAA. ACCEPTANCE OF THIS DOCUMENT BY THE FAA DOES NOT IN ANY WAY CONSTITUTE A COMMITMENT ON THE PART OF THE UNITED STATES TO PARTICIPATE IN ANY DEVELOPMENT DEPICTED HEREIN NOR DOES IT INDICATE THAT THE PROPOSED DEVELOPMENT IS ENVIRONMENTALLY ACCEPTABLE IN ACCORDANCE WITH APPROPRIATE PUBLIC LAWS.
 - 1.4 ALL PROPERTY SHOWN ON AIRPORT WAS ACQUIRED WITH FEDERAL ASSISTANCE, WITH THE EXCEPTION OF A-1 NORTH EXIST. PKG. LOTS 70, 70 ACRES, FORMER DOC #ENR(11,1 ACRES).
 - 1.5 ALL THRESHOLD AND AIRPORT ELEVATIONS ARE IN N.A.V.D. 88.

- FOOTNOTES:
- 2.1 SHOWS CURRENT RUNWAY SAFETY AREA AT AIRPORT AS SET FORTH IN FAA'S RUNWAY SAFETY AREA DETERMINATIONS DATED SEPTEMBER 28, 2011 AND AIRPORT CERTIFICATION MANUAL ("ACM"), STANDARD DIMENSIONS FOR A RUNWAY SAFETY AREA UNDER CURRENT FAA DESIGN STANDARDS ARE SET FORTH IN FAA ADVISORY CIRCULAR 150/5300-13A. AS SET FORTH IN THE RUNWAY SAFETY AREA DETERMINATIONS FOR THE AIRPORT, DUE TO OFF-AIRPORT SITE CONSTRAINTS AND OTHER CONDITIONS AT THE AIRPORT, IT IS NOT CURRENTLY PRACTICABLE TO IMPROVE THE RSA TO THE CURRENT FAA DESIGN STANDARDS.
 - 2.2 DEPICTS OFZ ON-AIRPORT AND AREA OFF-AIRPORT WHERE OFZ WOULD EXTEND TO RPZ UNDER CURRENT FAA GUIDANCE ABSENT OFF-AIRPORT SITE CONSTRAINTS. OFF-AIRPORT SITE CONSTRAINTS PREVENT THE OFZ FROM EXTENDING TO CURRENT FAA GUIDANCE.
 - 2.3 PART OF RUNWAY PROTECTION ZONE ("RPZ") HAS RECOMMENDATION STATUS FOR PORTION OF THE RPZ NOT CONTROLLED BY THE AIRPORT AUTHORITY. SEE AC 150/5300-13A.
 - 2.4 HAS RECOMMENDATION STATUS FOR PORTION OF THE RPZ NOT CONTROLLED BY AIRPORT AUTHORITY. SEE AC 150/5300-13A.

S:\DRAWINGS\ALP\alprev240 W.dwg, Jun 29, 2017, 4:50pm

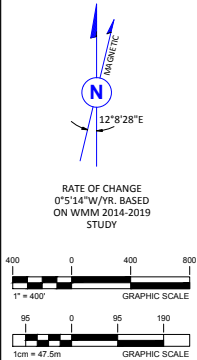
DATE	DESCRIPTION	BY	DATE	DESCRIPTION	BY	DATE	DESCRIPTION

SUN VALLEY



BOB HOPE AIRPORT
 2627 N. HOLLYWOOD WAY
 BURBANK CALIFORNIA 91505
 (COMMONLY KNOWN AS HOLLYWOOD BURBANK AIRPORT)

AIRPORT LAYOUT PLAN DRAWING SET



SHEET TITLE:
EXISTING AIRPORT LAYOUT PLAN

APPROVED:
 BURBANK-GLENDALE-PASADENA AIRPORT AUTHORITY

EXECUTIVE DIRECTOR

DATE

SENIOR DEPUTY EXECUTIVE DIRECTOR

DATE

DATE: JUNE 30, 2017
 DRAWN BY: DL
 CHECKED BY: MDC
 SHEET No: **3**
 OF 16