



The 14-Gate Replacement Terminal Project



The Airport Is an Important Economic Engine for Burbank

Airport tax revenues provide direct benefits to Burbank.

Over **\$12 million*** in tax revenues that the Airport generates for Burbank is **equivalent to:**



**The annual salary and benefits
for 77 police officers; or**

Nearly double the Library's annual budget; or



**The annual salary and benefits
for 93 firefighters**

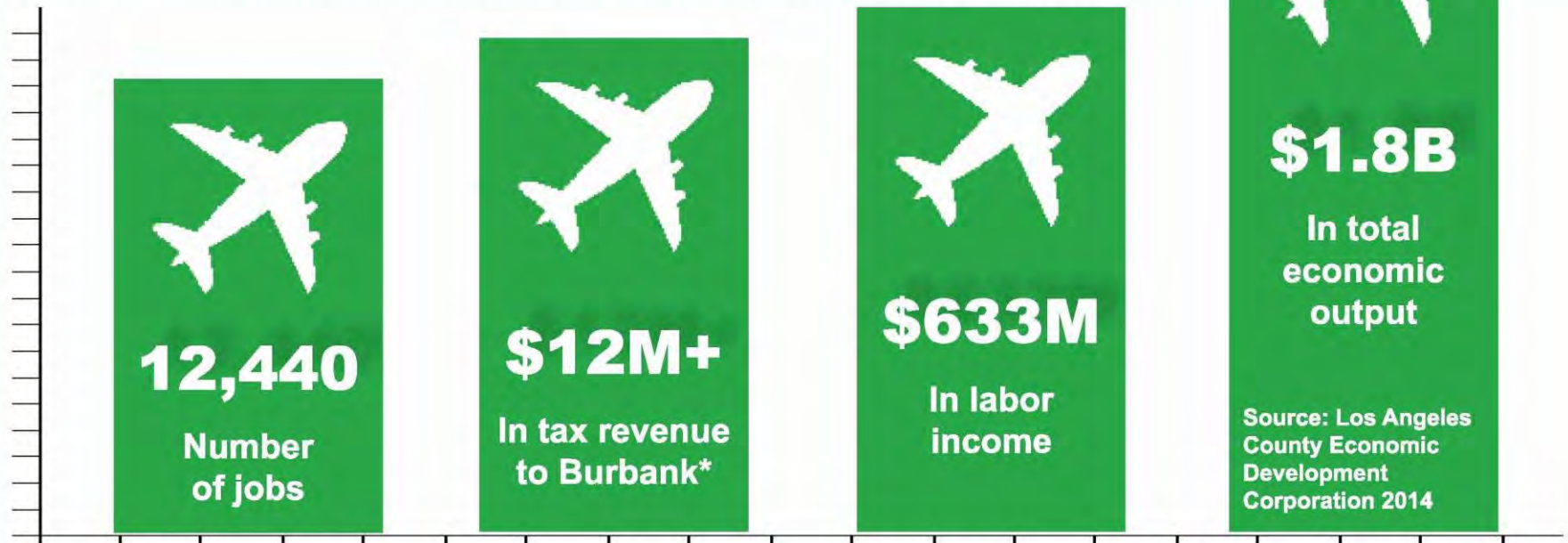


*Total annual revenues to the City of Burbank include \$9.1 million in secured and unsecured property taxes, \$2.1 million in parking taxes, and \$1.2 million in sales tax.

SOURCE: CITY OF BURBANK FINANCIAL SERVICES DEPARTMENT

BURBANK BOB HOPE AIRPORT: AN ECONOMIC ENGINE

The total economic and fiscal impact in Los Angeles County of the Burbank Bob Hope Airport, which includes airport revenues, the contribution made by on-site tenants and concessionaires, off-site spending of passengers and crew deplaning at the airport, and capital expenditures during FY 2013:



*Total annual revenues to the City of Burbank include \$9.1 million in secured and unsecured property taxes, \$2.1 million in parking taxes, and \$1.2 million in sales tax. SOURCE: CITY OF BURBANK FINANCIAL SERVICES DEPARTMENT

The Airport Needs A Safer, Modern, and More Convenient Replacement Terminal



Why the Airport Needs a Replacement Terminal

Safer Distance Between Airport Runways and Terminal

Building That Meets Today's Seismic Standards

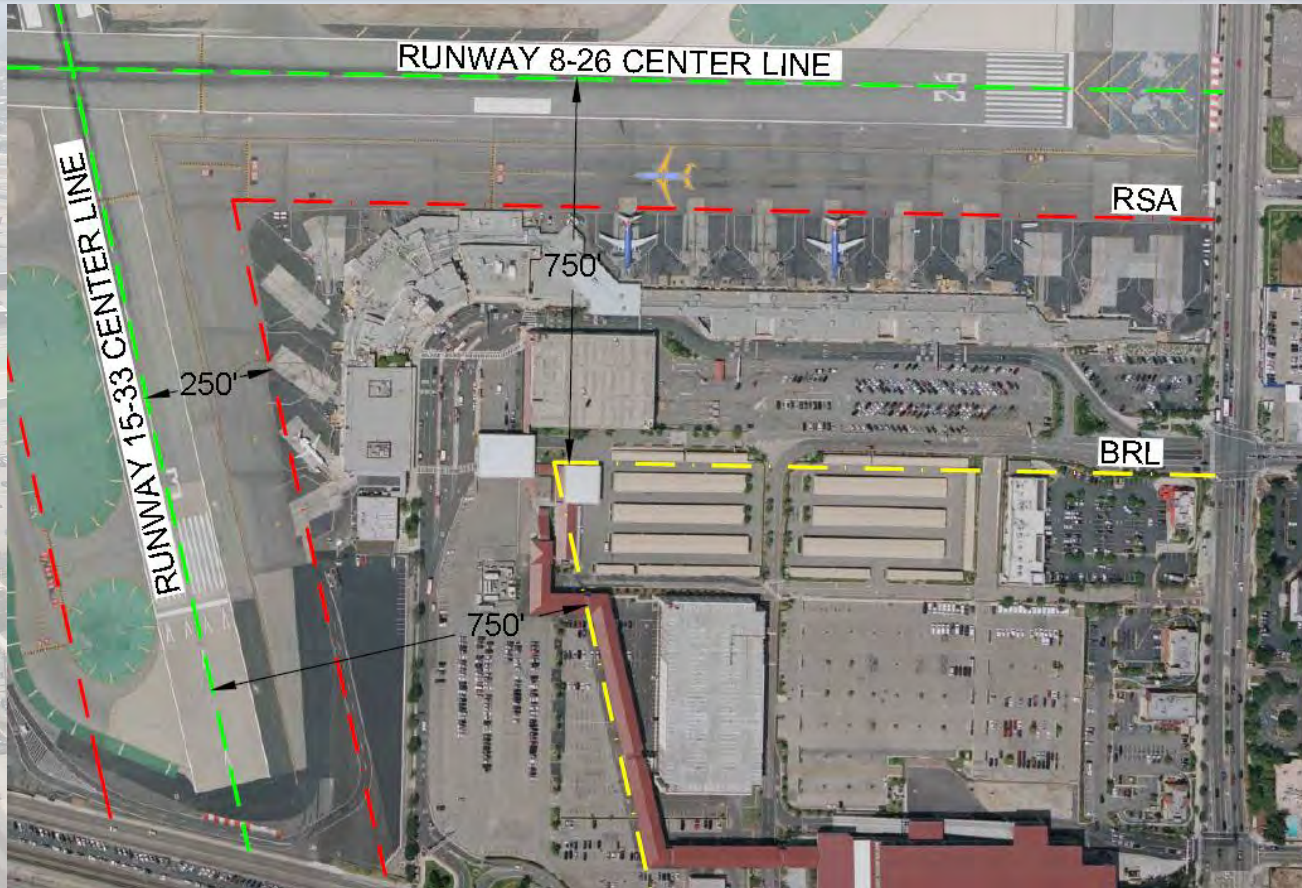
Increased Passenger Convenience



Why a Replacement Terminal?

- **Current terminal does not meet seismic standards:**
 - Central portion of the current terminal does not meet current California earthquake design standards, despite a 1995 retrofitting to satisfy City of Burbank ordinances
 - Unreinforced masonry from 1930 construction still exists
- **Replacement terminal will provide improved passenger amenities not currently provided:**
 - Improved facilities for passengers with disabilities
 - More spacious corridors, gate areas, restrooms, etc.
 - More efficient TSA screening
 - New restaurants and concessions
 - Indoor baggage claims
 - Shorter walks to furthest gates
 - Increased energy efficiency
 - A more distinctive terminal that enhances the community's image and sense of place

Current Terminal Configuration



Current Distance from Runway Center Lines

250 ft. Runway Safety Area **750 ft.** Building Restriction Line

What Does the City of Burbank Need?

- **Supermajority voting for Burbank Airport Commissioners on future decisions and actions to expand the Airport**



City & Airport Come to a Consensus

- On November 16, 2015, the City of Burbank and the Airport endorsed a Conceptual Term Sheet that proposes a Development Agreement that would give both parties what they need.



Working Together

Benefits for Burbank

With supermajority voting, Burbank will gain effective control to stop future attempts to:

1. Increase the number of airline gates
2. Acquire land
3. End the voluntary nighttime curfew on scheduled airline operations
4. Change the existing noise rules and how they are enforced
5. Expand the existing terminal or any new terminal
6. Abandon the Airport's support for Congressional approval to implement a mandatory nighttime curfew on all aircraft
7. Approve management contracts or leases in excess of 35 years

Benefits for the Airport

The City will provide the Airport with the following benefits:

1. Discretionary and ministerial approvals for the Replacement Terminal
2. A vested right to build on any Airport-zoned property other than the B-6 Trust Property

About the Replacement Terminal

- A safer, modern, 14-gate Replacement Terminal with benefits for Burbank

Replacement Terminal by the Numbers

14

Number of gates
remains the same

6,637

Public parking spaces
remain the same

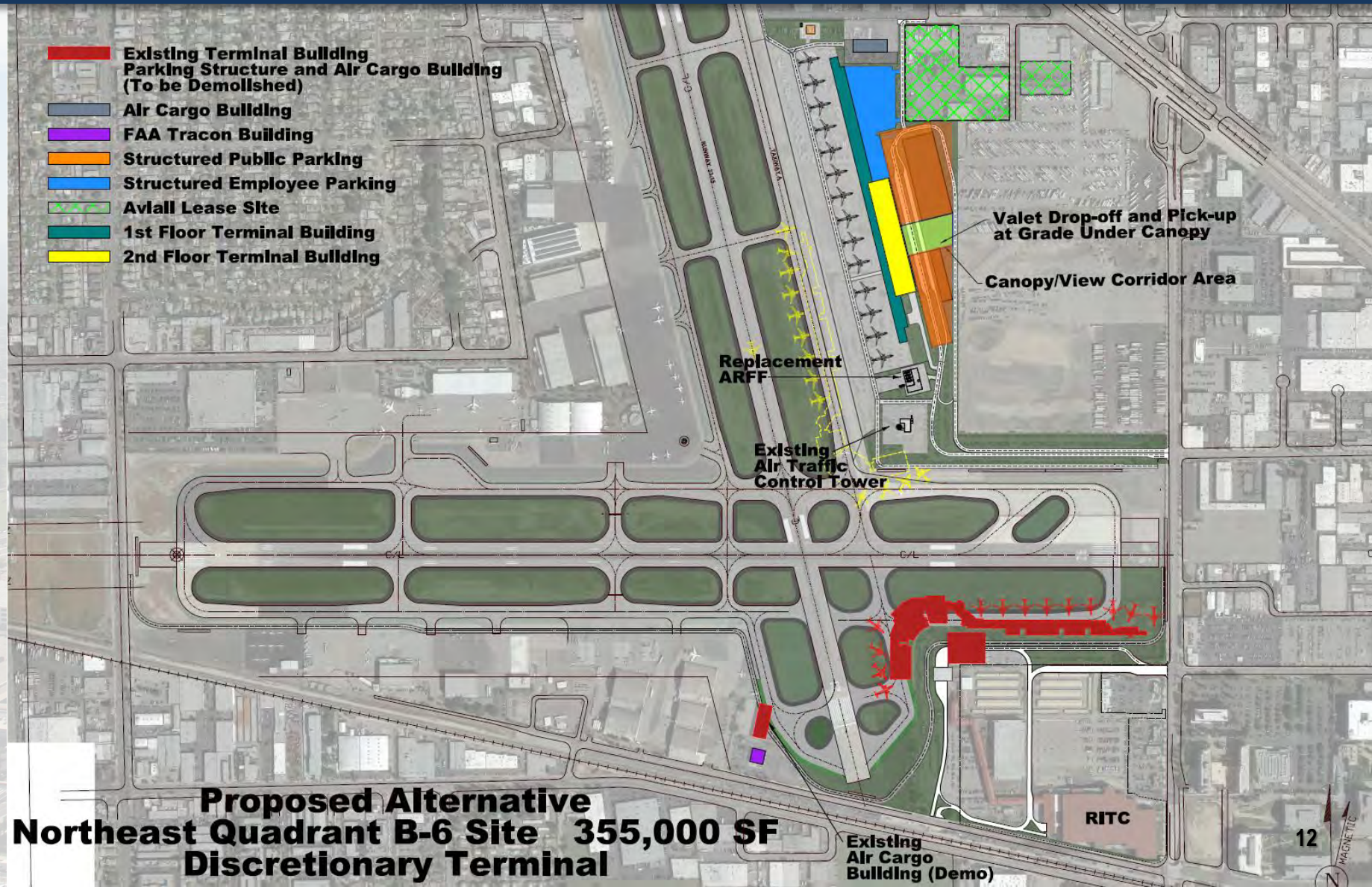
355K

Maximum square footage size; current terminal size is 232K

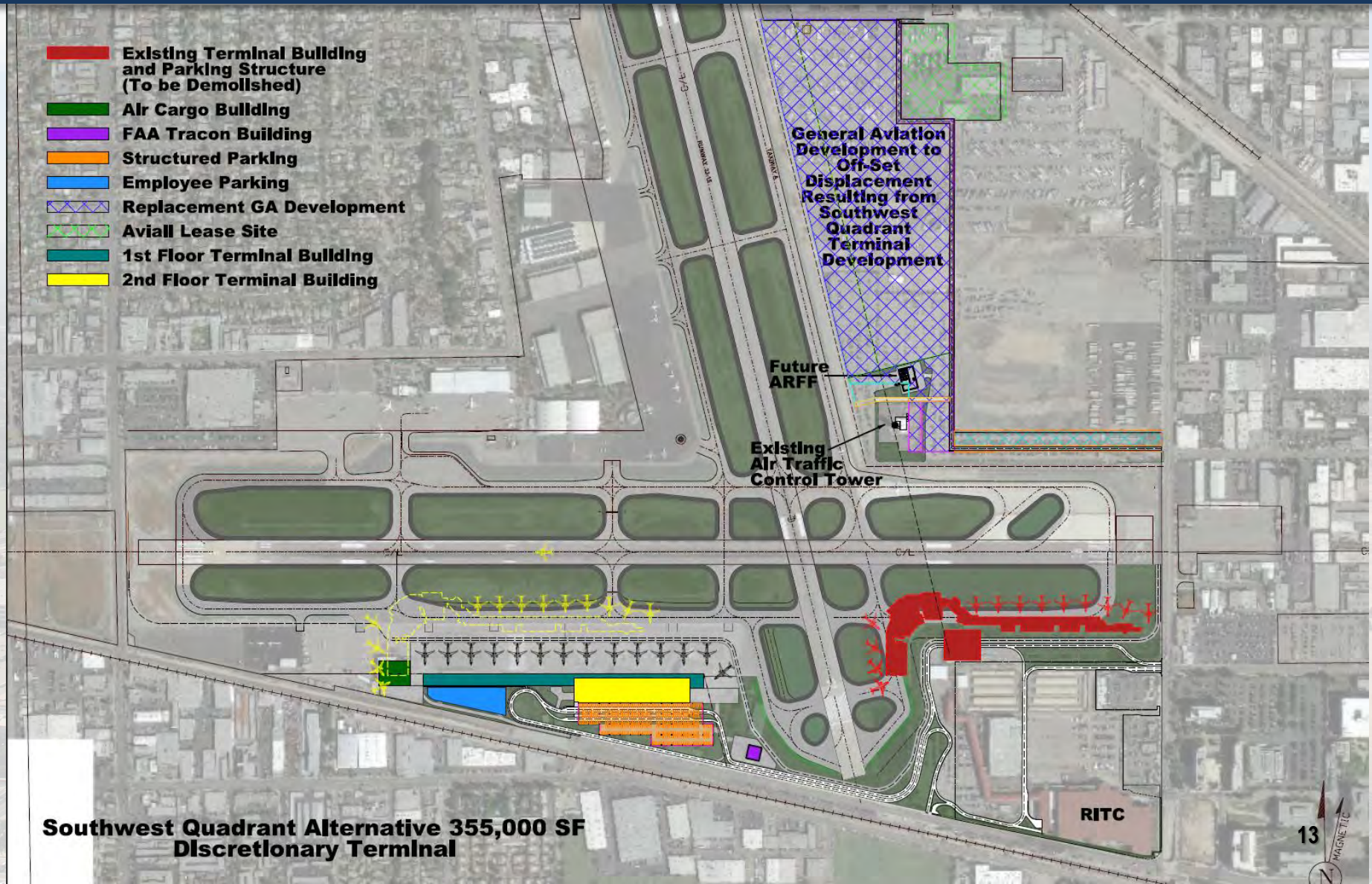
Build Alternatives

1. **Preferred B-6 Alternative on Hollywood Way Site:**
355,000-square-foot discretionary terminal on B-6 Site
2. **Potential SWQ Alternative on Empire Avenue Site:**
355,000-square-foot discretionary terminal on Southwest Quadrant (“SWQ”) with approval to build general aviation on B-6 Hollywood Way Site, to offset general aviation displaced by terminal development
3. **Same-Size SWQ Alternative on Empire Avenue Site:**
232,233-square-foot ministerial terminal on SWQ with no new development on B-6 Hollywood Way Site

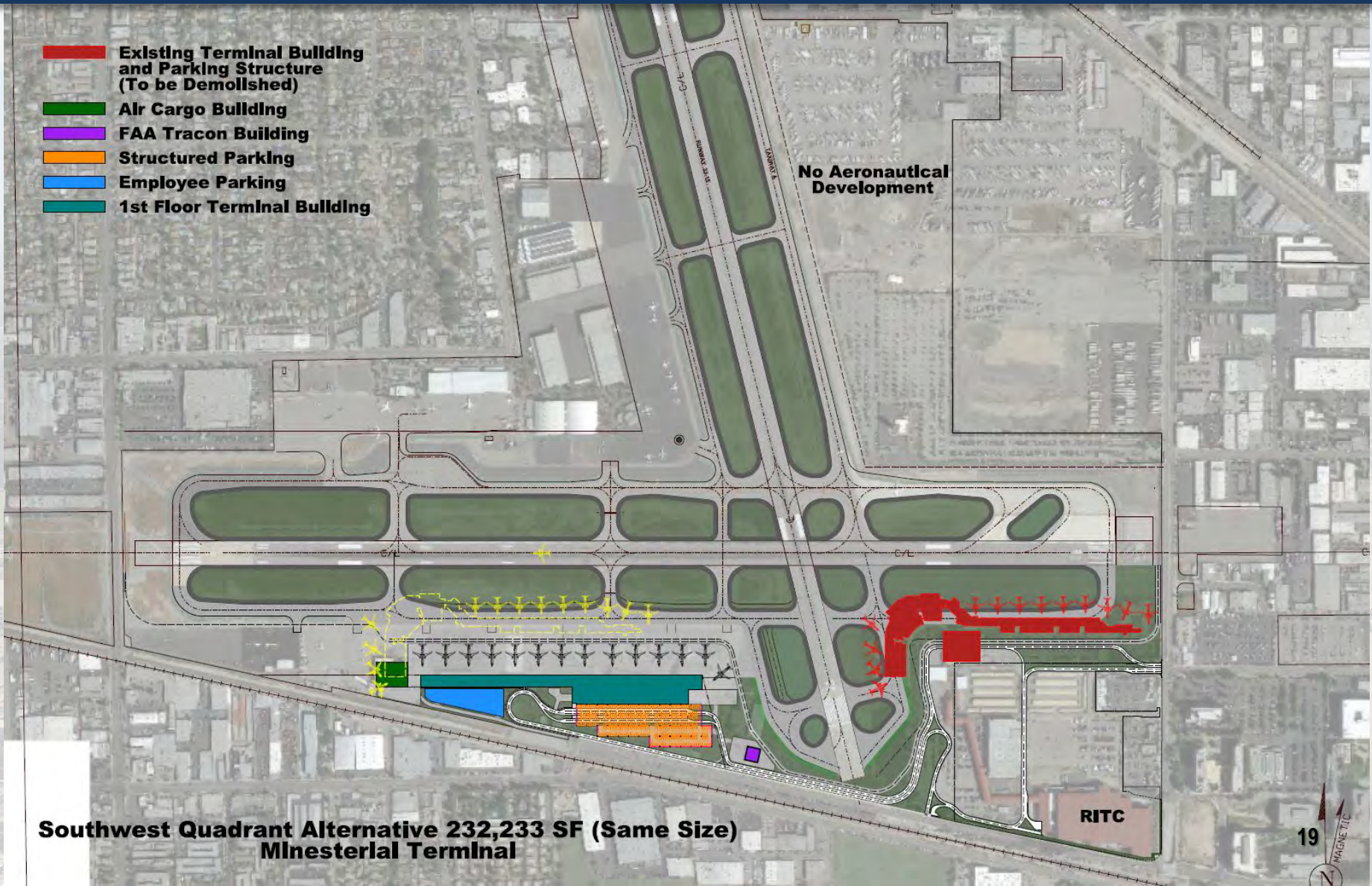
Preferred Location: Hollywood Way Site




Potential SWQ Alternative: Empire Ave



Same-Size SWQ Alternative: Empire Ave



Schedule

- 
- **Publication of Draft EIR** **April 29, 2016**
 - **Publication of Final EIR** **July 2016**
 - **Certification of Final EIR** **July 2016**
 - **Approval by Burbank City Council** **August 2016**
 - **Measure B Vote – General Election** **Nov. 8, 2016**

Measure B

Before the City of Burbank can formally approve any agreement with the Airport Authority for a Replacement Terminal, or any other discretionary act relating to the approval of a Replacement Terminal, a majority of Burbank votes must approve the proposed agreement first.

For More Information

- www.BURreplacementterminal.com
 - Information includes ability to subscribe to the Airport's monthly online newsletter
- Facebook: facebook.com/bobhopeairport
- Twitter: @fly_BUR, #replaceBURterminal
- Instagram: @fly_BUR, #replaceBURterminal
- www.BurbankCA.gov/BURinfo